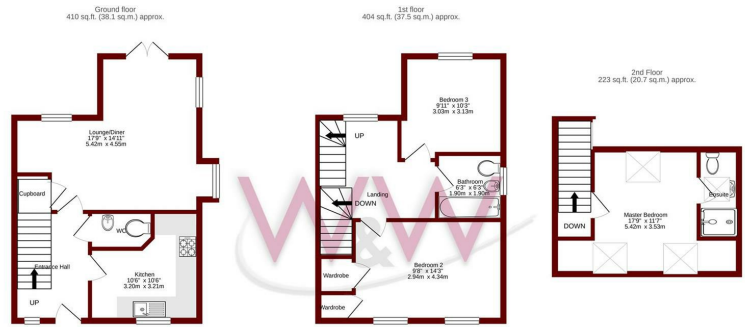




Camellia Way | | Whiteley | PO15 7NS

**£1,550 PCM**





TOTAL FLOOR AREA: 1037 sq ft (96.4 sq.m) approx.  
 Whilst every attempt has been made to ensure the accuracy of the figures contained here, measurements of doors, windows, rooms and any other items are approximate and no responsibility is taken for any error, omission or misstatement. This plan is for illustrative purposes only and should be used as such by any prospective purchaser. The services, systems and appliances shown have not been tested and no guarantee is given as to their operability or efficiency can be given.  
 Made with Metropix ©2020



Energy Efficiency Rating		Current	Potential
Very energy efficient - lower running costs			
(92 plus)	A		88
(81-91)	B		
(69-80)	C		77
(55-68)	D		
(39-54)	E		
(21-38)	F		
(1-20)	G		
Not energy efficient - higher running costs			
England & Wales		EU Directive 2002/91/EC	



## Description

W&W are delighted to offer for rent this extended & extremely well presented three bedroom semi detached house. The property boasts 'L' shaped lounge, modern kitchen, downstairs cloakroom, family bathroom, three double bedrooms with the master bedroom spanning the top floor in an impressive loft conversion with modern en-suite double shower room. The property also benefits from a rear low maintenance garden & allocated parking. Available early July 2026

## Key features

- 3 Bedroom House
- Modern Kitchen
- Low maintenance garden
- Ensuite
- Available Early July 2026
- Loft Conversion
- Lounge Diner
- Allocated Parking
- Cloakroom



H3 Whiteley Shopping Centre  
 Whiteley Way  
 Whiteley  
 Hants  
 PO15 7PD  
 01489 580800  
 pm@walkerwaterer.co.uk  
 www.walkerwaterer.co.uk