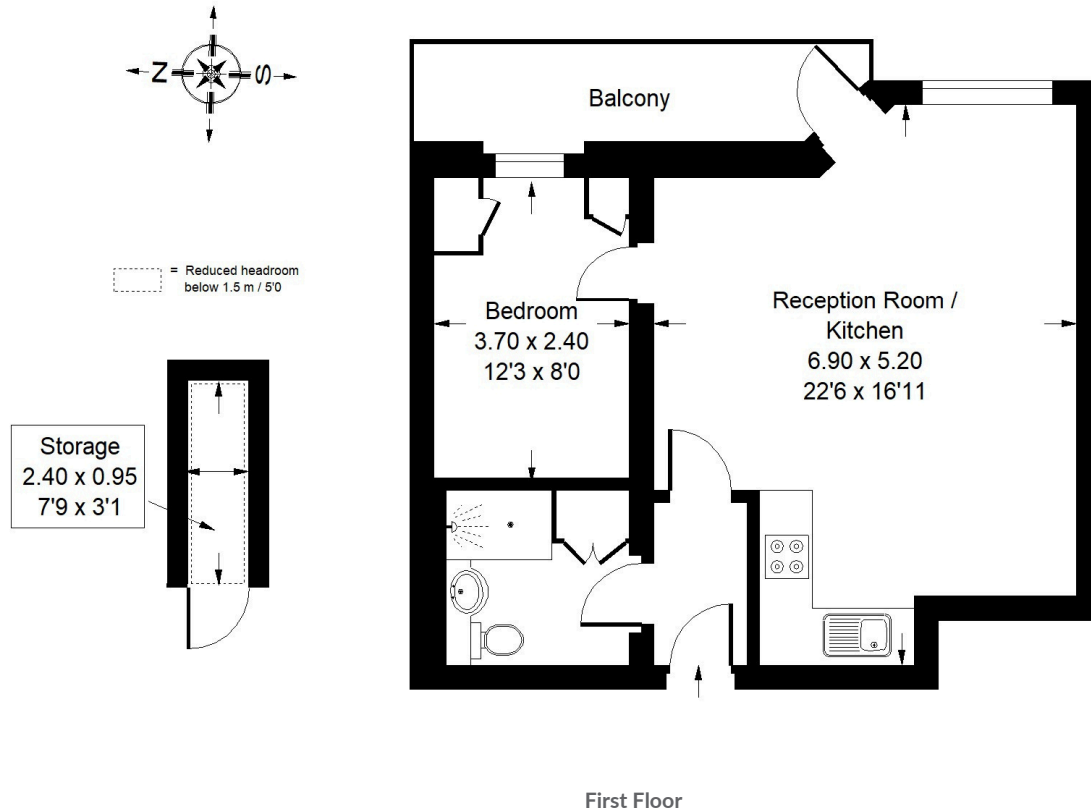




SHERBORNE COURT, CROMWELL ROAD, SW5

Approx. Gross Internal Area
= 49.8 sq m / 536 sq ft



Cromwell Road, SW5 - Leasehold

Local Authority - Royal Borough of Kensington & Chelsea

A well located first-floor apartment, with lift access, set within a portered building in the heart of Kensington. The apartment features wooden flooring throughout, with a bright open-plan kitchen, spacious reception room opening out onto the private balcony and a separate storage room. There is a good sized double bedroom and modern shower room. Sherborne Court is opposite Cromwell Hospital and a short stroll from both Gloucester Road, Earls Court and High Street Kensington underground stations, while the excellent array of shops, restaurants, and amenities along High Street Kensington are also within easy reach.

- Private Balcony
- Excellent Transport Links
- Portered Building
- EPC Rating = C
- Extended Lease
- Council Tax Band = D



Whilst every attempt has been made to ensure the accuracy of the floor plan, measurements are approximate and not to scale. No guarantee is given on the total square footage of the property quoted on the plan. Figures given are for guidance. Plan is for illustration purposes only, not to be used for valuations.