



11 Minehead Close  
Corby, NN18 0BU



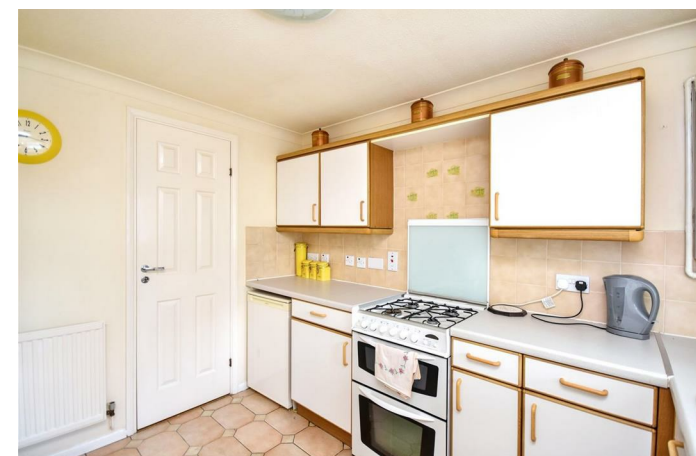
**Simpson West**

Occupying a desirable corner plot within this sought after cul-de-sac and being sold with NO ONWARD CHAIN, this well-presented semi detached bungalow is offered exclusively to buyers aged 55 and over. The property boasts a substantial rear garden and a wrap around plot, providing excellent outdoor space and privacy. Accommodation includes a welcoming reception hall, a spacious living room, a fitted kitchen, two bedrooms, and a modern, fully tiled shower room. Externally, the property features a large garden mainly laid to lawn with mature shrubbery and a large west facing patio area, along with a private driveway offering off-road parking for one vehicle and a low maintenance front garden. An early viewing is highly recommended to fully appreciate both the setting and the generous outdoor space this home has to offer. Energy Rating: C | Council Tax Band: B

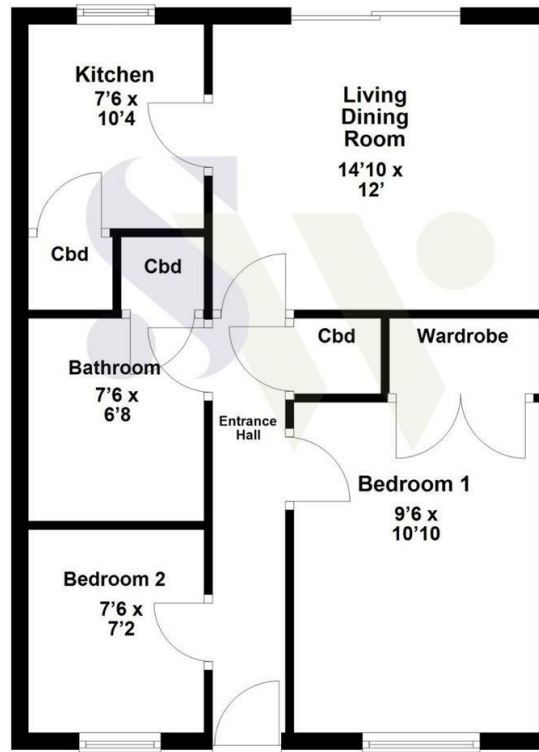


£195,000

2 1 1



## Ground Floor



### Energy Efficiency Rating

	Current	Potential
<i>Very energy efficient - lower running costs</i>		
(92 plus) <b>A</b>		
(81-91) <b>B</b>		
(69-80) <b>C</b>		
(55-68) <b>D</b>		
(39-54) <b>E</b>		
(21-38) <b>F</b>		
(1-20) <b>G</b>		
<i>Not energy efficient - higher running costs</i>		
<b>England &amp; Wales</b>	EU Directive 2002/91/EC	



When you buy with Simpson West, you know **you'll be in safe hands**. From the moment you walk through our doors, we'll make you **feel truly welcome**. Our sales consultants and financial advisors will take you through **every step of the process**, offering **free expert advice** along the way, from help choosing the right mortgage and insurance through to finding your conveyancer. And if you need help selling your home too, **with over 20 years of local experience, you can trust us to get you moving**.



**Simpson  
West**

Making Every  
Journey Personal



01536 202007

[info@simpsonwest.co.uk](mailto:info@simpsonwest.co.uk)

<https://www.simpsonwest.co.uk/>

64 Corporation Street, Corby, Northants, NN17 1NH