

HS HAIR & SON

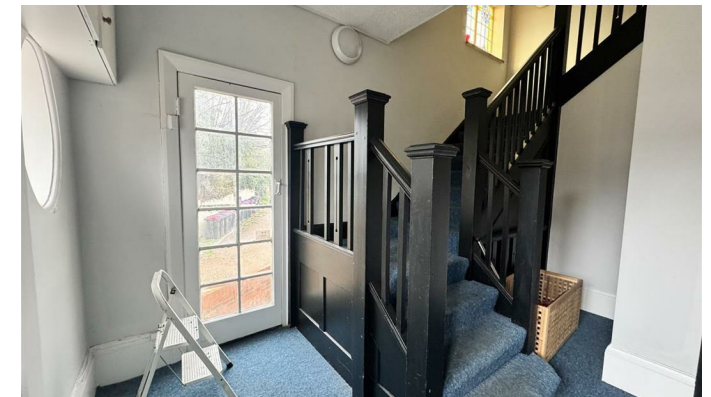


Toledo Road , Southend-on-Sea SS1 2DW

- TWO BEDROOMS
- OFF ROAD PARKING
- WALKING DISTANCE TO SOUTHEND CITY CENTRE
- CORNER PROPERTY BETWEEN TOLEDO ROAD AND QUEBEC AVENUE
- 160 YEAR LEASE
- TOP FLOOR FLAT
- LOW YEARLY CHARGES
- PERFECT FOR INVESTORS OR FIRST TIME BUYERS
- NO ONWARD CHAIN
- CLOSE TO SOUTHEND SEAFRONT

Guide Price £160,000 Leasehold

Local Authority **Southend on Sea Borough Council**
Council Tax Band **A**
EPC Rating **D**



Sales Office
190 London Road, Southend-On-Sea,
Essex, SS1 1PJ

Contact
01702 34 11 77
<https://hairandson.co.uk/>

Agents Note: Whilst every care has been taken to prepare these particulars, they are for guidance purposes only. All measurements are approximate and for general guidance purposes only and whilst every care has been taken to ensure accuracy, they should not be relied upon and potential buyers/tenants are advised to recheck the measurements.