



OVER 60?

Secure this property
for up to **59% less!**

Guide Price

£400,000

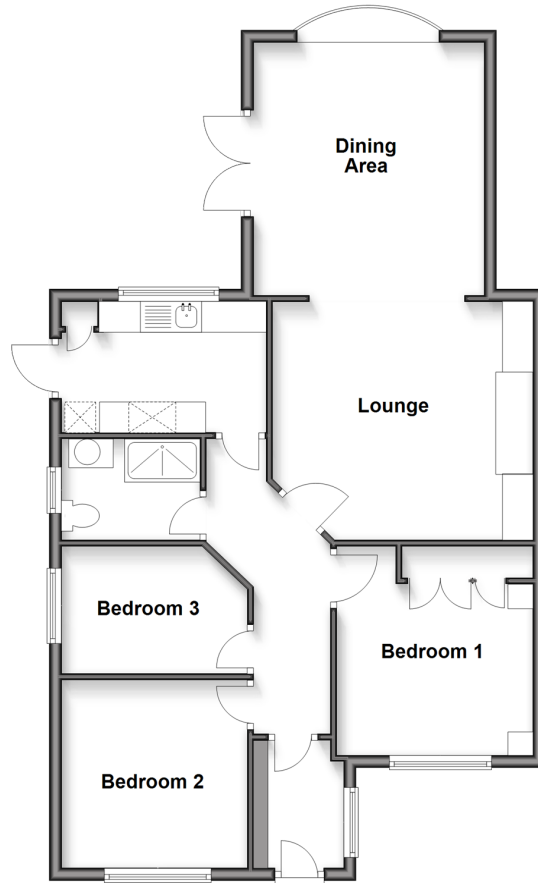
Freehold

3x  1x  1x 

**Vauxhall Crescent,
Snodland, Kent, ME6**

Wards
Helping you move forwards

Ground Floor
Approx. 81.2 sq. metres (873.8 sq. feet)



Accommodation

GROUND FLOOR

Entrance Hall

Lounge: 13'11 x 12'0 (4.24m x 3.66m)

Dining Area: 12'8 x 12'2 (3.86m x 3.71m)

Kitchen: 10'1 x 7'0 (3.08m x 2.14m)

Shower Room

Bedroom 1: 10'9 x 10'4 (3.28m x 3.15m)

Bedroom 2: 9'11 x 9'10 (3.02m x 3.00m)

Bedroom 3: 9'10 x 6'8 (3.00m x 2.03m)

OUT BUILDING

Outbuilding 1: 16'4 x 6'7 (4.98m x 2.01m)

Outbuilding 2: 14'8 x 8'10 (4.47m x 2.69m)

Outbuilding 3: 12'2 x 9'6 (3.71m x 2.90m)

Outbuilding 4 - Garage

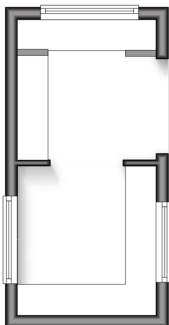
OUTSIDE

Off-Road Parking

Front and Rear Gardens

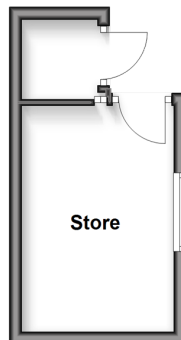
Outbuilding 1

Approx. 11.1 sq. metres (119.7 sq. feet)



Outbuilding 2

Approx. 10.9 sq. metres (116.8 sq. feet)



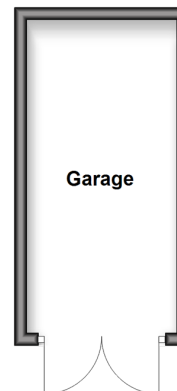
Outbuilding 3

Approx. 6.8 sq. metres (72.8 sq. feet)



Outbuilding 4

Approx. 12.4 sq. metres (133.7 sq. feet)





Main features

- Handy garage and ample parking
- Ready to move straight into as it's immaculate
- Tranquil garden to enjoy all year round for all occasions - must be seen to appreciate the 'wow factor'
- Desirable and peaceful location which doesn't often become available
- Potential to extend (STPP) - perfect for making it a future family home



Nearest Schools

Primary Schools: St Katherine's School 0.7 miles, Valley Invicta Primary 1.0 miles, Snodland CofE Primary 1.1 miles. Secondary Schools: Holmesdale Technology College 0.5 miles, Grange Park School 2.0 miles, Aylesford School - Sports College 3.7 miles



Transport Information

Train Stations: Snodland 1.5 miles, New Hythe 2.1 miles, East Malling 2.3 miles



Address

Vauxhall Crescent, Snodland, Kent, ME6



Directions

For directions to this property please contact us.



Wards
Helping you move forwards

Call Snodland Branch 01634 245055 ■ wardsofkent.co.uk



- Legal advice should be taken to verify fixtures/fittings, planning, alterations and/or lease details
- Appliances & services are untested, dimensions are approximate and floor plans are not to scale
- Through a Homewise Home For Life Plan people aged 60+ can secure this property for up to 50% less, by purchasing a Lifetime Lease.



13821716/20250924/LK/MM