



Guide Price
£280,000

Freehold

3x  2x  1x 

**Louisville Avenue,
Gillingham, Kent, ME7**

OVER 60?

Secure this property
for up to **59% less!**

Wards
Helping you move forwards



Main features

- Older style terraced house with downstairs bathroom and en-suite shower room
- Immaculately presented
- Gas central heating and double glazing
- Ideal first time buy or family home
- Walking distance of Gillingham High Street and main line station

Accommodation

GROUND FLOOR

Porch

Lounge: 13'2 into bay x 12'5 (4.02m x 3.79m)

Dining Area: 12'5 x 10'5 (3.79m x 3.18m)

Kitchen : 12'4 x 6'8 (3.76m x 2.03m)

Bathroom

FIRST FLOOR

Landing

Bedroom 1: 13'1 x 11'0 (3.99m x 3.36m)

Bedroom 2: 12'5 x 8'4 (3.79m x 2.54m)

Bedroom 3: 8'2 x 7'8 (2.49m x 2.34m)

En-suite Shower Room

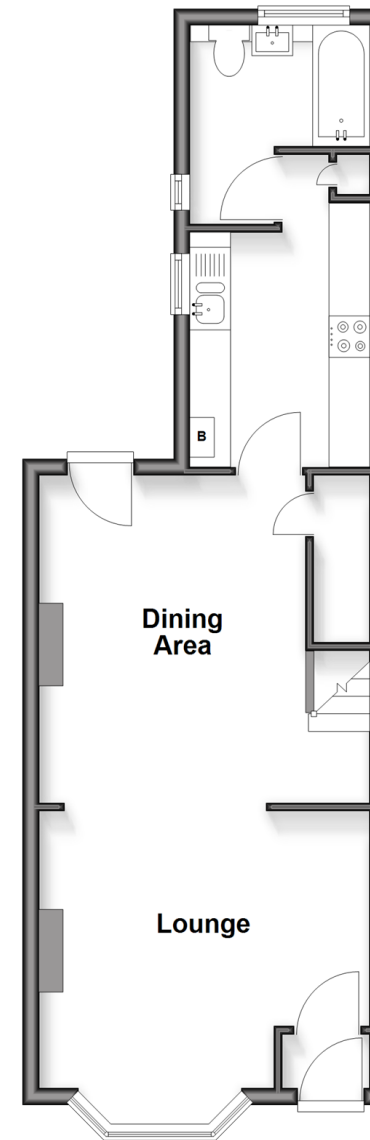
OUTSIDE

Front Garden

Rear Garden

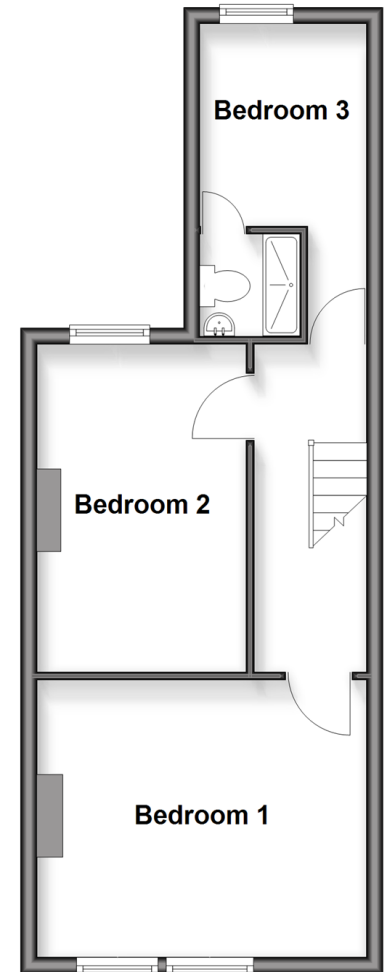
Ground Floor

Approx. 42.3 sq. metres (455.8 sq. feet)



First Floor

Approx. 38.1 sq. metres (409.6 sq. feet)



Call Gillingham - 01634 851191 ■ wardsofkent.co.uk

- Legal advice should be taken to verify fixtures/fittings, planning, alterations and/or lease details
- Appliances & services are untested, dimensions are approximate and floor plans are not to scale
- Through a Homewise Home For Life Plan people aged 60+ can secure this property for up to 50% less, by purchasing a Lifetime Lease.



11022384/20251016/NS/GS