



📍 6 Springfield Road, Rowde, Wiltshire, SN10 2NX

🏠 Guide Price £237,500

An immaculately well presented and competitively priced 3 bedroom village family home, with gardens to front and rear and the added benefit of a garage.

- Well Proportioned Terraced Family Home
- Popular Village With Amenities
- Tastefully Modernised & Redecorated
- 3 Bedrooms
- Stylish Contemporary Kitchen
- Extended Dining Area
- Light Sitting Room
- Refitted Family Bathroom
- Low Maintenance Courtyard Gardens Front & Rear
- Single Garage In A Block & Parking

🏡 Freehold

🏠 EPC Rating D



Located in the highly regarded village of Rowde, just outside Devizes, this beautifully presented and significantly improved three-bedroom family home offers exceptional value for families, first-time buyers, and downsizers alike. Tastefully redecorated throughout, the property is ready to move straight in and further benefits from a single garage.

The property would also make an ideal buy to let, with little work required in readiness for letting out and has a potential estimated rental of £1250 pcm.

Internally, a light and spacious sitting room with a large picture window and ornamental fireplace, opens through to a refitted kitchen with marble effect worktops, tiled flooring, and a built in oven with 4 ring electric hob over. The kitchen is open plan into an extended dining area with doors out to the rear garden. On the first floor, there are 3 bedrooms (2 doubles and a single), plus a modern refitted family bathroom with tiled walls and a bath with a shower over and glass screen.

Outside, the house enjoys courtyard gardens to both the front and rear, ideal for al fresco eating and entertaining. There is a garage in a block to the rear with an allocated parking space in front of the garage.

Situation

A very popular Wiltshire village on the edge of the market town of Devizes, which provides an excellent public house/restaurant called The George and Dragon specialising in Seafood, a newly opened village store, a popular primary school and St Matthews church. There is a bus stop just around the corner with good services back into town. Devizes town centre is only a few minutes away by car and offers a comprehensive range of shopping, transport and leisure facilities including a swimming pool, schools for all ages, a theatre, museum and thriving weekly market. The major centres of Chippenham, Salisbury, Swindon, Marlborough and Bath are all within a 25 mile radius.

Property Information

Council Tax: Band B

Services: All mains services including gas fired central heating are connected at the property.



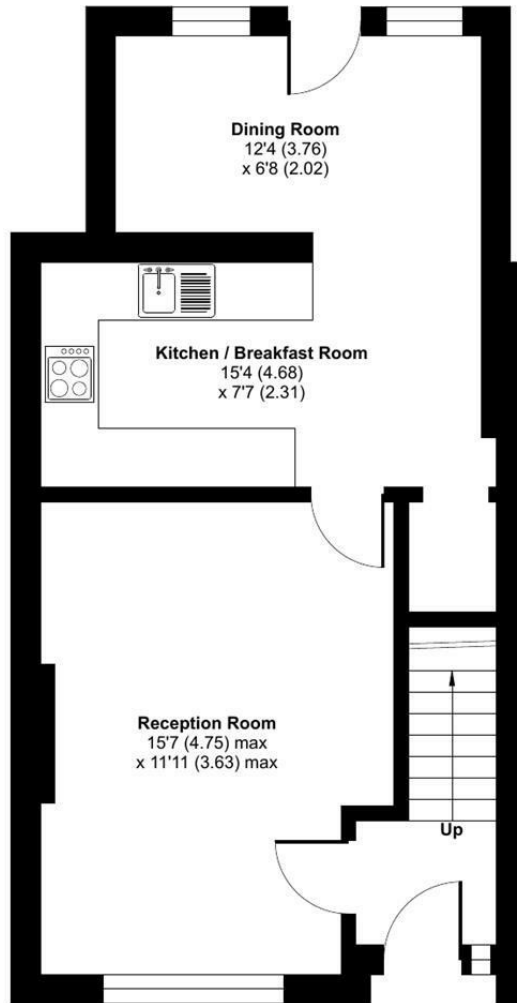
Springfield Road, Rowde, Devizes, SN10

Approximate Area = 825 sq ft / 76.6 sq m

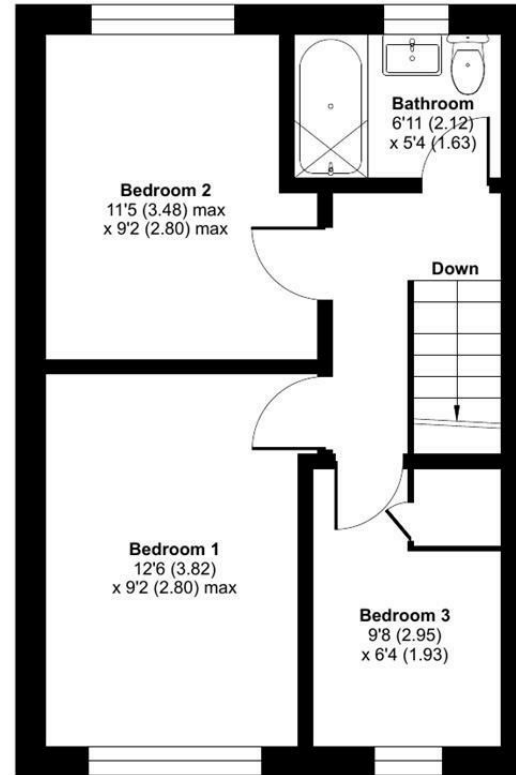
Garage = 128 sq ft / 11.8 sq m

Total = 953 sq ft / 88.4 sq m

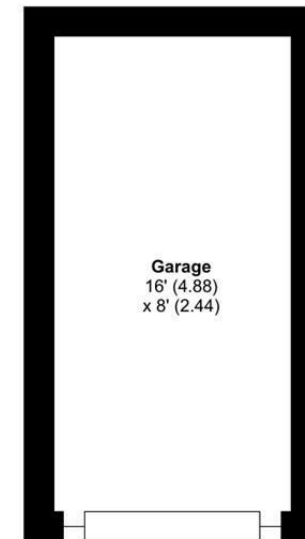
For identification only - Not to scale



GROUND FLOOR



FIRST FLOOR



GARAGE

 Floor plan produced in accordance with RICS Property Measurement 2nd Edition, Incorporating International Property Measurement Standards (IPMS2 Residential). © ntechcom 2026. Produced for Strakers. REF: 1458957

Disclaimer These particulars, whilst believed to be accurate are set out as a general outline only for guidance and do not constitute any part of an offer or contract. Intending purchasers should not rely on them as statements of representation of fact, but must satisfy themselves by inspection or otherwise as to their accuracy. No person in this firm's employment has the authority to make or give any representation or warranty in respect of the property. All measurements and distances are approximate only. Your home is at risk if you do not keep up repayments on a mortgage or other loan secured on it.