

Conway Street

London • • W1T 6BF
Per Month: £2,500 Per Month



coopers
est 1986

Conway Street

London • • W1T 6BF

A charming and surprisingly bright basement garden flat set within an attractive period building on this quiet residential street in the heart of Fitzrovia.

This well-proportioned one-bedroom garden-level apartment benefits from direct access to a private rear garden – a rare and valuable feature in central London – providing excellent outdoor space for relaxing, dining or working from home.

AVAILABLE EARLY MARCH

ONE BEDROOM

GARDEN FLAT

HEART OF FITZROVIA

FURNISHED

EPC - TBC

These particulars are intended as a guide and must not be relied upon as statements of fact. Your attention is drawn to the Important Notice on the last page.







Schools:

A charming and surprisingly bright basement garden flat set within an attractive period building on this quiet residential street in the heart of



Train:

A charming and surprisingly bright basement garden flat set within an attractive period building on this quiet residential street in the heart of



Car:

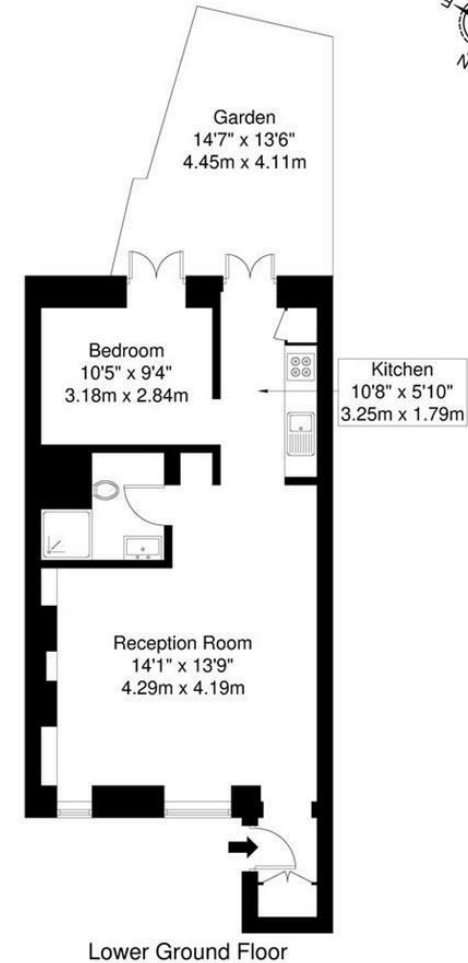
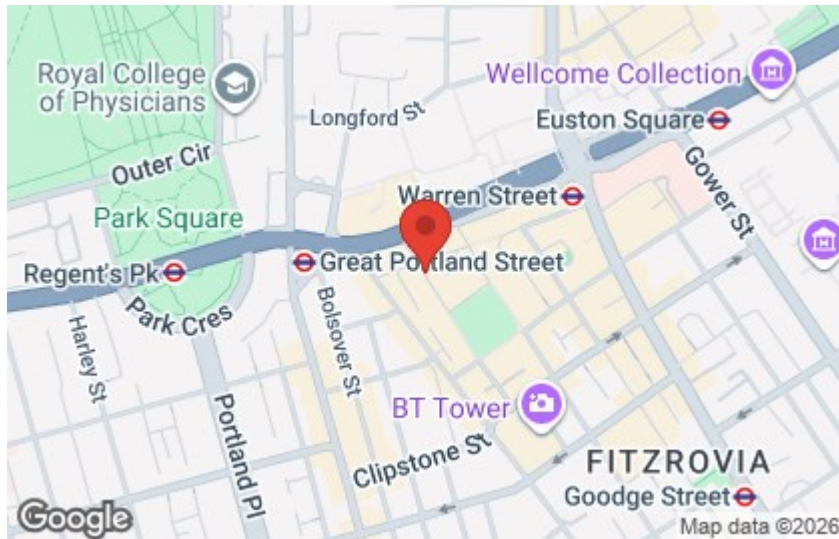
M4, A40, M25, M40



Council Tax Band:

D

(Distances are straight line measurements from centre of postcode)



Conway Street, W1T

Total Gross Internal Area = 51.3 sq m / 552 sq ft

All Measurements are approximate and for identification guideline purposes only, not to scale.
Compliant with the RICS code of measuring practice

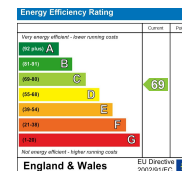
coopers
est 1986

0207 580 9658

22 Cleveland Street, Fitzrovia,
London, W1T 4JB

info@coopersonlondon.co.uk

CoopersResidential.co.uk



Important Notice: These particulars, whilst believed to be accurate are set out as a general outline only for guidance and do not constitute any part of an offer or contract. Intending purchasers should not rely on them as statements or representation of fact, but must satisfy themselves by inspection or otherwise has the authority to make or give any representation or warranty in respect of the property.