

Directions

Viewings

Viewings by arrangement only. Call 02033696888 to make an appointment.

EPC Rating

B

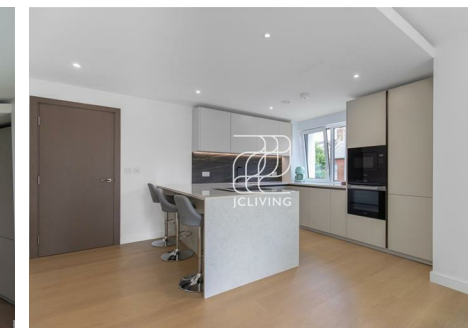
Energy Efficiency Rating		
	Current	Potential
Very energy efficient - lower running costs		
(92 plus) A		
(81-91) B	87	87
(69-80) C		
(55-68) D		
(39-54) E		
(21-38) F		
(1-20) G		
Not energy efficient - higher running costs		
England & Wales		
EU Directive 2002/91/EC		

2 Bedroom apartment

APARTMENTS: 520 & 547

FLOORS: 1 & 2

TOTAL AREA	80.3 SQM	864.3 SQFT
Kitchen	3.30m x 4.68m	10' 10" x 15' 4"
Living / Dining	3.63m x 5.83m	11' 11" x 19' 2"
Bedroom 1	3.00m x 3.00m	9' 10" x 9' 10"
Bedroom 2	2.66m x 2.84m	8' 9" x 9' 4"
Balcony	2.2 sqm	23.7sqft



CN860 Flat 19, Morris Court Tierney Lane, London, W6 9YL

£923 Per Week



Morris Court Tierney Lane, London W6 9YL

*** Please quote reference number JC23068 when contacting the office ***

Stunning Two-Bedroom, Two-Bathroom Apartment in Fulham Reach, W6

A beautifully presented two-bedroom, two-bathroom apartment set within the prestigious Fulham Reach development, offering contemporary riverside living in one of West London’s most desirable locations.

The apartment features a spacious open-plan reception and kitchen, finished to a high standard with integrated appliances and ample storage. Both bedrooms are generously sized, with the principal bedroom benefiting from an en-suite bathroom, while the second bathroom is finished in a modern, elegant style.

Additional benefits include floor-to-ceiling windows, excellent natural light, comfort cooling, and high-quality fixtures throughout. Residents enjoy access to 24-hour concierge services, landscaped communal areas, and

 2

 2

 1

 B

Council Tax Band: F

