



## Old Castle Street, E1 £450,000

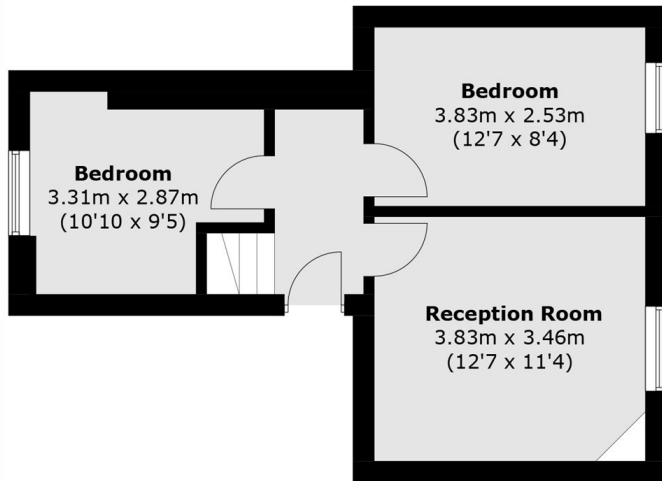
A well-presented two-bedroom apartment located in the Victorian mansion block, Arcadia Court. The apartment comprises two bedrooms and a spacious living room. Located on the top floor is a contemporary bathroom, the modern kitchen with fitted appliances and access to the terrace. Residents also have access to the communal courtyard.

Arcadia Court is located a half mile from the City of London and under half a mile from Aldgate Station and Liverpool Street, with access to Hammersmith & City, Central Line, Overground Lines and National Rail services, including the Stansted Express. Spitalfields Market is just over a quarter of a mile away, where you will find local food markets, shops and restaurants.

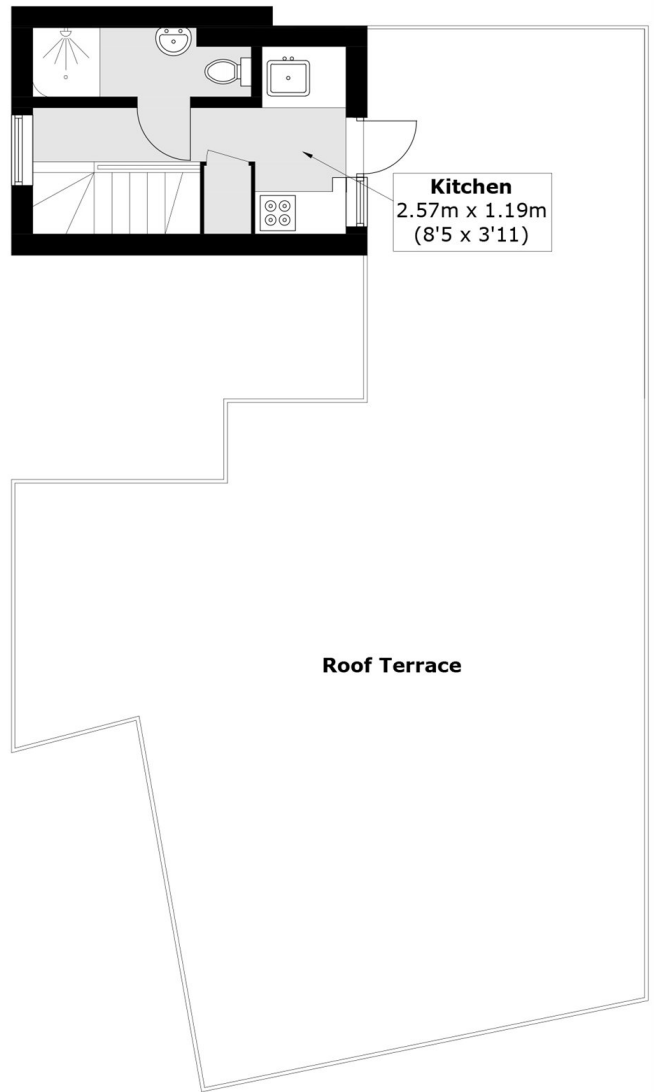
### Features

- Two bedrooms
- Mansion block
- Central location
- Communal courtyard
- Great transport links
- 0.5 Miles From City of London

Old Castle Street,  
London, E1



**Fourth Floor**



**Fifth Floor**

Total area (approx.): 50.3 sq. m (541.4 sq. ft)  
Roof Terrace (approx.): 88.3 sq. m (950.5 sq. ft)