

## Greenwich High Road, SE10

£475,000

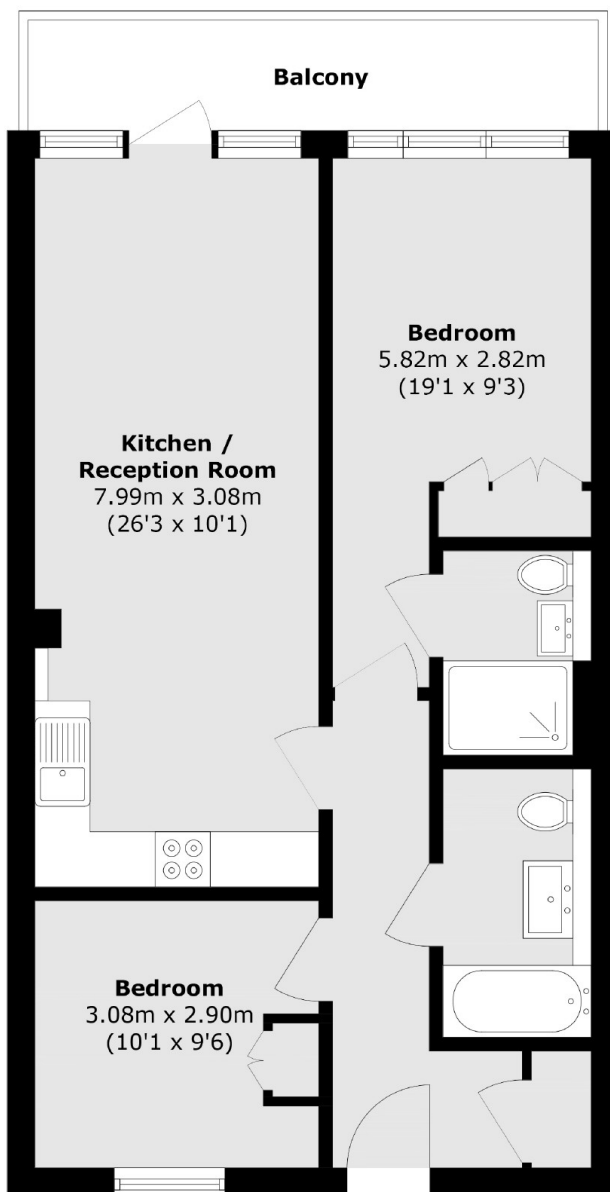
A well presented and spacious two double bedroom apartment located within a secure and highly sought after building due to its great location. The property showcases a large open plan living space with a private balcony, two good sized bedrooms, ample storage and further benefits from modern interior. Comes with allocated parking.

Conveniently located at the lower end of Greenwich High Road for all the attractions Royal Greenwich has to offer, moments from both the DLR at Deptford Bridge as well as the DLR and mainline at Greenwich station; giving fast and easy access into both Canary Wharf and the City.

### Features

- Two Bedrooms
- Two Bathrooms
- Second Floor
- Private Balcony
- Large Communal Terrace
- Secure Parking Space

# Greenwich High Road, London, SE10



Total area (approx.): 66.1 sq. m (711.5 sq. ft)

Balcony area (approx.): 7.4 sq. m (79.6 sq. ft)