





£249,950

Located in the popular Old Town area of Hemel Hempstead, this well-presented top floor two-bedroom flat offers spacious accommodation throughout. The property comprises a living room, separate kitchen, two generous bedrooms, with the main bedroom benefiting from an en-suite shower room, as well as a separate family bathroom. Further benefits include allocated parking, and the property is offered to the market chain free. Conveniently situated within easy reach of the amenities, shops and restaurants of the Old Town.

Property Description

Entrance Hall

Door to bathroom, door to bedrooms, door to living room, airing cupboard housing hot water cylinder, storage cupboard, electric radiator.

Lounge

Double glazed window to side and rear aspect, electric radiator, opening to kitchen.

Kitchen

Range of floor and wall mounted units, built in oven, electric hob with extractor fan over, stainless steel sink with drainer, integrated fridge freezer, integrated dishwasher, integrated washing machine, double glazed window to front.

Bathroom

WC, panel bath with shower over, pedestal hand wash basin, heated towel rail.

Bedroom One

Double glazed window to side aspect, electric radiator, door to ensuite.

En-suite

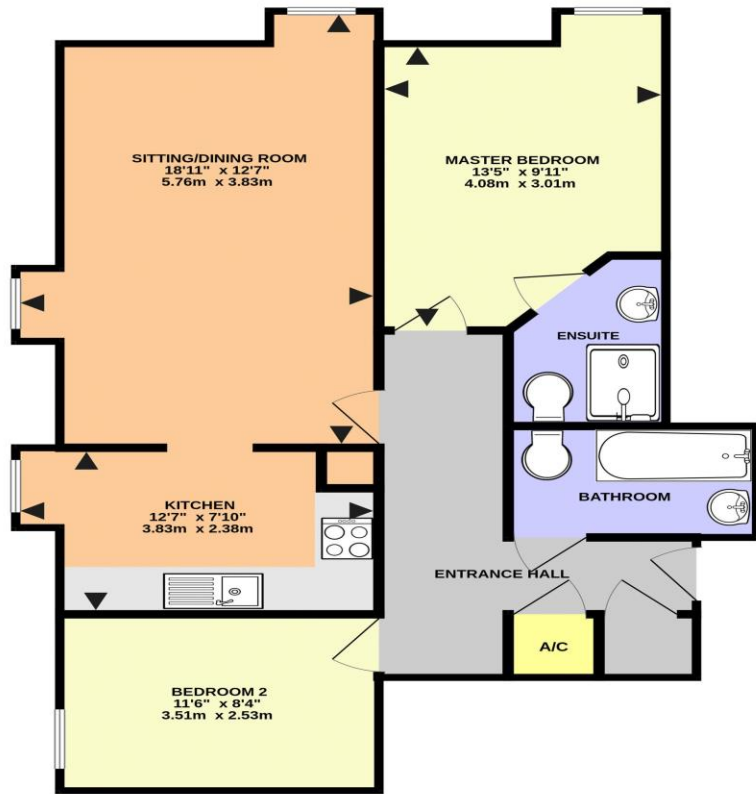
WC, shower cubicle, pedestal hand wash basin, shaver point, extractor fan.

Bedroom 2

Double glazed window to front, electric radiator.

Parking

Allocated parking space.



DAVIDSON HOUSE, HEMEL HEMPSTEAD HP2 5FX (PRODUCED FOR MICHAEL ANTHONY)

TOTAL FLOOR AREA : 725 sq.ft. (67.4 sq.m.) approx.
 No accuracy to this image, text or measurements is guaranteed
 Made with Metropix ©2025

MONEY LAUNDERING REGULATIONS 2017 intending purchasers will be asked to produce identification and proof of financial status when an offer is received. We would ask for your co-operation in order that there will be no delay in agreeing the sale.

THE CONSUMER PROTECTION REGULATIONS 2008 The Agent has not tested any apparatus, equipment, fixtures and fittings or services and so cannot verify that they are in working order or fit for the purpose. A Buyer is advised to obtain verification from their Solicitor or Surveyor. References to the Tenure of a Property are based on information supplied by the Seller. The Agent has not had sight of the title documents. A Buyer is advised to obtain verification from their Solicitor. You are advised to check the availability of this property before travelling any distance to view. We have taken every precaution to ensure that these details are accurate and not misleading. If there is any point which is of particular importance to you, please contact us and we will provide any information you require. This is advisable, particularly if you intend to travel some distance to view the property. The mention of any appliances and services within these details does not imply that they are in full and efficient working order. These particulars are in draft form awaiting Vendors confirmation of their accuracy. These details must therefore be taken as a guide only and approved details should be requested from the agents

33 Marlowes Hemel Hempstead Herts HP1 1LA
 01442 260025 | hemel@maea.co.uk