



## Vermeer Crescent

Guide Price £80,000 to £85,000

- Lounge/Diner
- Family Bathroom
- Kitchen
- Outdoor Storage
- Close to Shops, Schools and Local Amenities
- Good Transport Links
- EPC Rating: C



**Pinkmove**

01633 746088  
team@pinkmove.co.uk



## About the property

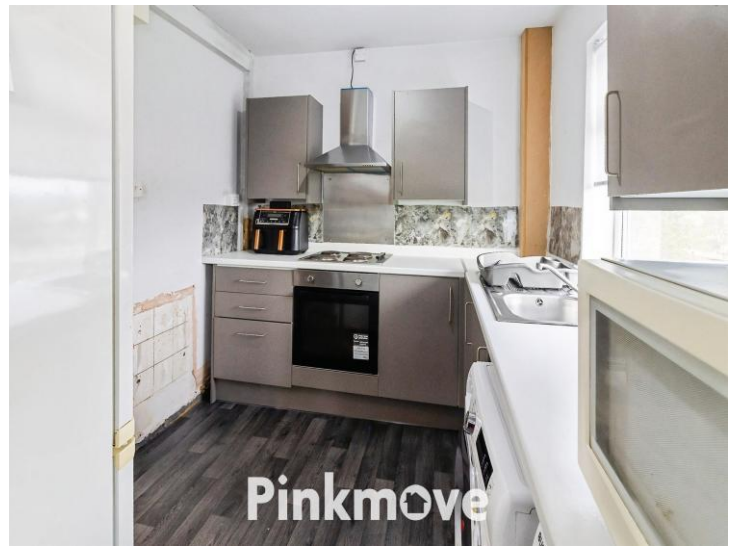
This two-bedroom upper-floor flat on Vermeer Crescent offers adaptable living in a well-connected part of Newport. The property includes a lounge/diner, a functional kitchen, two versatile bedrooms suitable for sleeping, working or additional storage, and a modern family bathroom. Residents also benefit from a communal garden, allocated outdoor storage and on-street parking.

The location provides excellent access to public transport, with nearby bus stops walk away for straightforward travel around Newport and surrounding areas. Newport

Local amenities are close at hand, with the vibrant Newport Market offering a wide variety of food traders, independent stalls and lifestyle units within the city centre. Families will also appreciate convenient access to nearby schools served along local transport routes close by.

With comfortable accommodation, useful outdoor features and excellent proximity to shops, schools and transport links, this flat represents a desirable opportunity in a sought-after Newport neighbourhood.





## Accommodation

### Lounge/Diner

17' 1" x 10' 7" ( 5.21m x 3.23m )  
Max Measurements

### Kitchen

8' 1" x 9' 5" ( 2.46m x 2.87m )

### Bathroom

8' 10" x 6' 6" ( 2.69m x 1.98m )

### Bedroom 1

11' 2" x 12' 10" ( 3.40m x 3.91m )

### Bedroom 2

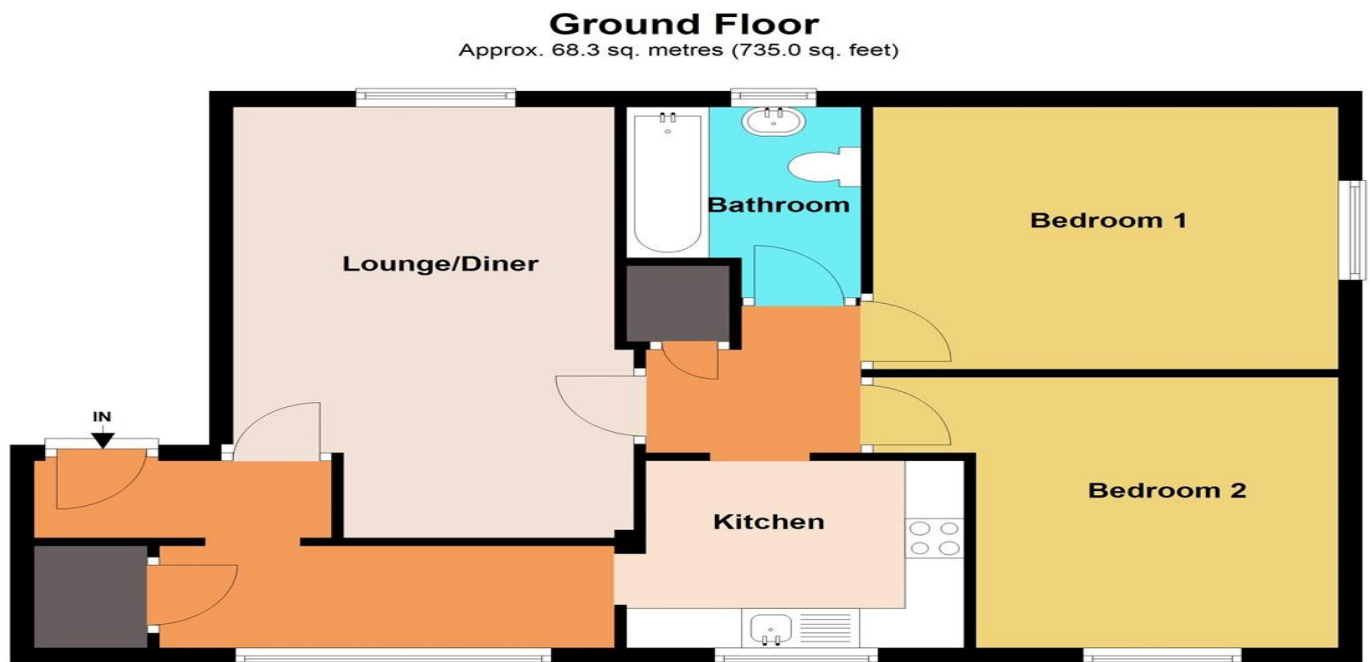
11' x 8' 11" ( 3.35m x 2.72m )

01633 746088

team@pinkmove.co.uk

**Pinkmove**

## Floorplan



Total area: approx. 68.3 sq. metres (735.0 sq. feet)  
**30 Vermeer Crescent**

## Important Information

Note while we endeavour to make our sales details accurate and reliable, if there is any point which is of particular interest to you, please contact the office and we will be pleased to confirm the position for you. We have not personally tested any apparatus, equipment, fixtures, fittings or services and cannot verify they are in working order or fit for their purposes. Nothing in these particulars is intended to indicate that carpets or curtains, furnishings or fittings, electrical goods (whether wired or not). Gas fires or light fittings or any other fixtures not expressly included form part of the property offered for sale. This computer generated Floorplan, if applicable, is intended as a general guide to the layout and design of the property. It is not to scale and should not be relied upon for dimensions. Tenure: We cannot confirm the tenure of the property as we have not had access to the legal documents. The buyer is advised to obtain verification from their solicitor or surveyor.

Peter Alan Limited is registered in England and Wales under company number 2073153, Registered Office is Cumbria House, 16-20 Hockliffe Street, Leighton Buzzard, Bedfordshire, LU7 1GN. VAT Registration Number is 500 2481 05. For activities relating to regulated mortgages and non-investment insurance contracts, Peter Alan Limited is an appointed representative of Connells Limited which is authorised and regulated by the Financial Conduct Authority. Connells Limited's Financial Services Register number is 302221. Most buy-to-let

