



Cavendish Street, Peterborough
Offers in Excess of £160,000 Freehold

**Sharman
Quinney**

Key Features



- Established Semi Detached Home.
- Open Plan Lounge Diner.
- Ground Floor Cloakroom.
- Perfect Starter Home
- 2 Double Bedrooms

Lounge Diner.

Lounge Area 11'10" by 10'3"

Composite front door leading directly into the lounge with open plan staircase to the first floor and landing, UPVC double glazed window to front, radiator, under stairs storage recess area, archway way and ceramic tiled flooring leading into:

Dining Area 15'3" by 10'3"

Ornate fireplace surround with marble inset and half, inset gas coal effect fire, UPVC double glazed window to side, TV point, radiator, further UPVC double glazed window to the rear, fitted storage cupboard and doorway leading through to kitchen.

Kitchen 13' x 5' 6 "

Single drainer sink unit with mixer tap over and tiled splashback's, UPVC double glaze window to



side, range of fitted your base units worksurfaces over, wall mounted double storage cupboard, wall mounted gas boiler, Rita space for freestanding cooker, recess and plumbing for washing machine, twin UPVC double glaze window to side, half glazed door to side. to side lean to/ storage area.

Door leading through to cloakroom.

Cloakroom

Two piece suite with wash handbasin and lead of the sea fully tiled floors and wall.

First Floor and Landing

Loft hatch and doors to the following:

Bedroom 1. 15' maximum x 7'2"

UPVC double glazed window to front, double doors to built-in wardrobe, and radiator.

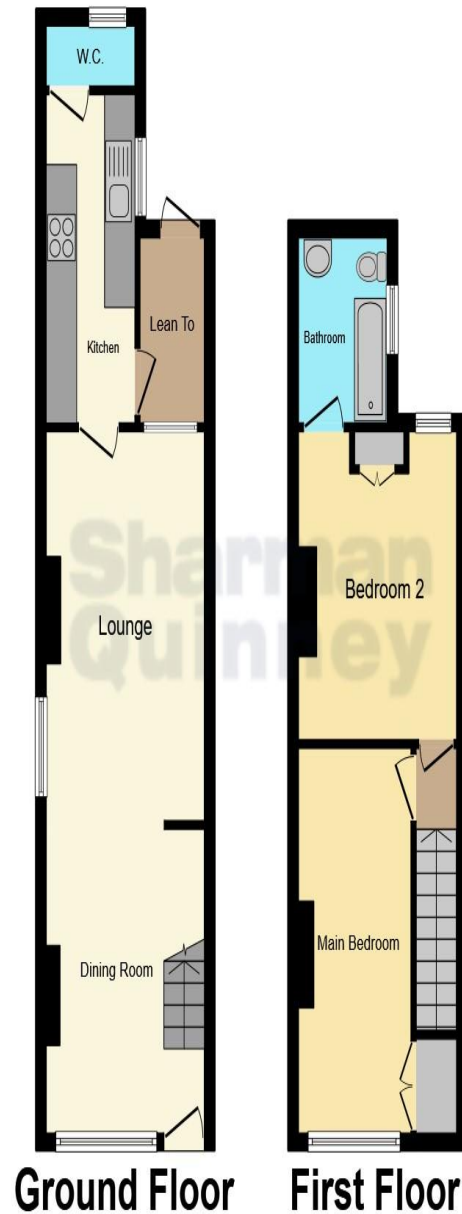
Bedroom 2 12'3" by 10'4"

UPVC double glazed window to rear, fitted double doors to storage cupboard with additional storage cupboards above and below, radiator and door leading through to bathroom.

Bathroom

Three-piece suite comprising of panelled bath with shower screen and mixer taps over, with shower attachment, wash hand basin, low level WC, fully tiled walls, radiator, and UPVC double glazed window to side





Outside
Gated side access.

Rear
Courtyard area immediately leading from the lean to area. There is a shared pedestrian access across the property with one neighbour only. Beyond the shared access there is an enclosed paved patio garden area designed for low maintenance.

To view this property call Sharman Quinney on:
01733 897896

This floor plan is for illustrative purposes only. It is not drawn to scale. Any measurements, floor areas (including any total floor area), openings and orientation are approximate. No details are guaranteed, they cannot be relied upon for any purpose and they do not form part of any agreement. No liability is taken for any error, omission or misstatement. A party must rely upon its own inspection(s). Powered by www.focalagent.com

Selling your property?

Contact us to arrange a **FREE** home valuation.

 01733 897896

 70 Albert Place, PETERBOROUGH,
Cambridgeshire, PE1 1DD

 peterborough@sharmanquinney.co.uk

 www.sharmanquinney.co.uk



 SCAN ME



Sharman Quinney Holdings Limited is registered in England and Wales under company number 4174227, Registered Office is Cumbria House, 16-20 Hockliffe Street, Leighton Buzzard, Bedfordshire, LU7 1GN. VAT Registration Number is 500 2481 05.

1: These particulars do not constitute part or all of an offer or contract. 2: The measurements indicated are supplied for guidance only and as such must be considered incorrect. 3: Potential buyers are advised to recheck the measurements before committing to any expense. 4: Sharman Quinney has not tested any apparatus, equipment, fixtures, fittings or services and it is the buyers interests to check the working condition of any appliances. 5: Sharman Quinney has not sought to verify the legal title of the property and buyers must obtain verification from their legal representative. 6: Intending purchasers will be asked to produce identification documentation at a later stage and we would ask your co-operation in order that there will be no delay in agreeing the sale. Ref: PTB206517 - 0004

