



4, Daintrees, Ware  
SG12 8SL  
£850,000



[stevenoates.com](http://stevenoates.com)





## 4 Daintrees, Widford, Ware, SG12 8SL

A spacious 4 bedroom detached family home located within a private residential development in the heart of the idyllic village of Widford. The light and airy accommodation comprises of a spacious entrance hall with downstairs wc, large living room, dining room and separate kitchen/breakfast room with utility. On the first floor, there are 4 good size bedrooms, a family bathroom and en-suite to the main bedroom. Externally, the property is approached by a gated driveway which includes a large detached double garage, whilst the rear garden enjoys a high degree of privacy.

The property is situated within a small and exclusive development of just 14 detached homes, arranged around a spacious, tree lined square that creates a safe and welcoming environment, ideal for young families.

Located in the charming village of Widford, the area benefits from a strong sense of community and a popular village primary school. Just a short drive away, the larger village of Much Hadham offers additional amenities, including a convenience store, while both Much Hadham and nearby Hunsdon feature a selection of well regarded village pubs.

For a wider range of shopping, dining, and leisure facilities, the market towns of Bishop's Stortford, Ware, and Hertford are all within easy reach. Harlow Town Station, also a short drive away, provides fast and frequent services to London Liverpool Street, making this an excellent location for commuters.

Families are well served by an excellent choice of secondary schools in both Bishop's Stortford and Ware, adding to the appeal of this highly desirable village setting.





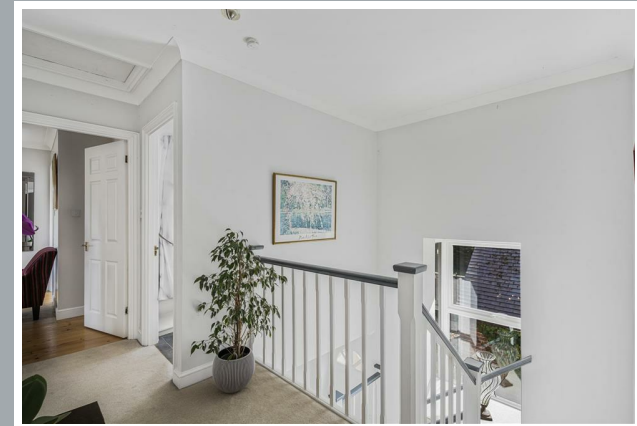
70 Fore Street, Hertford, Hertfordshire, SG14 1BY





70 Fore Street, Hertford, Hertfordshire, SG14 1BY





70 Fore Street, Hertford, Hertfordshire, SG14 1BY









70 Fore Street, Hertford, Hertfordshire, SG14 1BY





70 Fore Street, Hertford, Hertfordshire, SG14 1BY





70 Fore Street, Hertford, Hertfordshire, SG14 1BY









70 Fore Street, Hertford, Hertfordshire, SG14 1BY

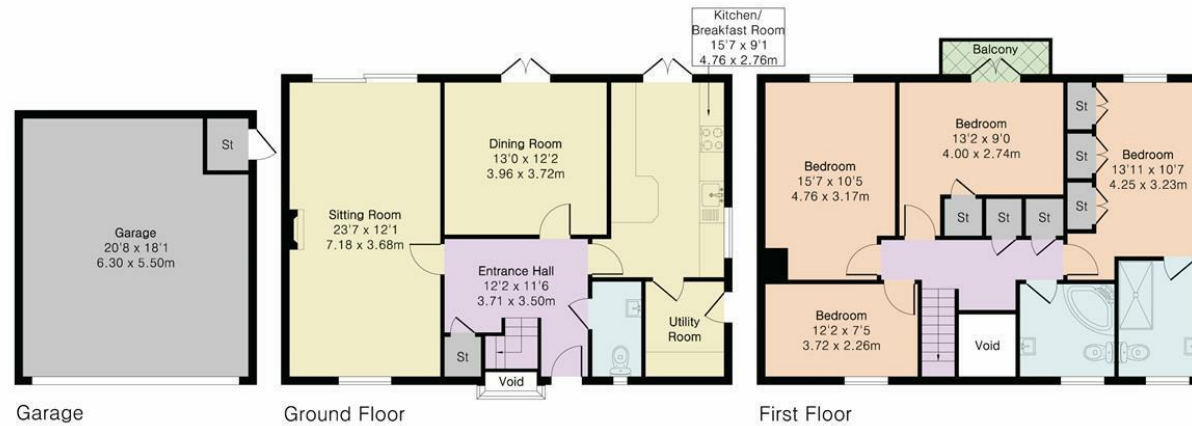


**Approximate Gross Internal Area 1632 sq ft - 152 sq m  
(Excluding Garage)**

Ground Floor Area 816 sq ft – 76 sq m

First Floor Area 816 sq ft – 76 sq m

Garage Area 373 sq ft – 35 sq m



Floor plan produced in accordance with RICS Property Measurement 2nd Edition. Although Pink Plan Ltd ensures the highest level of accuracy, measurements of doors, windows and rooms are approximate and no responsibility is taken for error, omission or misstatement. These plans are for representation purposes only and no guarantee is given on the total square footage of the property within this plan. The figure icon is for initial guidance only and should not be relied on as a basis of valuation.



These particulars, whilst believed to be accurate are set out as a general outline only for guidance and do not constitute any part of an offer or contract. Intending purchasers should not rely on them as statements of representation of fact, but must satisfy themselves by inspection or otherwise as to their accuracy. No person in this firm's employment has the authority to make or give any representation or warranty in respect of the property.



[stevenoates.com](http://stevenoates.com)