



Price
£575,000

Freehold

3x  1x  3x 

**Christopher Road, East
Grinstead, West Sussex,
RH19**

OVER 60?

Secure this property
for up to **59% less!**

cubitt & west
Helping you move forwards



Main features

- Sold with no onward chain
- Generous double bedrooms
- Large driveway and integral garage
- A very spacious 1930's detached house offering scope to update
- Situated in a fantastic location right in the heart of the town centre

Accommodation

GROUND FLOOR

- Entrance Hall
- Cloakroom
- Lounge: 16'2 x 12'11 (4.93m x 3.94m)
- Conservatory: 10'9 x 8'4 (3.28m x 2.54m)
- Dining Room: 12'0 x 11'1 (3.66m x 3.38m)
- Kitchen: 13'6 x 7'9 (4.12m x 2.36m)

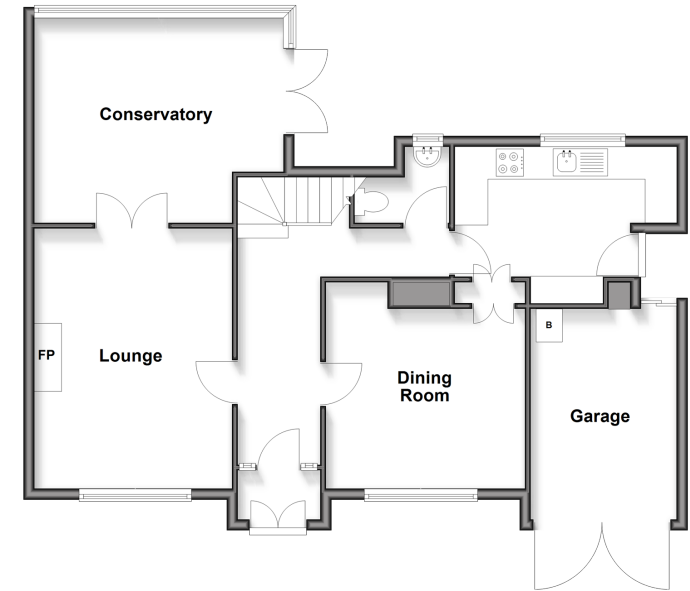
FIRST FLOOR

- Landing
- Bedroom 1: 14'6 x 12'6 (4.42m x 3.81m)
- Bedroom 2: 16'1 x 11'3 (4.91m x 3.43m)
- Bedroom 3: 12'4 x 9'2 (3.76m x 2.80m)
- Bathroom

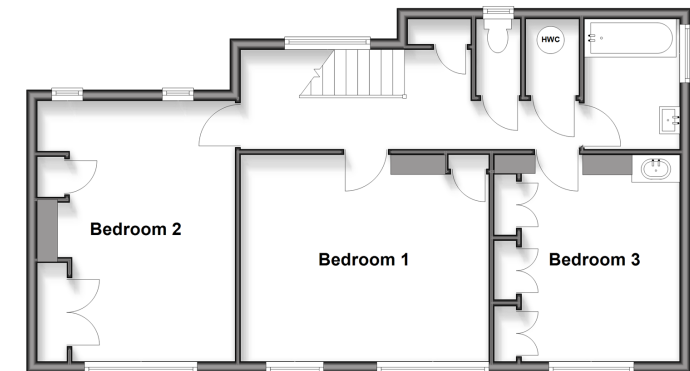
OUTSIDE

- Front & Rear Garden
- Driveway
- Garage

Ground Floor
Approx. 84.4 sq. metres (908.0 sq. feet)



First Floor
Approx. 66.5 sq. metres (716.3 sq. feet)



Call East Grinstead - 01342 314324 ■ cubittandwest.co.uk

- Legal advice should be taken to verify fixtures/fittings, planning, alterations and/or lease details
- Appliances & services are untested, dimensions are approximate and floor plans are not to scale
- Through a Homewise Home For Life Plan people aged 60+ can secure this property for up to 59% less, by purchasing a Lifetime Lease



20614530/20260218/JS/CM