

Cambridge Road, Strood, Rochester, ME2 3HW

Guide Price £260,000 - £280,000

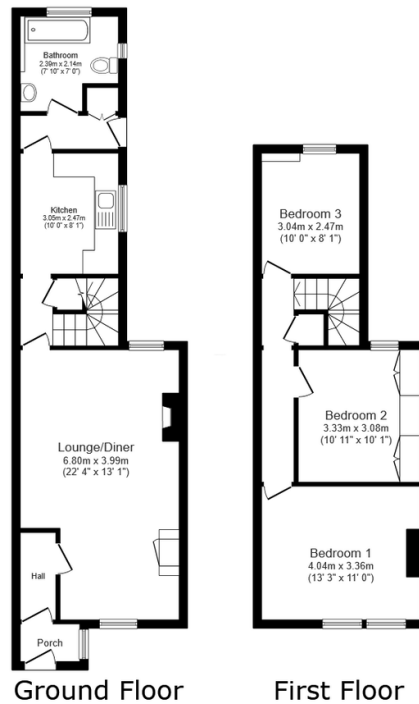
🛏 3 🚗 1 🚗 1



Guide Price £260,000-£280,000 Welcome to Cambridge Road! A home that would make the ideal first time buy, situated on a quiet residential road near to a high speed train link and Strood town center. It offers a blend of spacious rooms that include a lounge dining area and good sized bedrooms with a contemporary kitchen and bathroom. Call to arrange your viewing and quote AP0490

Key Features

- 3 Bedroom End Of Terrace Home
- Contemporary Kitchen & Bathroom
- Ideal First Time Buy
- Near To Motorway links & Train Station
- Tenure Freehold / Council Tax Band B
- Spacious Lounge Dining Room
- Separate Bedrooms
- Low Maintenance Landscaped rear Garden
- Close To Town Centre
- QUOTE AP0490



Total floor area: 88.7 sq.m. (955 sq.ft.)

This floor plan is for illustrative purposes only. It is not drawn to scale. Any measurements, floor areas (including any total floor area), openings and orientations are approximate. No details are guaranteed, they cannot be relied upon for any purpose and do not form any part of any agreement. No liability is taken for any error, omission or misstatement. A party must rely upon its own inspection(s). Powered by www.Propertybox.io