



**WESTWOODLEBER**  
LET US GUIDE YOU HOME

Sheredes Drive, Hoddesdon, EN11 8LH  
£975,000





## Sheredes Drive, Hoddesdon, EN11 8LH

Westwood Leber are delighted to present to the market this beautifully extended and immaculately presented four-bedroom detached family home, ideally located in a highly sought-after position on the border of Hoddesdon and Broxbourne.

The property has been tastefully updated by the current owners, showcasing a number of stylish decorative improvements and a brand-new resin driveway that enhances both kerb appeal and practicality.

Offering spacious and versatile accommodation throughout, the ground floor features four reception rooms, a study, a ground floor W/C, and a stunning luxury kitchen/breakfast room. The impressive master suite includes a generous dressing room and a beautifully appointed en-suite bathroom.

One of the standout features of this home is the beautifully landscaped, south-facing rear garden, which enjoys all-day sunshine—perfect for outdoor entertaining, family gatherings, or simply relaxing in a private and tranquil setting.

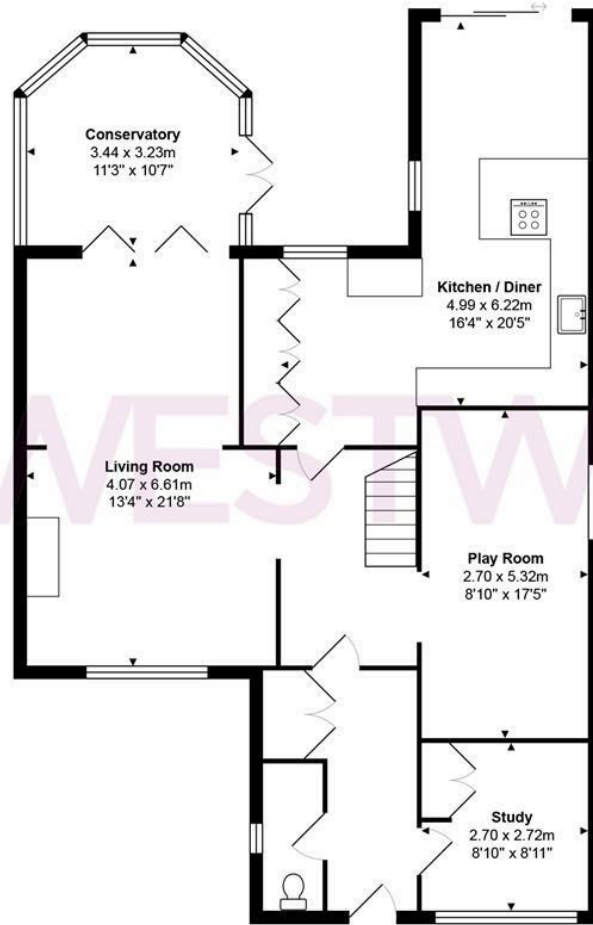
Further benefits include ample off-street parking to the front and the overall high standard of finish throughout. An internal viewing is highly recommended to fully appreciate all that this exceptional family home has to offer.



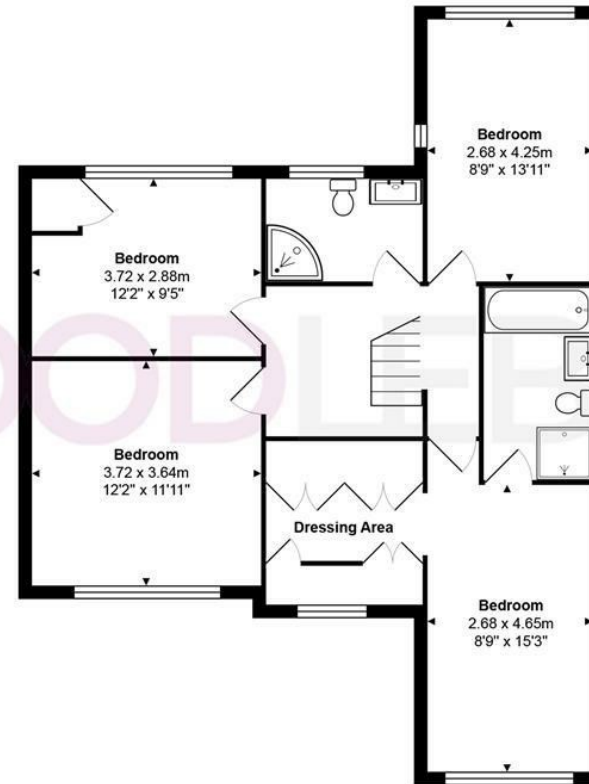


**WESTWOODLEBER**





Ground Floor



First Floor

Total Area: approx. 178.4 m<sup>2</sup> ... 1920 ft<sup>2</sup>

THE FLOORPLAN IS FOR ILLUSTRATIVE PURPOSES ONLY AND IS NOT TO SCALE.  
Measurements and features are approximate and may differ from the actual property. Verify all details independently, no liability is accepted for errors or omissions.

Property marketing provided by www.fotomarketing.co.uk













WESTWOODLEBER



WESTWOODLEBER



WESTWOODLEBER



WESTWOODLEBER





















WESTWOODLEBER



WESTWOODLEBER



WESTWOODLEBER