



## Lillie Square, SW6

£750 Per week

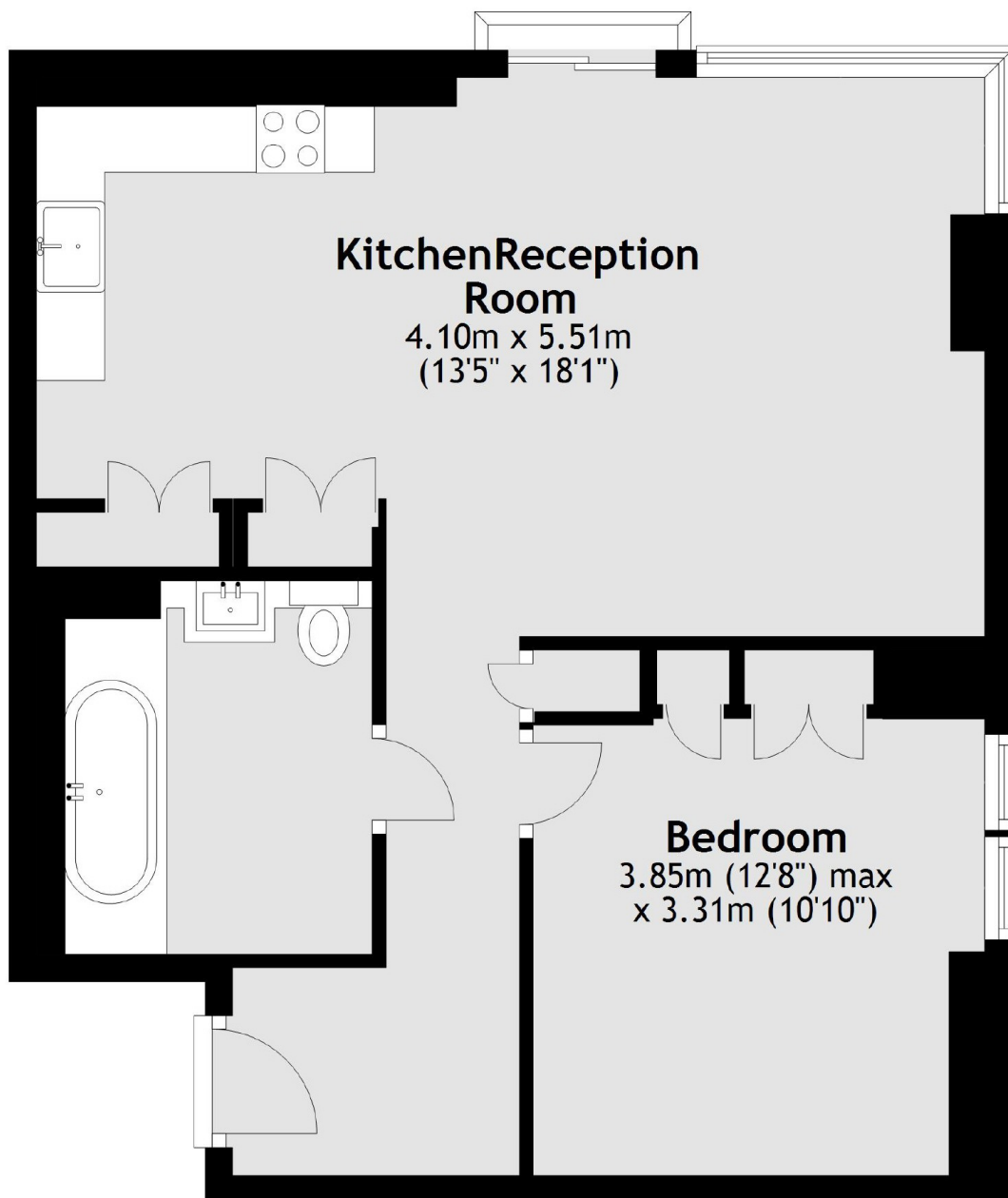
A stunning one bedroom apartment on the ninth floor of this prestigious development. Boasting modern fixtures and fittings throughout the property comprises of a large open plan reception room, large bedroom with built in wardrobe space and a marble bathroom.

Lillie Square is enviably positioned for transport links into the city and is moments from the amenities on Old Brompton Road.

### Features

Ninth Floor  
Concierge  
Residents Gym And Pool  
One Bedroom  
Modern Fixtures and Fittings  
Juliette Balcony

# Lillie Square, London, SW6



Total area: approx. 53.6 sq. metres (577.1 sq. feet)