



Let **UK** Home

1 Bedrooms

Flat - Studio

Located in London

£3,857 Per Month



[info@letukhome.co.uk](mailto:info@letukhome.co.uk)

<https://www.letukhome.co.uk/>

01795 358 886



## 39 Hill Street, Mayfair London

W1J 5NA



Let UK Home are excited to offer a Studio apartment located on Hill Street, Mayfair, London W1J.

Set over sq ft, this one-bedroom apartment comprises of a large double bedroom with ample storage space, modern fitted bathroom, spacious reception room and a unique kitchenette and access to a private gated communal garden.

The apartment is in one of London's most prestigious locations, Mayfair.

The building benefits from spacious living accommodation, lift service, on-site building manager, and is nestled conveniently between two of London's parks - Hyde Park and Green Park.

London underground stations, Green Park, Bond Street and Marble Arch are all within a short stroll away.

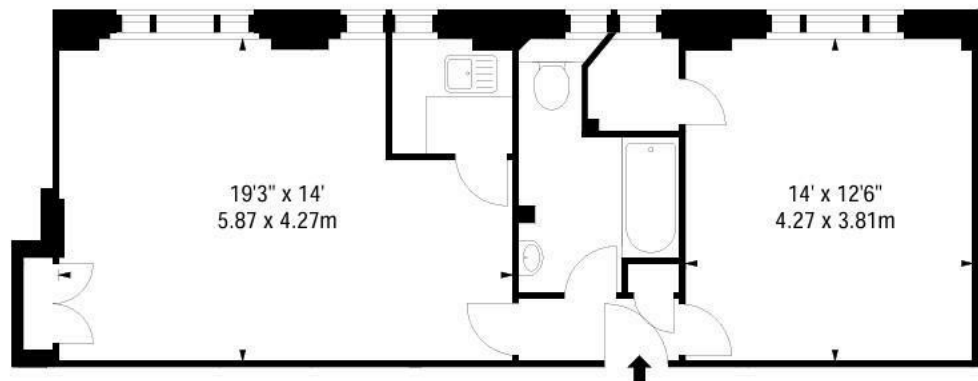
Within walking distance are exquisite restaurants, pubs and bars as well as well-known hotels like The Dorchester, auction houses and a variety of members clubs. Residents of these attractive W1 apartments also enjoy easy access to leafy Hyde Park.

# 39 Hill Street, Mayfair London

£3,857 Per Month

- 6th Floor
- On Site Building Manager
- Lift service & Superfast Broadband
- Available furnished or unfurnished
- Digital TV
- EPC Rating: C
- Video Entry & Pet Friendly
- High Quality Finish
- CCTV





SIXTH FLOOR



Let **UK** Home

3F 2 Eastbourne Terrace  
 Paddington  
 London  
 W2 6LG

01795 358 886

info@letukhome.co.uk

**Council Tax Band: E**

**Local Authority:**

Agents Note: Whilst every care has been taken to prepare these particulars, they are for guidance purposes only. All measurements are approximate and are for general guidance purposes only and whilst every care has been taken to ensure their accuracy, they should not be relied upon and potential buyers/tenants are advised to recheck the measurements.

Energy Efficiency Rating		Current	Potential
Very energy efficient - lower running costs			
(92 plus) <b>A</b>			
(81-91) <b>B</b>			
(69-80) <b>C</b>			
(55-68) <b>D</b>		71	83
(39-54) <b>E</b>			
(21-38) <b>F</b>			
(1-20) <b>G</b>			
Not energy efficient - higher running costs			
<b>England &amp; Wales</b>		EU Directive 2002/91/EC	

<https://www.letukhome.co.uk/>