



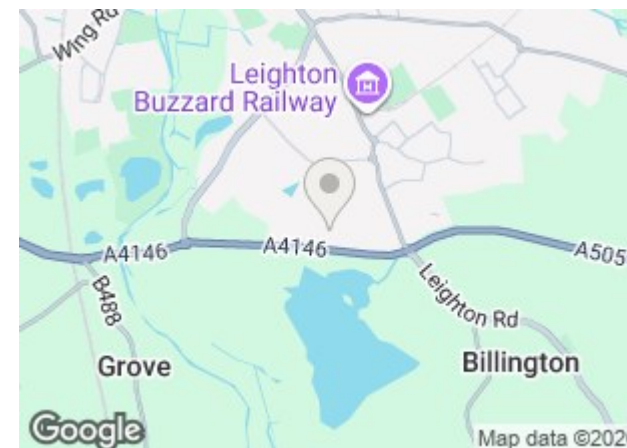
38 Copia Crescent
, Leighton Buzzard, LU7 9SH
£1,200 PCM




WATSONS
LETTING SINCE 1961

38 Copia Crescent, Leighton Buzzard, LU7 9SH

Watsons are delighted to offer for let this well presented two double bedroom top floor apartment in this sought after location. The accommodation comprises: Entrance hallway, open plan lounge / kitchen (with oven, hob, washing machine and fridge freezer), main bedroom with views towards lake and built-in wardrobes, en-suite shower room, bedroom two, main bathroom, and allocated parking for one car. Further benefits include gas central heating, and security intercom system. The property is offered Unfurnished, and is available immediately.



Entrance Hallway

Open Plan Lounge / Kitchen

20'3 (max) x 13'5 (max)
(6.17m (max) x 4.09m (max))

Bedroom One

12'1 x 8'4 (3.68m x 2.54m)

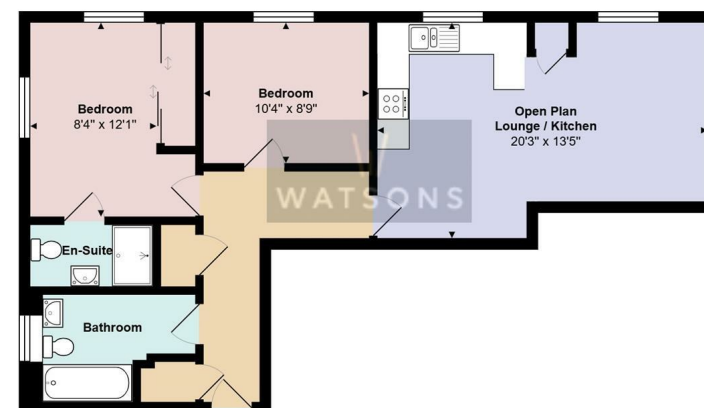
En-Suite Shower Room

Bedroom Two

10'4 x 8'9 (3.15m x 2.67m)

Bathroom

Allocated Parking Space



Top Floor

Total Area: 689 ft²

All measurements are approximate and for display purposes only

Measurements and floor plans are approximate and for guidance only. Any prospective Tenant should check all measurements. Floor plan coverings and fitments are for example only and may not represent the true finish of the property.

17 - 21 Ropa Court, Leighton Buzzard, Bedfordshire, LU7 1DU
Tel: 01525 378309 Email: info@watsonslb.co.uk www.watsonslb.co.uk