



## Carlton Grove, SE15

£495,000

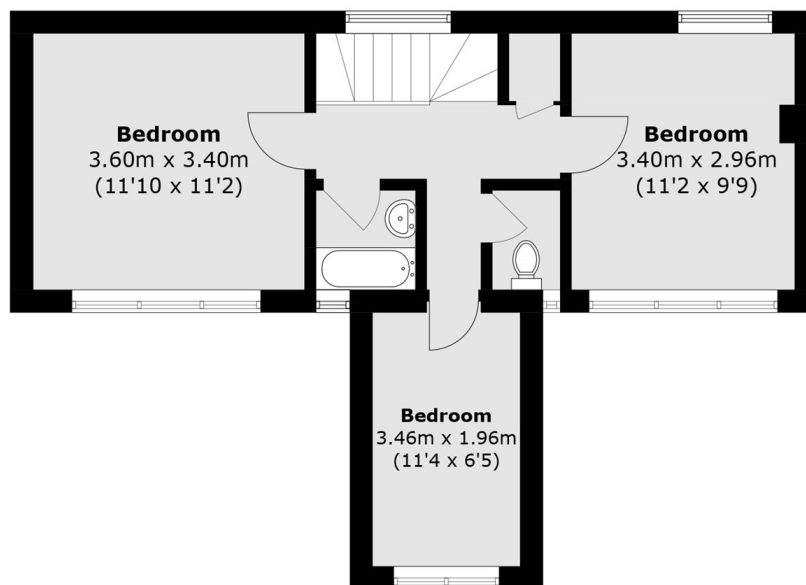
A three bedroom split level maisonette with a front courtyard garden in a quiet residential development on Carlton Grove. The home offers 846 square feet of living space and it's own private entrance.

Carlton Grove is perfectly located for the open spaces of Burgess Park and Peckham Rye Park. Queen's Road Peckham is the nearest station providing Overground services to Shoreditch High Street and Clapham Junction with frequent bus routes into the city and Central London close by.

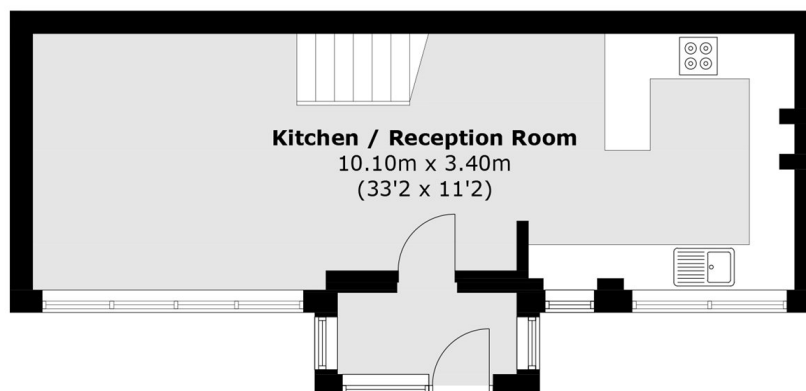
### Features

- Split Level
- Three Bedrooms
- Open Plan Living
- 846 Square Foot
- Private Entrance
- Excellent Location

# Carlton Grove, London, SE15



**First Floor**



**Ground Floor**

Total area (approx.): 78.6 sq. m (846.0 sq. ft)