



## BARGE WALK, SE10

£420,000

Modern apartment  
Two bedrooms  
River views  
Large balcony  
Allocated parking space  
Energy rating: b

@marshandparsons  
marshandparsons.co.uk

MARSH &  
PARSONS



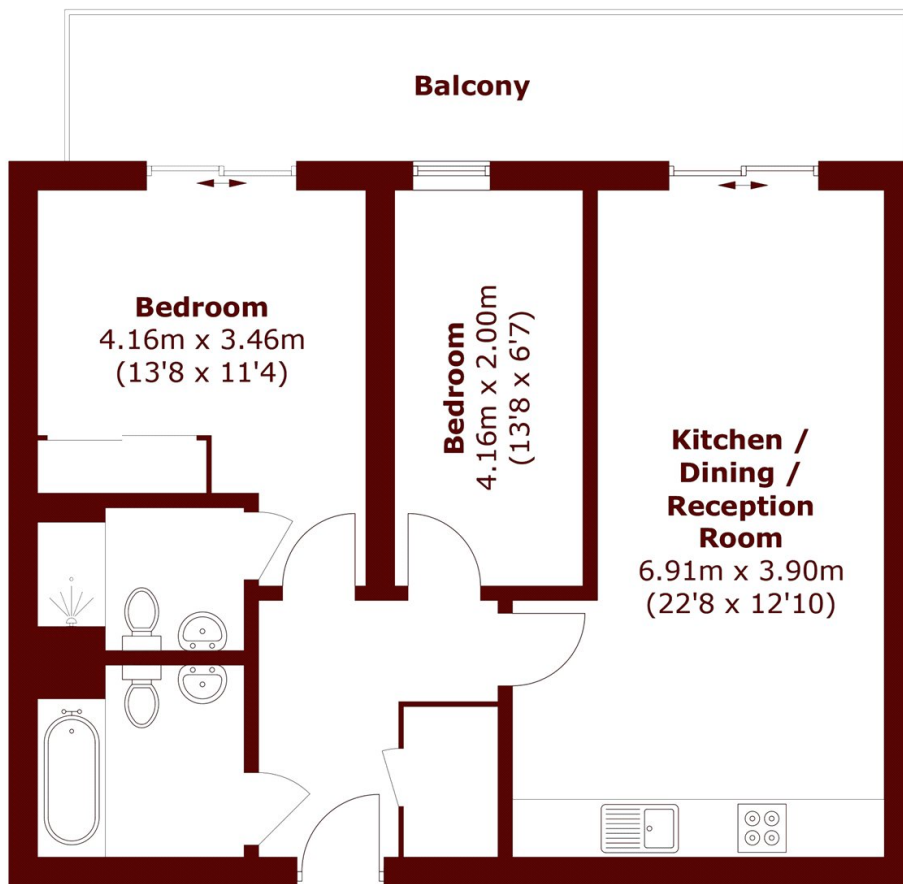
# ABOUT THE PROPERTY

12th floor modern apartment offering river views and featuring a large south east facing balcony and includes an allocated secure parking space. The interior briefly comprises a bright and airy living room offering dining space and an open plan kitchen. Family bathroom, two large double bedrooms, the main bedroom having an en suite. Further benefits include every room having direct access to the large balcony, video entry phone system, wood floors, ample storage, and lift within the building which offers direct access into the gated car park.

Locally there are a few supermarkets and a range of shops moments away on foot, and within walking distance is the famous O2 centre and North Greenwich tube station.



# STEP INSIDE BARGE WALK



Total area (approx.): 61.2 sq. m (658.7 sq. ft)  
Balcony (: 13.2 sq. m (142.0 sq. ft)

**Greenwich**  
020 8312 8312

Energy Rating: B We aim to make our particulars both accurate and reliable. However, they are not guaranteed; nor do they form part of an offer or contract. If you require clarification on any points then please contact us, especially if you're traveling some distance to view. Please note that appliances and heating systems have not been tested and therefore no warranties can be given as to their good working order

**MARSH &  
PARSONS**