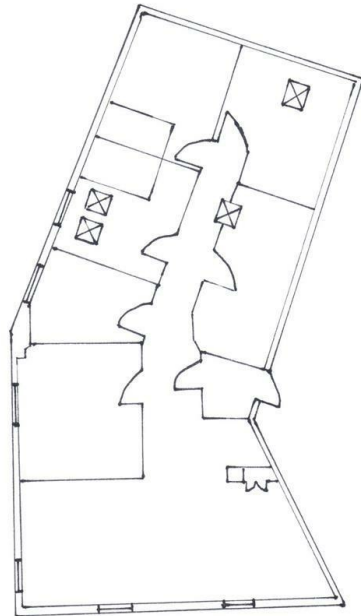


Flat 2, 73 Fisherton Street, Salisbury, SP2 7ST

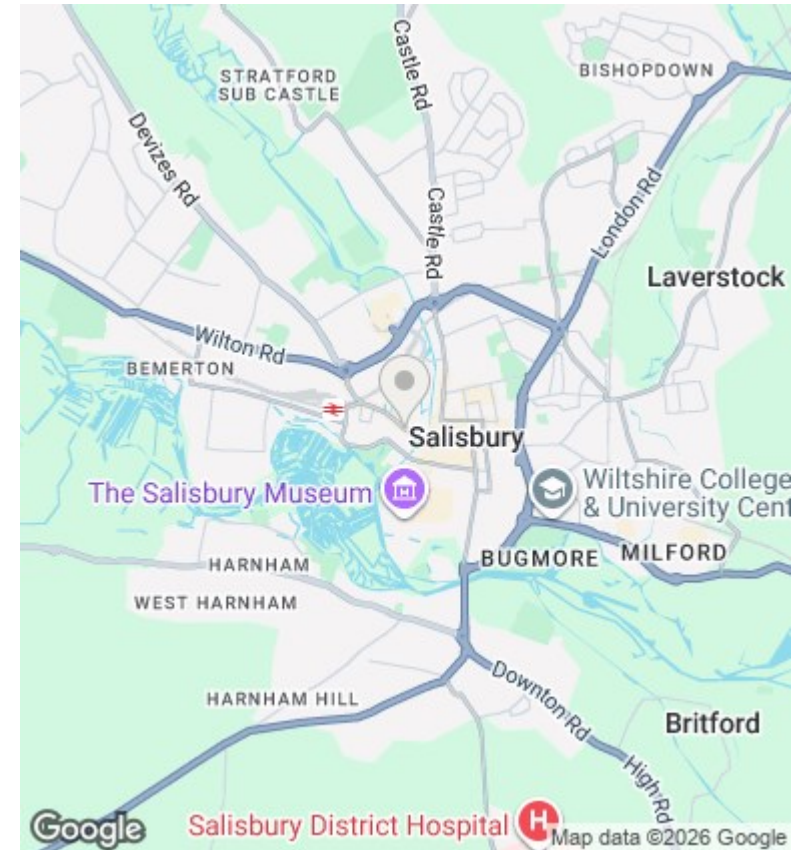
£1,990 PCM

- Well fitted contemporary Kitchen
- Located within City Centre
- WHITE GOODS INCLUDED - 2 En-suite bedrooms
- Available early June
- Smart home
- FULLY FITTED KITCHEN
- Views of the Cathedral Spire
- 4 FULLY FURNISHED BEDROOMS WITH SMART TV PROVIDED
- Living room overlooks Water Lane
- 2 En-suite bedrooms



Floorplan

73 Fisherton Street
Salisbury



Directions

Viewings

Viewings by arrangement only.
Call 01722580263 to make an appointment.

Council Tax Band

C

EPC Rating:

C

Energy Efficiency Rating		
	Current	Potential
<i>Very energy efficient - lower running costs</i>		
(92 plus) A		
(81-91) B		
(69-80) C	74	76
(55-68) D		
(39-54) E		
(21-38) F		
(1-20) G		
<i>Not energy efficient - higher running costs</i>		
England & Wales	EU Directive 2002/91/EC	