



Guide Price
£400,000

Leasehold

3x  1x  1x 

**Dungeness, Romney
Marsh Road, Romney
Marsh, Kent, TN29**

OVER 60?

Secure this property
for up to **59% less!**

Wards
Helping you move forwards



Main features

- Truly rare opportunity to have direct sea views
- Owned by the same family since the 60s
- No onward chain
- Bright and airy accommodation
- Short drive to New Romney where you will find many shops and amenities

Accommodation

GROUND FLOOR

Conservatory: 18'0 (5.49m) x 8'1 (2.47m) narrowing to 4'0 (1.22m)

Lounge: 11'8 x 11'5 (3.56m x 3.48m)

Bedroom 2: 15'5 x 7'5 (4.70m x 2.26m)

Bedroom 3: 7'6 x 7'5 (2.29m x 2.26m)

Kitchen: 18'0 x 7'7 (5.49m x 2.31m)

Inner Hall

Bedroom 1: 11'8 x 9'2 (3.56m x 2.80m)

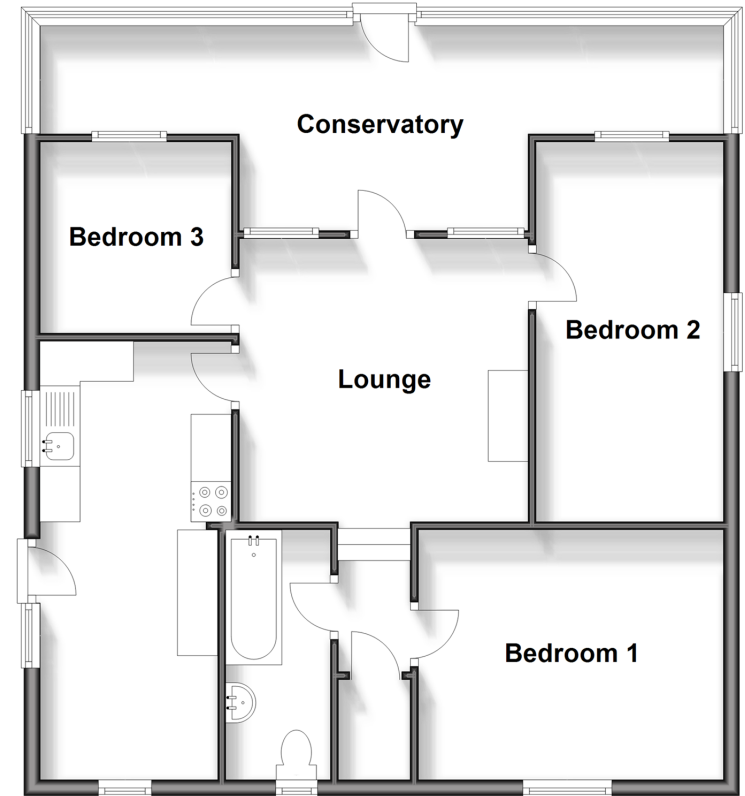
Bathroom

OUTSIDE

Off Road Parking

Front & Rear Gardens

Ground Floor
Approx. 79.9 sq. metres (859.8 sq. feet)



Call New Romney - 01797 363745 ■ wardsokent.co.uk

- A private rental licensing scheme applies to some properties in this area, please contact us before proceeding
- Legal advice should be taken to verify fixtures/fittings, planning, alterations and/or lease details
- Appliances & services are untested, dimensions are approximate and floor plans are not to scale
- Through a Homewise Home For Life Plan people aged 60+ can secure this property for up to 50% less, by purchasing a Lifetime Lease.



13525700/20251115/AH/CA