



Astwood Mews  
South Kensington, SW7

CHESTERTONS



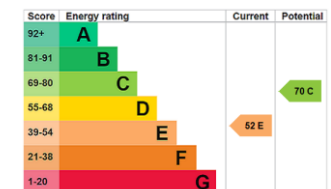


(SHORT LET) Nestled within an idyllic mews, this charming two-bedroom maisonette also benefits from a spacious loft room, offering excellent flexibility as a third occasional bedroom, private office, or media room.

- Maisonette
- Private entrance
- Air conditioning
- Built in storage

### £5,500 pcm

Additional tenant charges apply (fees apply to non-AST tenancies only)  
 Tenancy Agreement Fee: £300  
 References per Tenant/Guarantor: £60  
 Inventory check (approx. £100 – £250 inc. VAT)  
[chestertons.co.uk/property-to-rent/applicable-fees](http://chestertons.co.uk/property-to-rent/applicable-fees)



**Minimum Term:** 1 months  
**Deposit Required:** £5,076.92  
**Local Authority:** Royal Borough of Kensington & Chelsea  
**Council Tax Band:** F  
**EPC Rating:** E  
**Furnished**

### Chestertons South Kensington Lettings

44-48 Old Brompton Road  
 South Kensington  
 London  
 SW7 3DY

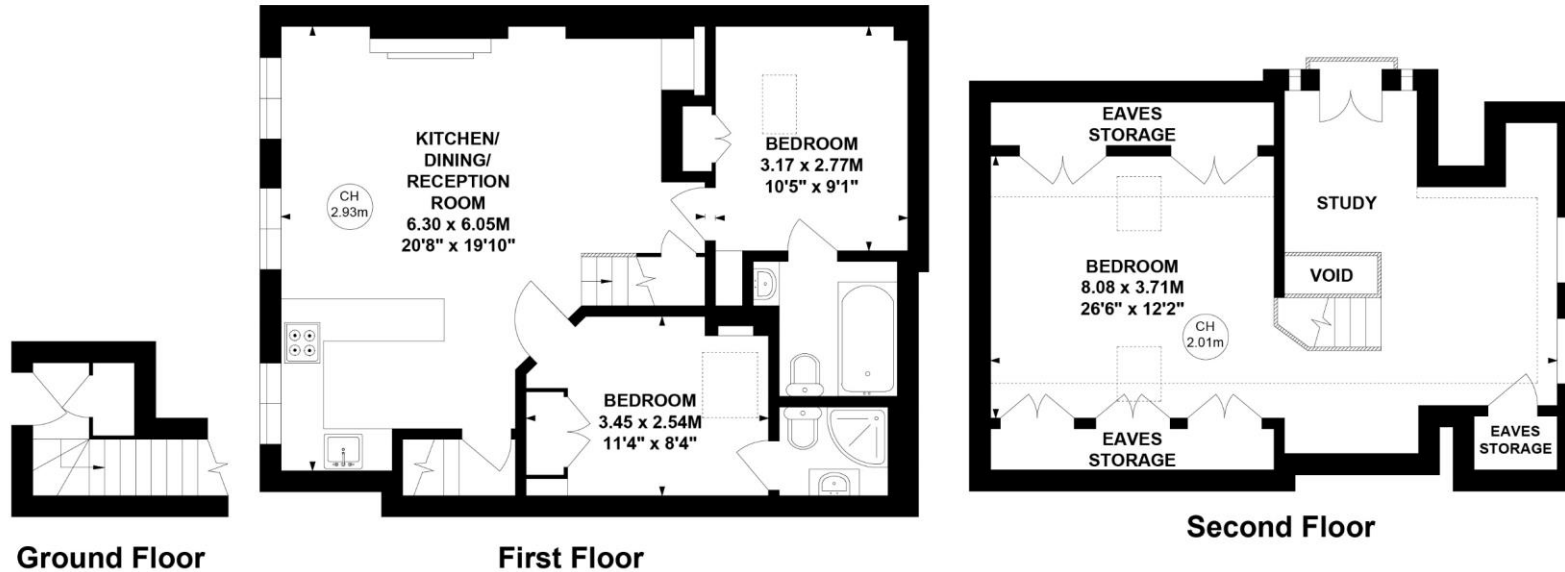
[southkensingtonlettingsusers@chestertons.co.uk](mailto:southkensingtonlettingsusers@chestertons.co.uk)  
 02075891244

# Astwood Mews, SW7

Approximate gross internal area  
**101.36 sq m / 1091 sq ft**  
 (Including Eaves Storage)  
**Eaves Storage**  
**3.25 sq m / 35 sq ft**



Key :  
 CH - Ceiling Height



This plan is not to scale and must be used as layout guidance only. All measurements and areas are approximate and should not be relied upon to provide accurate information. This plan must not be relied upon when making property valuations, design considerations or any other such relevant decisions. We accept no responsibility or liability (whether in contract, tort or otherwise) in relation to any loss whatsoever arising from or in connection with any use of this plan or the adequacy, accuracy or completeness of it or any information within it.

