



## Silwood Street, SE16

£2,500 Per calendar month

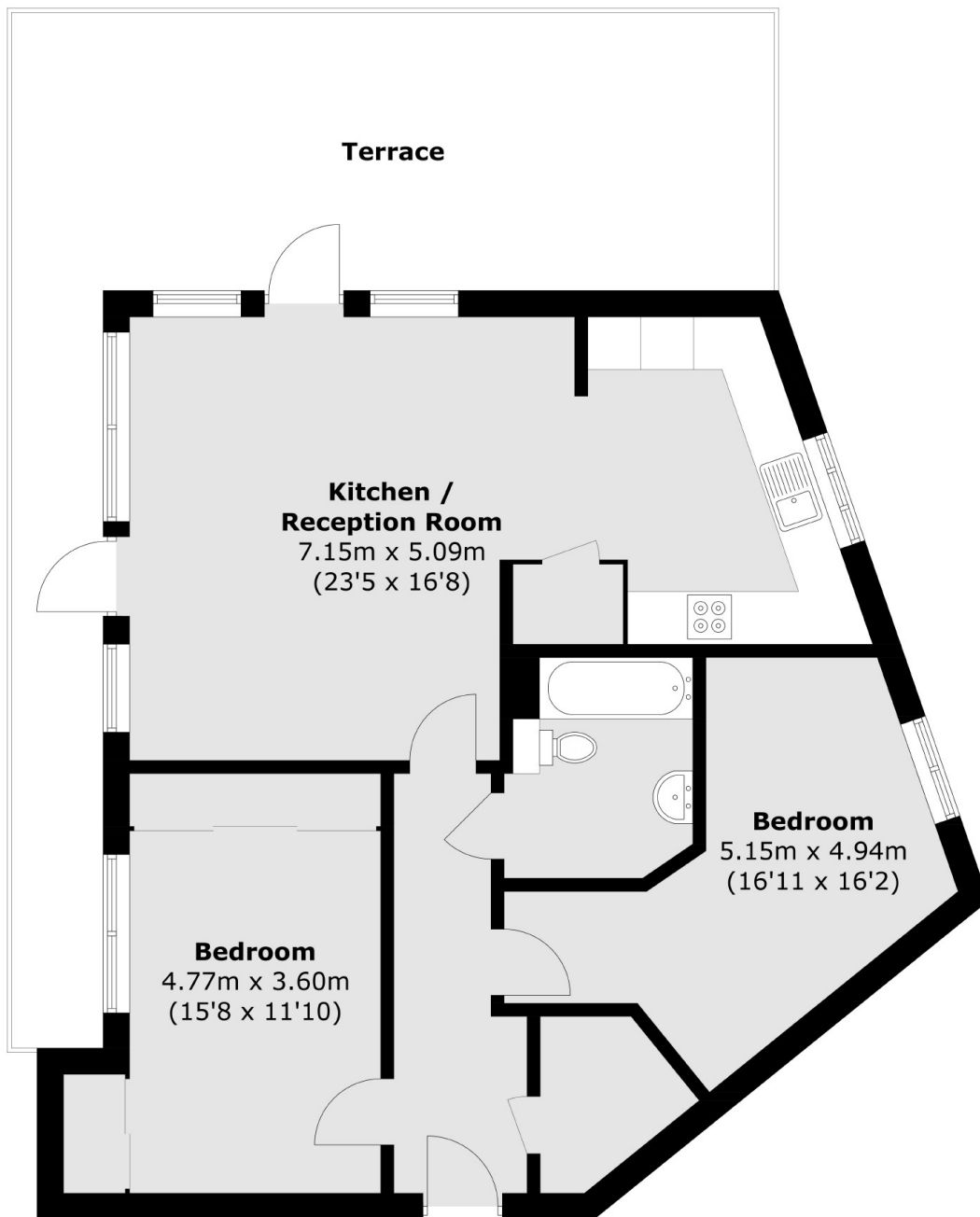
A modern two double bedroom apartment with a spacious open plan lounge/kitchen, boasting ample storage throughout and further benefiting from a large private roof terrace.

Situated close to South Bermondsey train station and Surrey Quays overground station.

### Features

- Two bed
- Part furnished
- Private roof terrace
- Fifth floor
- Close to station
- Spacious

# Silwood Street, London, SE16



Total area (approx.): 80.4 sq. m (865.4 sq. ft)  
Terrace area (approx.): 36.3 sq. m (390.7 sq. ft)