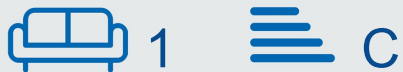


Wheeler Gate

Nottingham
NG1 2NA

Guide Price £250,000



- City Centre flat
- Perfect for investors
- Modern 2 bathrooms
- 1,023 sq ft of space
- Close to amenities
- Ideal for professionals
- Spacious 2 bedrooms
- Built in 2017
- Central Wheeler Gate location
- Viewing recommended

 0115 841 1155

Wheeler Gate, Nottingham, NG1 2NA

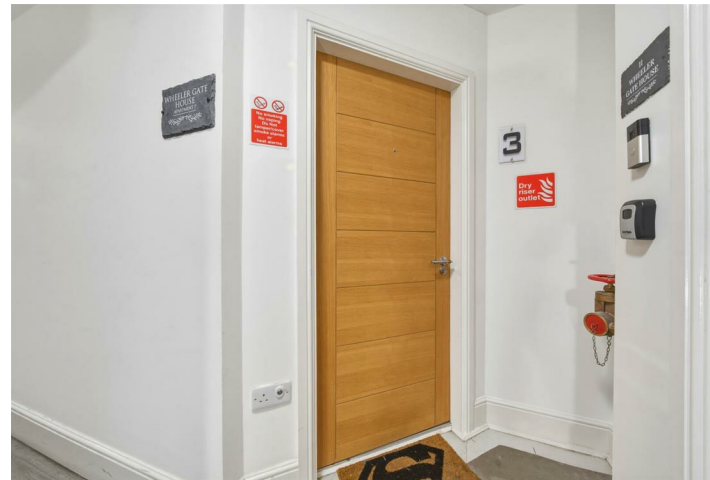
Key Features

Nestled in the heart of Nottingham, this stunning apartment on Wheeler Gate offers a perfect blend of modern living and urban convenience. Built in 2017, the property boasts a generous 1,023 square feet of well-designed space, making it an ideal choice for working professionals or savvy investors seeking a prime city centre location.

Upon entering, you are greeted by a bright and airy reception room that serves as the perfect space for relaxation or entertaining guests. The apartment features two spacious bedrooms, each designed with comfort in mind, providing a peaceful retreat after a busy day. With two well-appointed bathrooms, morning routines are made effortless, ensuring convenience for both residents and visitors alike.

The contemporary design and high-quality finishes throughout the apartment reflect a modern lifestyle, while large windows allow natural light to flood the living spaces, creating a warm and inviting atmosphere. The property's location in the bustling city centre means that a wealth of amenities, including shops, restaurants, and public transport links, are just a stone's throw away, enhancing the appeal for those who thrive in an urban environment.

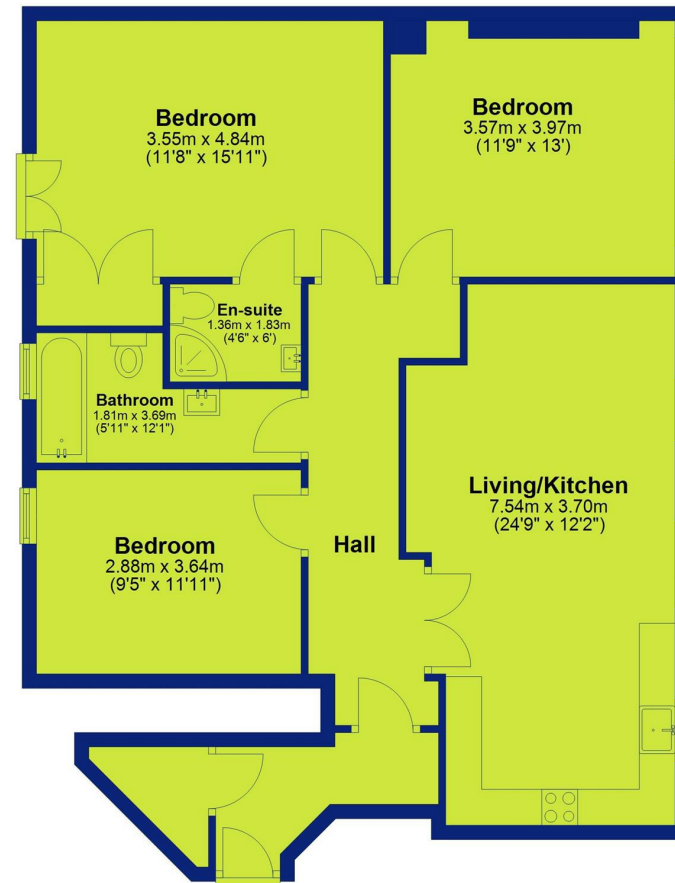
This exceptional apartment is not only a wonderful home but also a promising investment opportunity, given its desirable location and modern features. Whether you are looking to make it your own or add to your property portfolio, this top floor gem is sure to impress. Don't miss the chance to experience city living at its finest.



Wheeler Gate, Nottingham, NG1 2NA



Third Floor
Approx. 97.0 sq. metres (1044.1 sq. feet)



Total area: approx. 97.0 sq. metres (1044.1 sq. feet)

Storage area on lower ground floor is 62.9m²
Plan produced using PlanUp.



0115 841 1155

Wheeler Gate, Nottingham, NG1 2NA

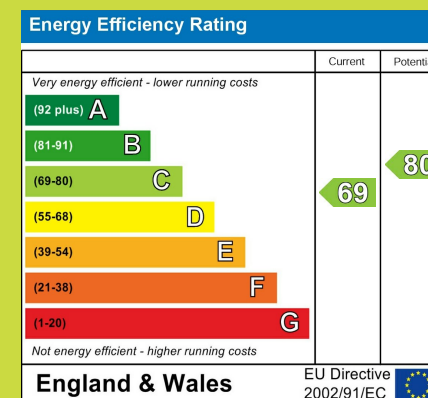


Interested in this home?

Contact the FHP Living Team on 0115 841 1155

23 Bridgford Road
West Bridgford
Nottingham
NG2 6AU

1 Weekday Cross
The Lace Market
Nottingham
NG1 2GB



These sales particulars have been prepared by FHP Living on the instruction of the vendor. Services, equipment and fittings mentioned in these particulars have NOT been tested, and as such, no warranties can be given. Prospective purchasers are advised to make their own enquiries regarding such matters. These sales particulars are produced in good faith and are not intended to form part of a contract. Whilst FHP Living have taken care in obtaining internal measurements, they should only be regarded as approximate.

Purchaser information - Under the Protecting Against Money Laundering and the Proceeds of Crime Act 2002, FHP Living require any successful purchasers proceeding with a purchase to provide two forms of identification i.e. passport or photocard driving license and a recent utility bill. This evidence will be required prior to FHP Living instructing solicitors in the purchase or the sale of a property.