



St. Briavels Mews

Offers in the Region of £230,000

- Garage and Off-Road Driveway Parking
- Private Gated Entrance
- Refurbished Throughout
- Master Bedroom with En-suite
- Low-Maintenance Rear Garden
- Close to Local Amenities, Pubs, Restaurants and Schools
- Excellent Location with Easy Access to Motorway Connections



 2  1  1

Pinkmove

01633 746088
team@pinkmove.co.uk



Pinkmove

About the property

Located in the sought-after area of Coedkernew, this well-presented two-bedroom detached property is situated just outside Newport City Centre and is ideally placed for those working in central Newport or commuting further afield to Cardiff, Bristol or London.

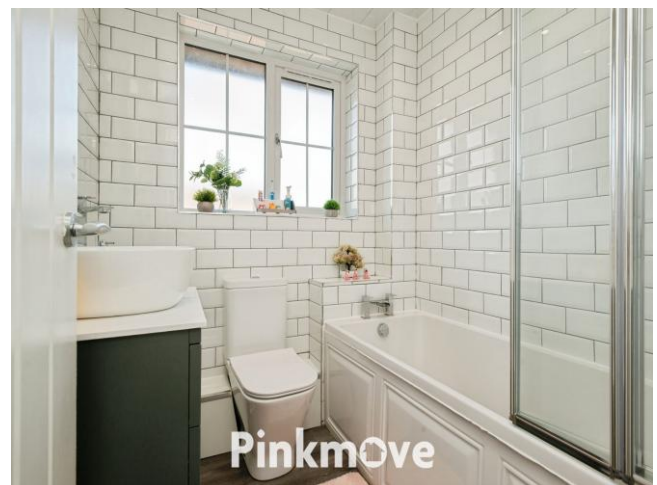
The property is well served by a range of local amenities and currently falls within the catchment areas for John Frost and St Joseph's Secondary Schools. The area also benefits from several pubs and restaurants, making it ideal for families and professionals alike.

Access to the Mews is via a private gated entrance, leading to the garage and off-road driveway immediately to the right. The property is entered through a welcoming hallway, and the living room is a generous size, with a front-facing window overlooking the garden and an attractive feature fireplace. From here, there is access into the kitchen/dining room, which spans the full width of the property. There is ample room for a dining table and chairs, with sliding patio doors opening onto the low-maintenance rear garden. A large under-stairs storage cupboard is also accessed from this room.

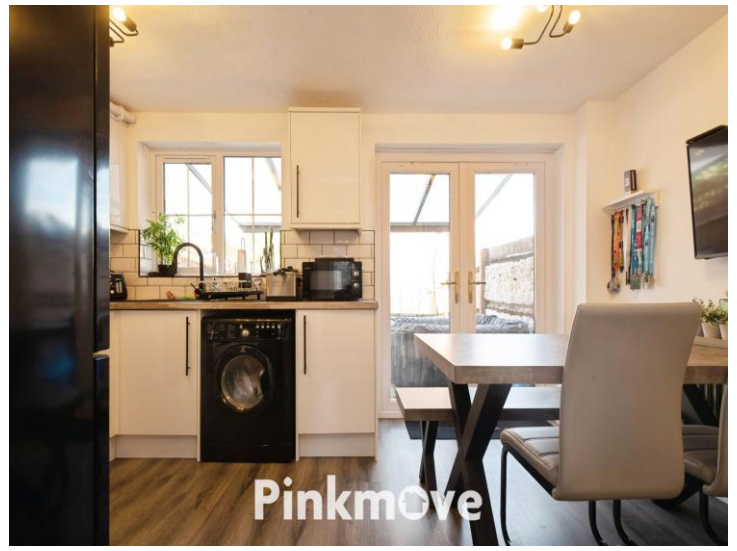
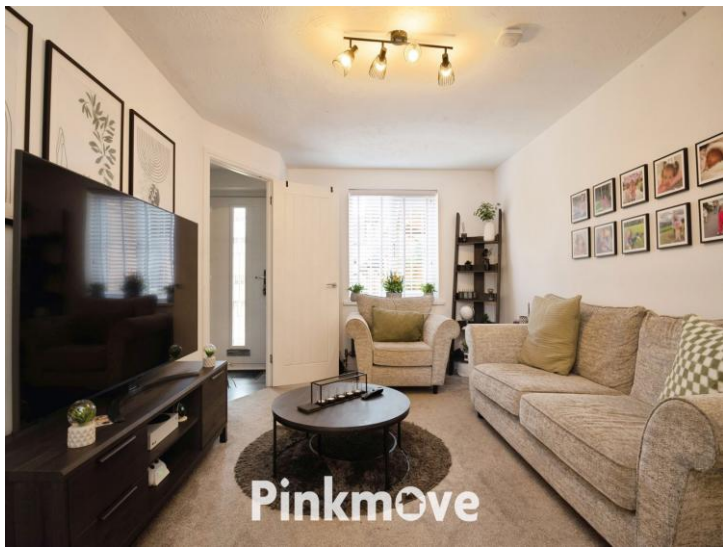
On the first floor are two well-proportioned bedrooms. The principal bedroom further benefits from a modern en-suite shower room, while both bedrooms are fitted with built-in wardrobes. Completing the first floor is the family bathroom, featuring a WC, hand basin and a shower over the bath.



Pinkmove



Pinkmove



Accommodation

Living Room

Kitchen

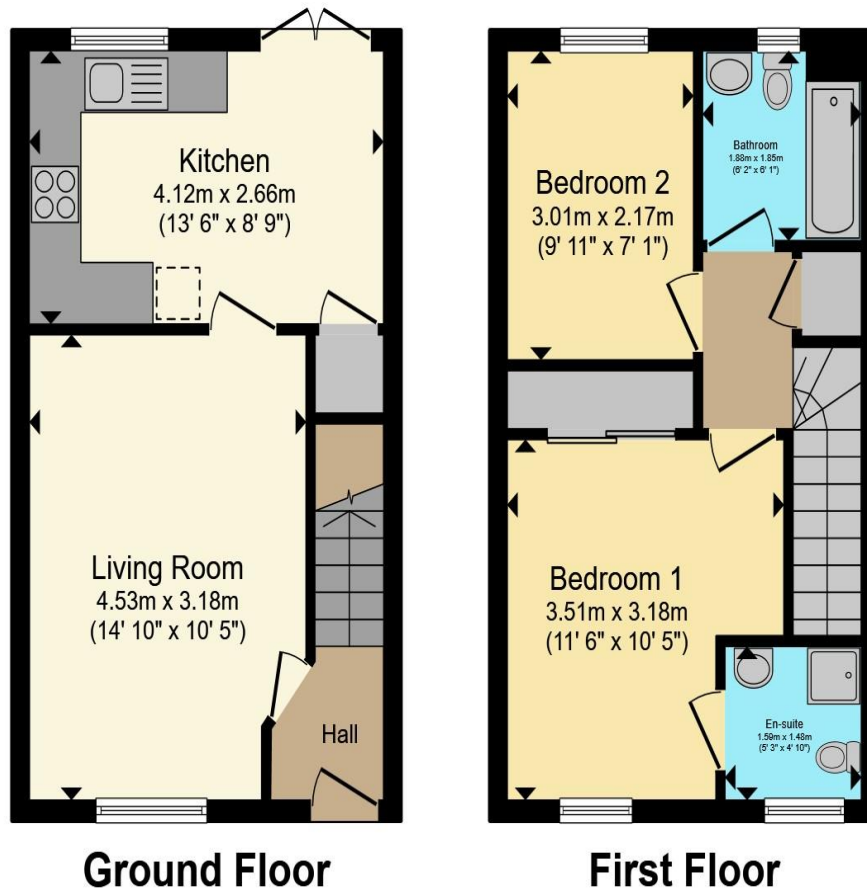
Bedroom 1

En-Suite

Bedroom 2

Bathroom

Floorplan



Total floor area 60.1 sq.m. (646 sq.ft.) approx

This floor plan is for illustrative purposes only. It is not drawn to scale. Any measurements, floor areas (including any total floor area), openings and orientation are approximate. No details are guaranteed, they cannot be relied upon for any purpose and they do not form part of any agreement. No liability is taken for any error, omission or misstatement. A party must rely upon its own inspection(s). Powered by www.focalagent.com



Important Information

Note while we endeavour to make our sales details accurate and reliable, if there is any point which is of particular interest to you, please contact the office and we will be pleased to confirm the position for you. We have not personally tested any apparatus, equipment, fixtures, fittings or services and cannot verify they are in working order or fit for their purposes. Nothing in these particulars is intended to indicate that carpets or curtains, furnishings or fittings, electrical goods (whether wired or not). Gas fires or light fittings or any other fixtures not expressly included form part of the property offered for sale. This computer generated Floorplan, if applicable, is intended as a general guide to the layout and design of the property. It is not to scale and should not be relied upon for dimensions. Tenure: We cannot confirm the tenure of the property as we have not had access to the legal documents. The buyer is advised to obtain verification from their solicitor or surveyor.

Peter Alan Limited is registered in England and Wales under company number 2073153. Registered Office is Cumbria House, 16-20 Hockliffe Street, Leighton Buzzard, Bedfordshire, LU7 1GN. VAT Registration Number is 500 2481 05. For activities relating to regulated mortgages and non-investment insurance contracts, Peter Alan Limited is an appointed representative of Connells Limited which is authorised and regulated by the Financial Conduct Authority. Connells Limited's Financial Services Register number is 302221. Most buy-to-let

