

INTRODUCING

Woolrych Court, Watford WD17 2PQ

1 Bedroom Flat - Conversion for sale

£215,000

Price

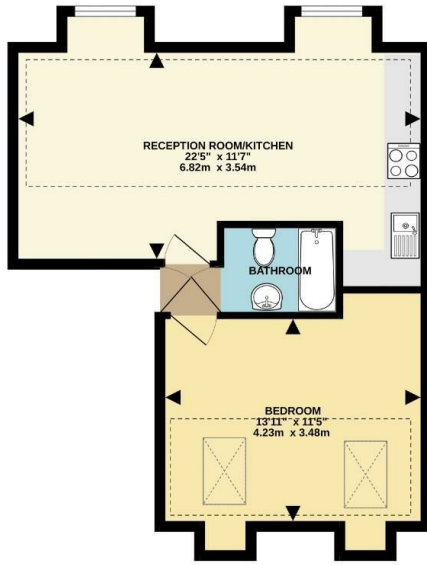


1 Bedrooms/1 Bathrooms EPC Rating: C

- Top Floor Apartment
- Double Bedroom
- Council Tax Band C
- One Allocated Parking Space
- Open Plan Living Room/Kitchen
- Bathroom
- Well Located For The Station
- Security Intercom Entry System

Floor Plan

490 sq.ft. (45.5 sq.m.) approx.



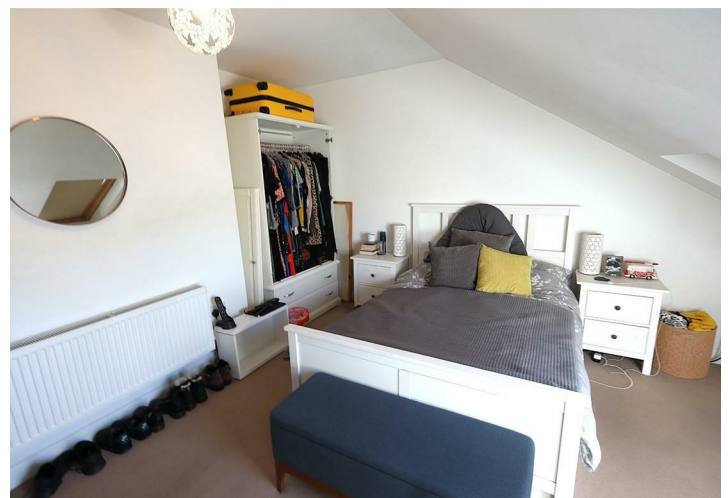
TOTAL FLOOR AREA: 490 sq ft. (45.5 sq m) approx.
While every effort has been made to ensure the accuracy of the above information, the advertiser does not accept any responsibility for any errors, omissions or misstatements. This plan is for guidance only and should be used in conjunction with any other information provided. The services, systems and appliances shown have not been tested and no guarantee is given for their operation or efficiency. ©2025

Map



Energy Efficiency

Energy Efficiency Rating		Current	Potential
Very energy efficient - lower running costs			
(92 plus) A			
(81-91) B			
(69-80) C		76	77
(55-68) D			
(39-54) E			
(21-38) F			
(1-20) G			
Not energy efficient - higher running costs			
England & Wales		EU Directive 2002/91/EC	



These particulars, whilst believed to be accurate are set out as a general outline only for guidance and do not constitute any part of an offer or contract. Intending purchasers should not rely on them as statements of representation of fact, but must satisfy themselves by inspection or otherwise as to their accuracy. No person in this firm's employment has the authority to make or give any representation or warranty in respect of the property.