



HARDINGS

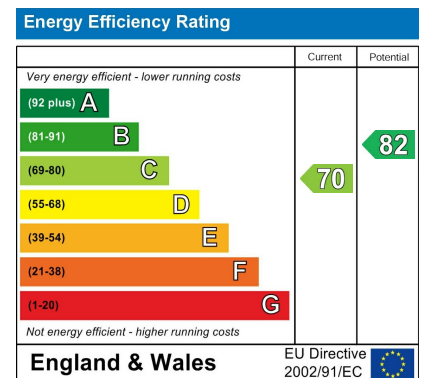


The Willows
Guide Price £895,000



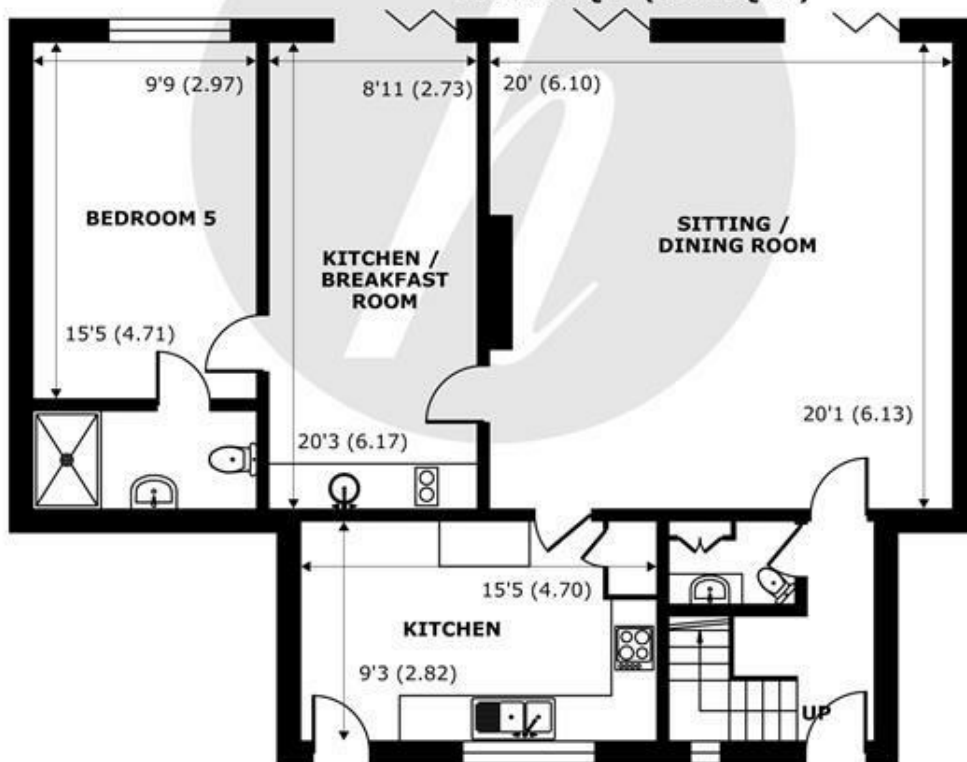
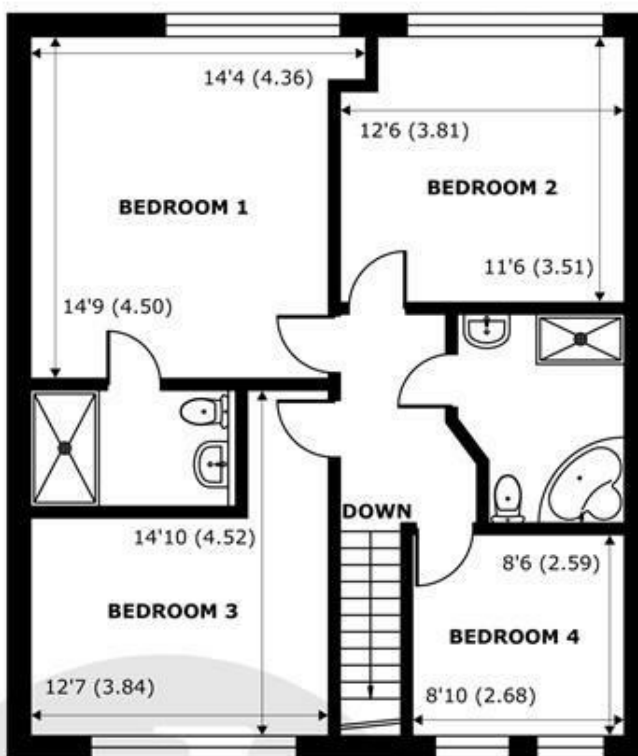
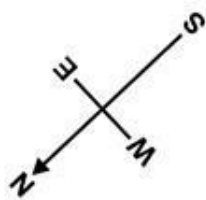


A Mews Style 4 bed House set within a close proximity of the River Thames and Windsor Marina. The property offers generous and airy accommodation featuring flexible reception rooms, four bedrooms and three bathrooms all styled in a contemporary and neutral décor. Further benefits are an open plan principle living room leading to a private garden and off street parking. No onward chain.



Features

- Mews Style House
- Close to River Thames and Windsor Marina
- Contemporary Interior
- Flexible Accommodations
- Private Low Maintenance Garden
- 4 Bedrooms
- 3 Bathrooms
- Approximately 1800 sqft
- Off Street Parking
- No Onward Chain



The Willows, Windsor, SL4

Approximate Internal Area = 1822 sq ft / 169.2 sq m

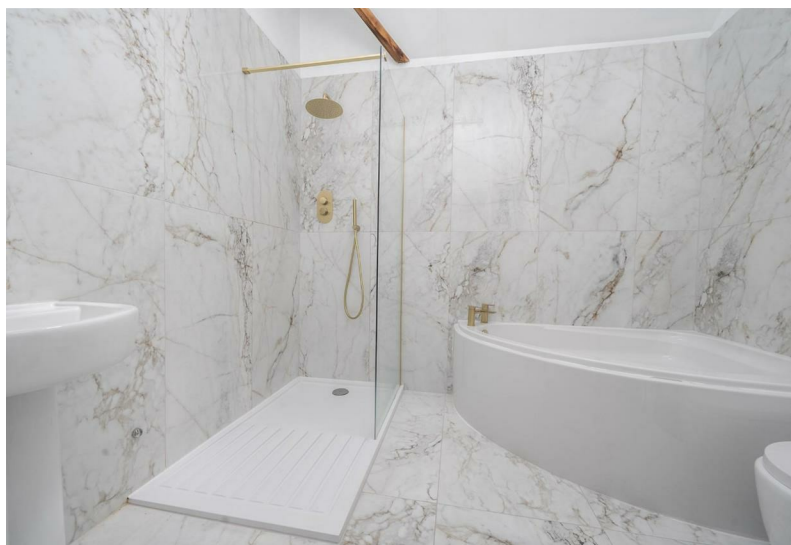
Approximate External Area = 2077 sq ft / 192.9 sq m

For identification only - Not to scale



Floor plan produced in accordance with RICS Property Measurement 2nd Edition, Incorporating International Property Measurement Standards (IPMS2 Residential). © nichecom 2026. Produced for Hardings. REF: 1454964





11 High Street, Windsor, Berkshire, SL4 1LD,
T: 01753 833 118 | E: info@hardings.co.uk
www.hardings.co.uk

