

Kingston Road, SW19

£695,000

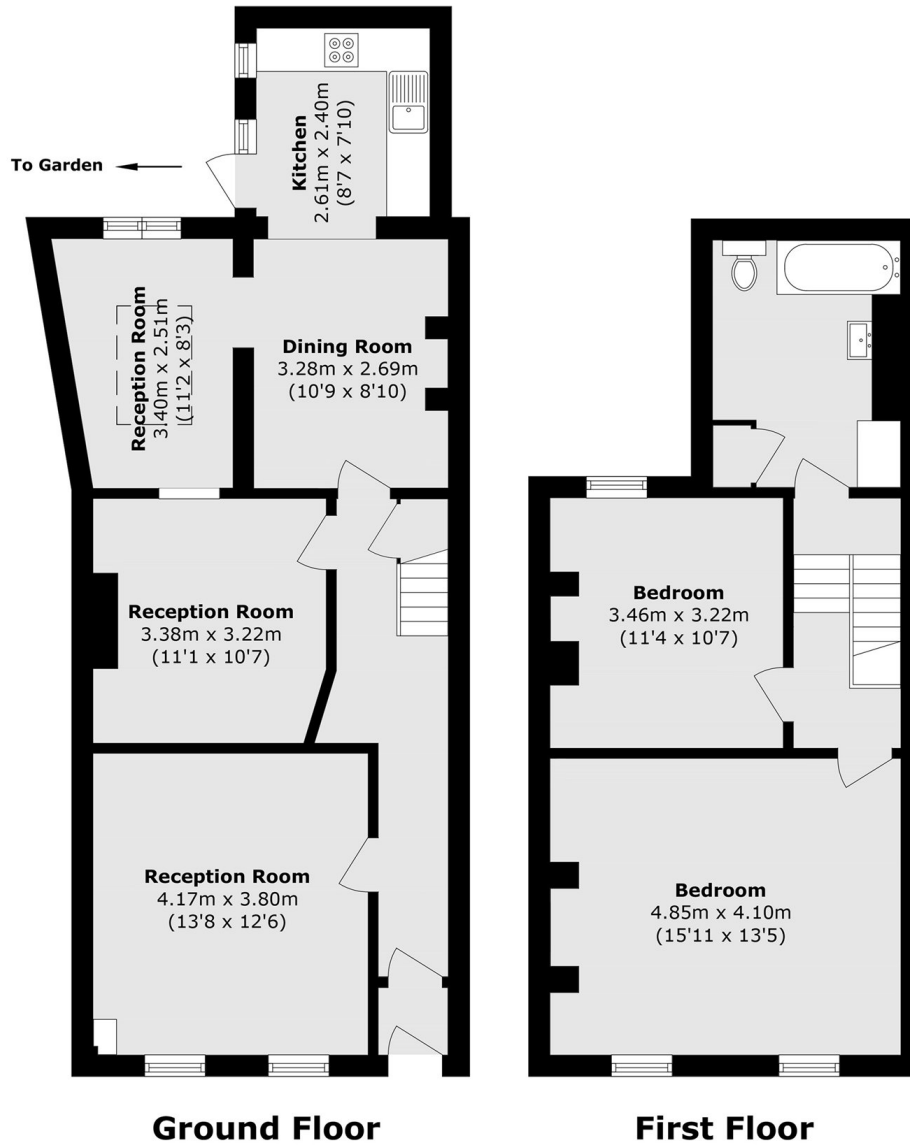
A two double bedroom, three reception room Victorian terrace house, complete with a private garden. The property is freehold, presented in superb condition and has no onward chain

Conveniently situated close to Wimbledon Town Centre, just moments away from Wimbledon Tube and Overground Station and a great range of restaurants and bars.

Features

- Two Double Bedrooms
- Three Reception Rooms
- Well Presented Throughout
- Private Rear Garden
- Off Street Parking Option
- No Onward Chain

Kingston Road, London, SW19



Total area (approx.): 110.1 sq. m (1185.1 sq. ft)