



# HARDINGS



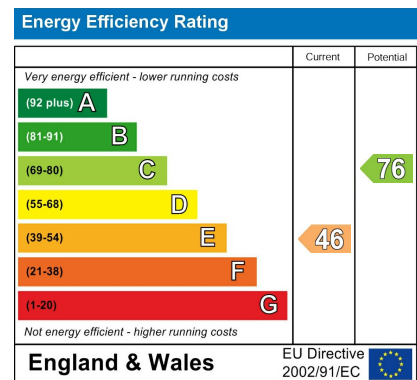
Edinburgh Gardens  
Guide Price £450,000







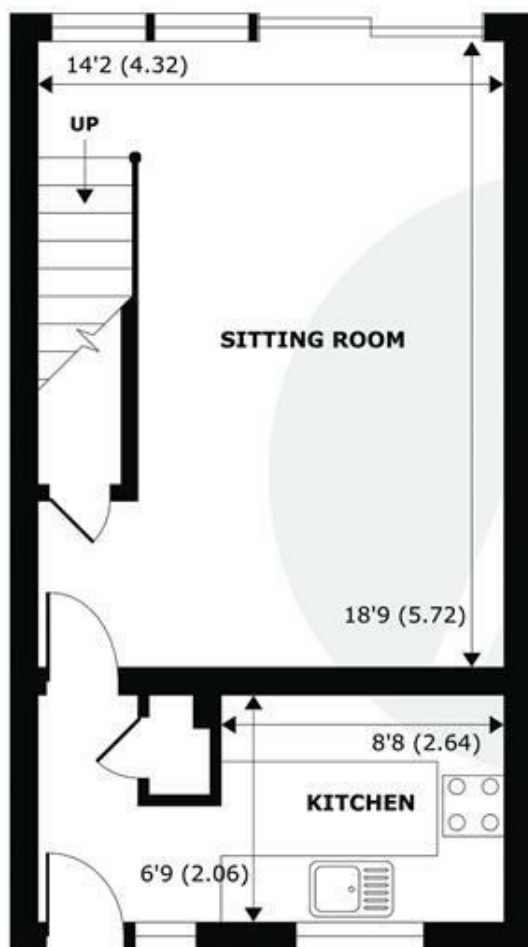
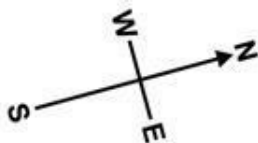
A beautifully styled two double bedrooms terraced house located in a sought after gated development in Windsor Town centre , in close proximity to the Long Walk , restaurants, bars and mainline railway stations. No onward chain.



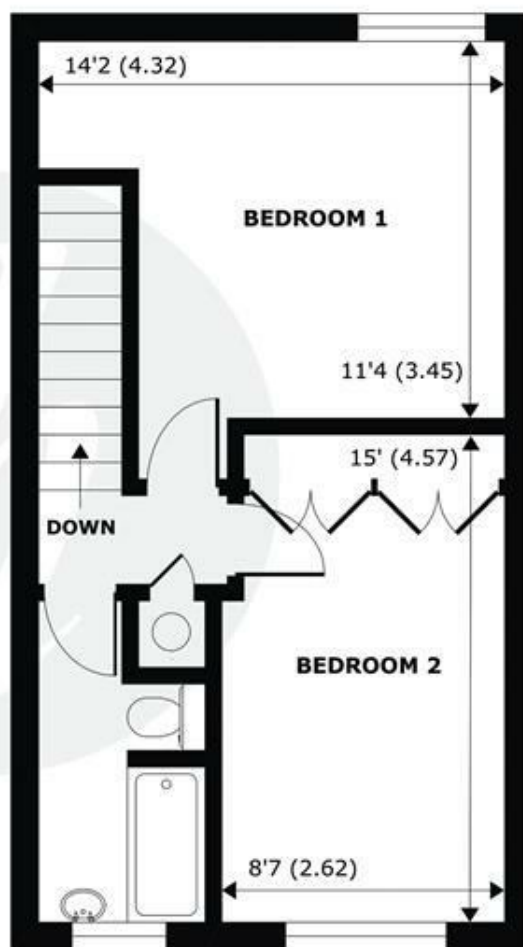
## Features

- Refurbished terraced house
- 2 Double bedrooms
- Off street parking
- Close to Long Walk
- Well maintained communal grounds
- Gated community
- Reception room with doors to rear patio garden
- Contemporary kitchen
- Bathroom

NOT TO SCALE



**GROUND FLOOR**  
abt 441 SQFT (41 SQMT)



**FIRST FLOOR**  
abt 441 SQFT (41 SQMT)

**APPROX. GROSS INTERNAL FLOOR AREA 742 SQFT 68.9 SQM**  
**APPROX. GROSS EXTERNAL FLOOR AREA 882 SQFT 81.9 SQM**

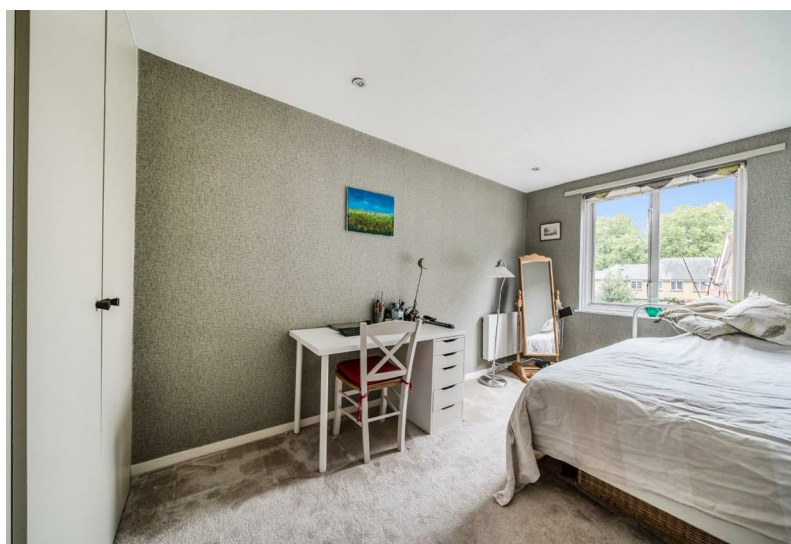
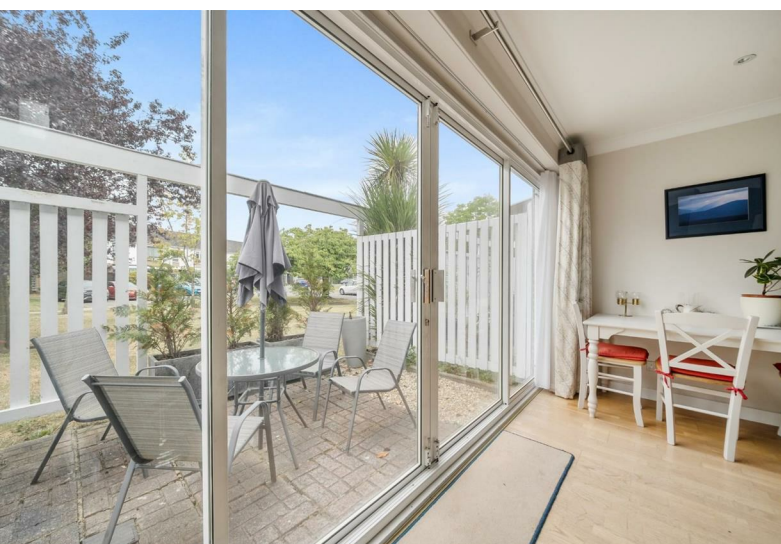
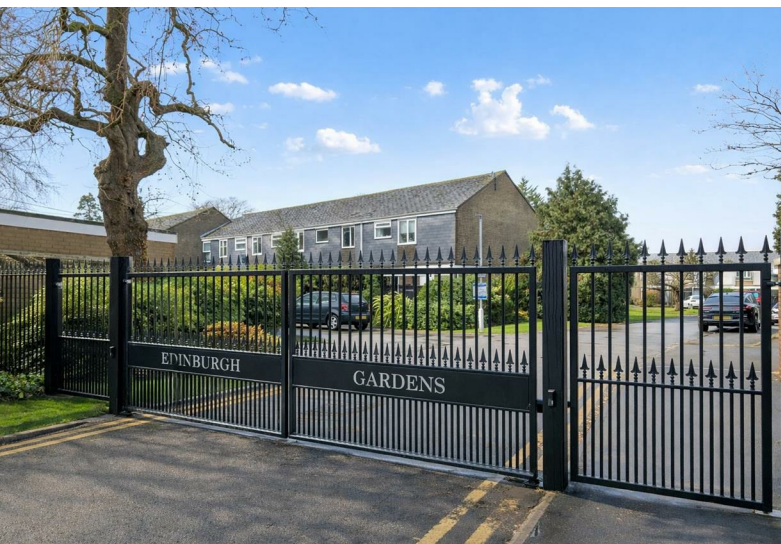
## Edinburgh Gardens, Windsor, SL4



Whilst every attempt has been made to ensure the accuracy of the floor plan contained here, measurements of doors, windows and rooms are approximate and no responsibility is taken for any error, omission or misstatement. These plans are for representation purposes only as defined by RICS Code of Measuring Practice and should be used as such by any prospective purchaser. Specifically no guarantee is given on the total square footage of the property if quoted on this plan. Any figure given is for initial guidance only and should not be relied on as a basis of valuation.

Copyright nichecom.co.uk 2019 Produced for Hardings ref. 450346





11 High Street, Windsor, Berkshire, SL4 1LD,  
T: 01753 833 118 | E: [info@hardings.co.uk](mailto:info@hardings.co.uk)  
[www.hardings.co.uk](http://www.hardings.co.uk)

