



Price
£365,000

Freehold

3x  1x  2x 

**Sydney Road,
Whitstable, Kent, CT5**

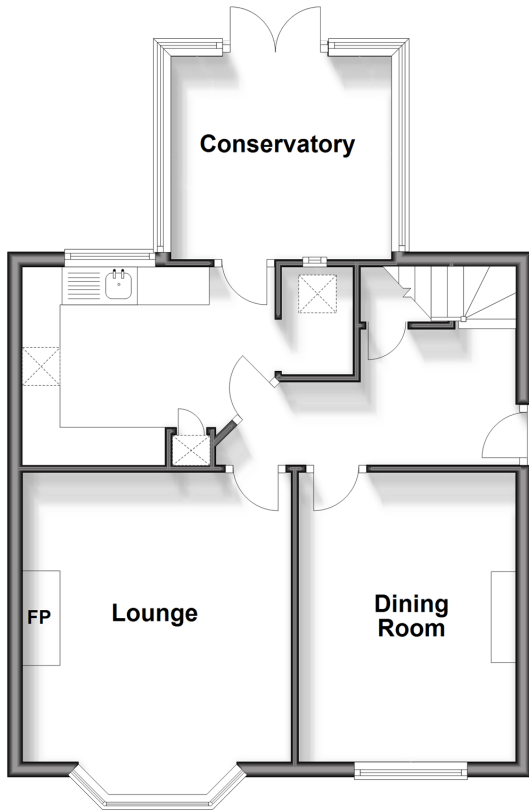
OVER 60?

Secure this property
for up to **59% less!**

Wards
Helping you move forwards

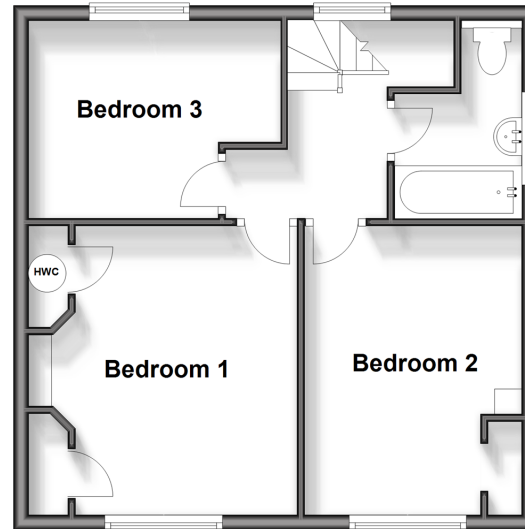
Ground Floor

Approx. 51.3 sq. metres (552.7 sq. feet)



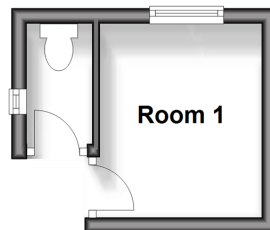
First Floor

Approx. 42.9 sq. metres (461.7 sq. feet)



Outbuilding

Approx. 7.0 sq. metres (75.8 sq. feet)



Accommodation

GROUND FLOOR

Entrance Hallway

Dining Room: 12'7 x 9'5 (3.84m x 2.87m)

Lounge: 14'6 x 11'8 (4.42m x 3.56m)

Kitchen: 10'11 x 8'6 (3.33m x 2.59m)

Conservatory: 9'11 x 9'6 (3.02m x 2.90m)

FIRST FLOOR

Landing

Bedroom 1 : 12'5 x 10'8 (3.79m x 3.25m)

Bedroom 2 : 12'6 x 9'6 (3.81m x 2.90m)

Bedroom 3 : 11'0 (3.36m) narrowing to 8'3 (2.52m) x 8'9 (2.67m)

Bathroom

OUTSIDE

Driveway

Front Garden

Rear Garden

OUTBUILDING

Room 1

Separate Toilet



Main features

- Impressive rear garden
- Well presented with neutral décor throughout
- Modern Wickes' kitchen and boiler replaced in 2019
- Separate dining room and conservatory
- Large driveway re-paved in 2014



Nearest Schools

Primary Schools: Whitstable Junior School 0.5 miles, Whitstable and Seasalter Endowed C of E Junior School 0.6 miles, Joy Lane Primary 0.6 miles



Transport Information

Train Stations: Whitstable 0.4 miles, Chestfield & Swalecliffe 1.6 miles, Herne Bay 3.7 miles



Address

Sydney Road, Whitstable, Kent, CT5



Directions

For directions to this property please contact us.



Call Whitstable Branch 01227 772272 ■ wardsofkent.co.uk



- Legal advice should be taken to verify fixtures/fittings, planning, alterations and/or lease details
- Appliances & services are untested, dimensions are approximate and floor plans are not to scale
- Through a Homewise Home For Life Plan people aged 60+ can secure this property for up to 59% less, by purchasing a Lifetime Lease.



12033568/20250721/AR/NF