



Cantium Place , Snodland ME6 5FD

- Spacious 3-bedroom home, chain-free and ready to move in.
- Generous living room and handy downstairs WC for everyday comfort.
- Allocated parking and attractive communal gardens add extra convenience.
- Kitchen/dining room with direct access to a sunny, low-maintenance garden.
- Master bedroom with en suite, plus two doubles and a versatile single/office.
- Prime Snodland location—walking distance to station, schools, shops, and countryside.

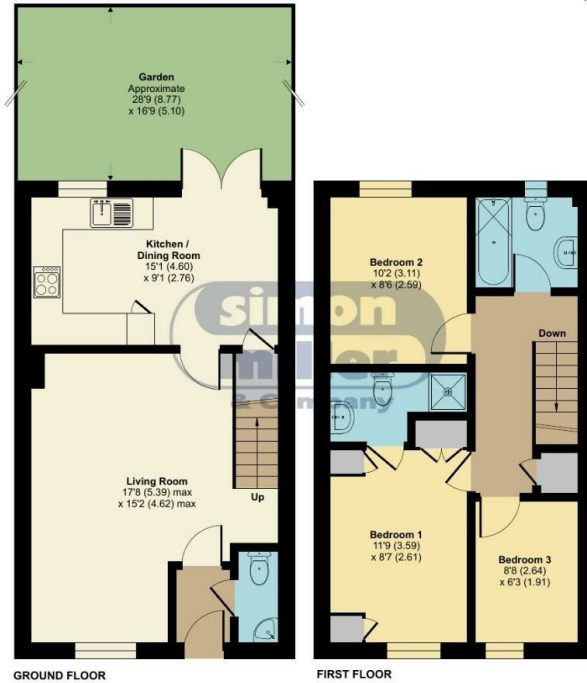
£300,000 Freehold

Local Authority
Council Tax Band
EPC Rating

Cantium Place, Snodland, ME6

Approximate Area = 826 sq ft / 76.7 sq m

For identification only - Not to scale



Floor plan produced in accordance with RICS Property Measurement 2nd Edition, Incorporating International Property Measurement Standards (IPMS2 Residential). © n3chem 2026. Produced for Simon Miller & Company. REF: 1437145



Mailing Office
777 London Road, Larkfield, Aylesford,
Kent, ME20 6DE

Contact
01732 875706
larkfieldsales@simonmiller.co.uk
<https://simonmiller.co.uk/>

Agents Note: Whilst every care has been taken to prepare these particulars, they are for guidance purposes only. All measurements are approximate and for general guidance purposes only and whilst every care has been taken to ensure accuracy, they should not be relied upon and potential buyers/tenants are advised to recheck the measurements.