

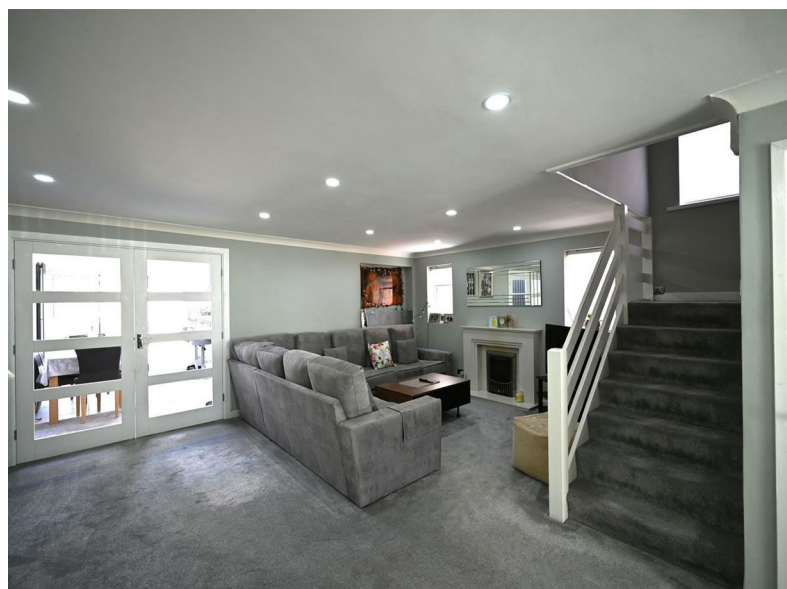
ENGLANDS



21 Ingham Way

Harborne, Birmingham, B17 8SW

£450,000





PROPERTY DESCRIPTION

Very well-presented semi-detached property having been considerably improved and extended by the current owners. Briefly comprising open plan living/dining room, full width extended kitchen with integrated appliances, secondary kitchen and utility in part of garage, ground floor WC, three bedrooms, bathroom and easy-to-maintain rear garden. Viewing is highly recommended.

Ingham Way is very well-situated off Hamilton Avenue, in turn leading between Fitzroy Avenue and Hagley Road West. It is readily accessible to the Queen Elizabeth Medical Centre, the University of Birmingham and Harborne Leisure Centre, as well as excellent amenities around Harborne High Street, also the M5 motorway network via junction 3 and regular transport services leading along Hagley Road West to comprehensive city centre leisure, entertainment and shopping facilities.





The property is set back from the road by a creteprint drive, providing parking for multiple vehicles and UPVC double glazed entrance door with large double glazed side window leads into:

PORCH

Having tiled floor, meter cupboard, radiator and ceiling light point.

GROUND FLOOR WC

Having pedestal wash handbasin with mixer tap over, vertical radiator, ceiling light point, low flush WC and full complementary tiling to both floor and walls. In addition, UPVC double glazed window with obscured glass.

UPVC double glazed inner door leading to:

OPEN PLAN LIVING ROOM

8.36 max x 5.45 max (27'5" max x 17'10" max)
Having recessed ceiling spotlights, two vertical radiators, coving to ceiling, fireplace with marble-style surround and hearth with inset gas fire, two UPVC double glazed windows to the side and double doors leading into the dining kitchen.

PARTIALLY-CONVERTED GARAGE

Incorporating secondary kitchen having matching wall and base units, work surfaces, stainless steel single sink drainer with mixer tap over, five burner gas hob, and utility area with plumbing and spaces for washing machine and dryer. In addition, wall-mounted Worcester gas Combi boiler.

Useful walk-in storage cupboard having ceiling light point and fitted shelving.

EXTENDED DINING KITCHEN

5.09 max x 3.47 max (16'8" max x 11'4" max)
Having tiled floor, a range of matching wall and base units and composite worktops. Integrated appliances include: Hotpoint dishwasher, Bosch electric oven and microwave/combination oven and five burner gas hob with wall-mounted extractor fan over. Peninsula unit, recessed ceiling spotlights, ceiling light point, two Velux skylights, two vertical radiators, UPVC double glazed window overlooking the garden, plus UPVC double glazed bifold doors leading outside.

Stairs rising to first floor accommodation.

LANDING

UPVC double glazed window, loft access hatch, useful airing cupboard with built-in shelving and ceiling light point.

BEDROOM ONE - REAR

3.46 max x 3.52 max (11'4" max x 11'6" max)
Having UPVC double glazed window overlooking the rear garden, a range of fitted wardrobes with overhead cupboards, ceiling light point and radiator.

BEDROOM TWO - FRONT

3.49 max x 2.88 max (11'5" max x 9'5" max)
Having a range of built-in wardrobes, overhead cupboards and drawers, ceiling light point, radiator, and UPVC double glazed window overlooking the front.

BEDROOM THREE - REAR

4.42 max into doorway x 1.84 max (14'6" max into doorway x 6'0" max)
Having UPVC double glazed window overlooking the rear, radiator and ceiling light point.

BATHROOM

Having corner bath with side screen, mixer tap and wall-mounted shower over, wash handbasin with mixer tap over and being set into vanity storage, low flush WC, full complementary tiling to walls, radiator, ceiling light point, extractor fan, vinyl flooring and UPVC double glazed window with obscured glass.

REAR GARDEN

Being paved, retaining wall with borders, fence panels to three sides and UPVC double glazed door leading to partially covered side access to front of property.

ADDITIONAL INFORMATION

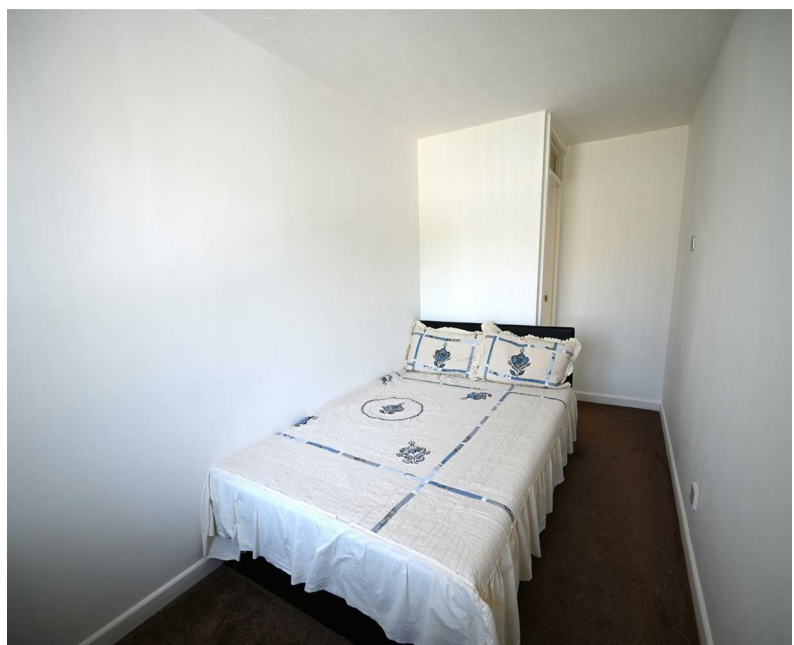
TENURE: FREEHOLD

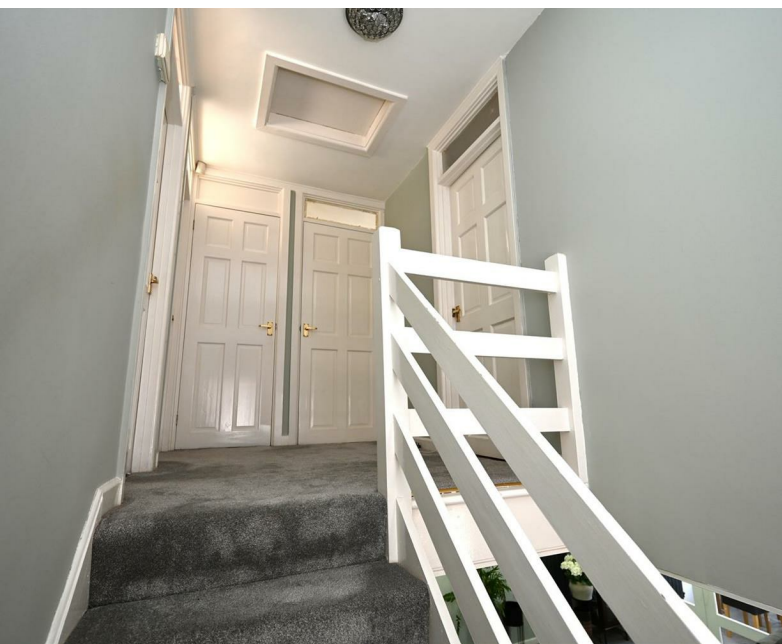
COUNCIL TAX BAND - D

The property is subject to a fee under the Calthorpe Estate Scheme of Management, which is currently £65.00 per year.

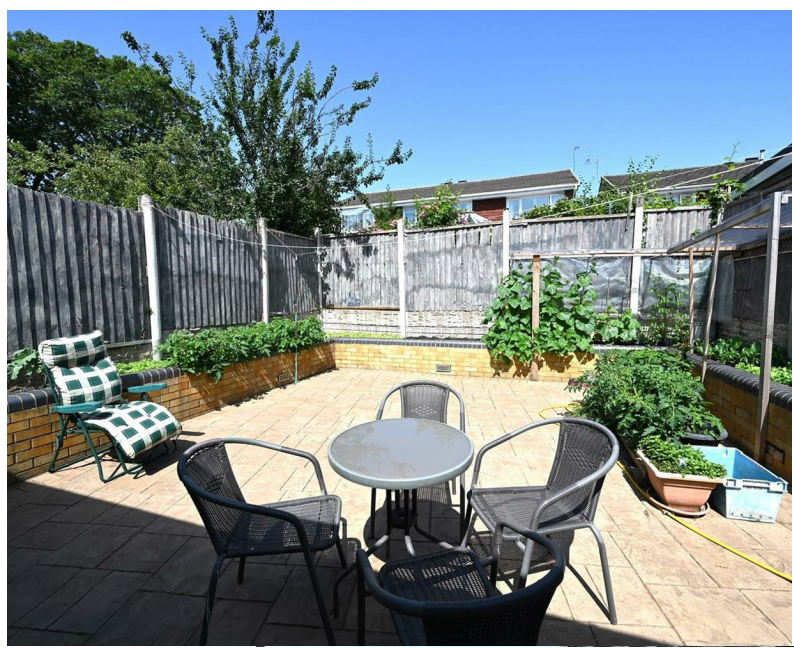
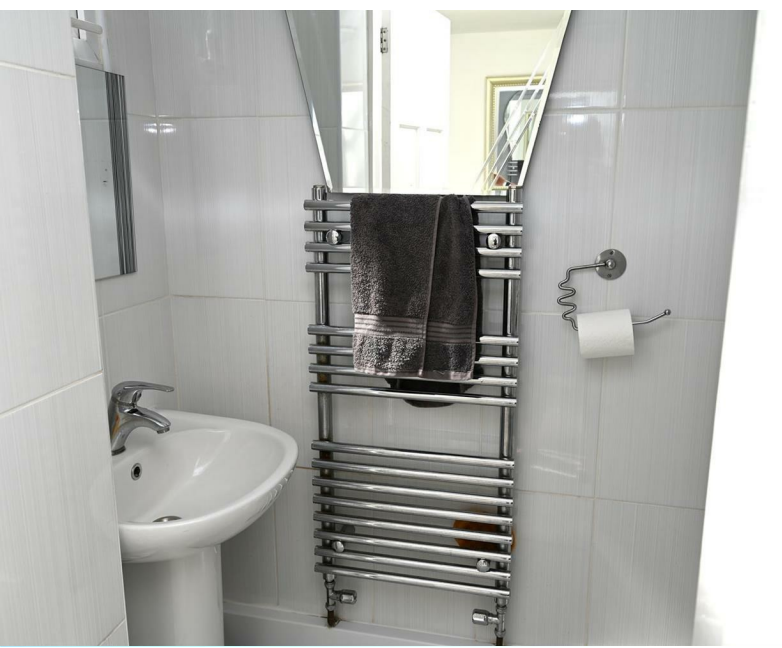


ENGLANDS





ENGLANDS

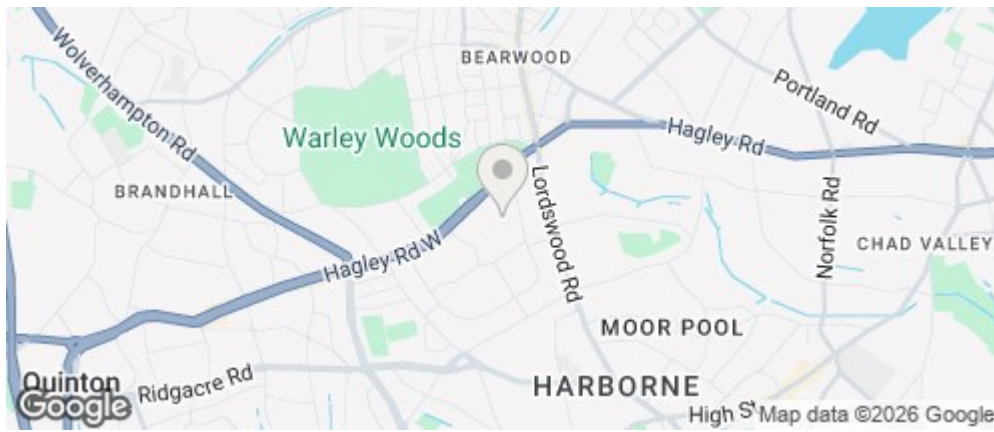





ENGLANDS



ROAD MAP



ENERGY EFFICIENCY GRAPH

Energy Efficiency Rating		Current	Potential
Very energy efficient - lower running costs			
(92 plus) A			
(81-91) B			
(69-80) C			
(55-68) D			
(39-54) E			
(21-38) F			
(1-20) G			
Not energy efficient - higher running costs			
England & Wales		EU Directive 2002/91/EC 	

FLOOR PLAN



DISCLAIMER NOTICES

“The agent has not tested any apparatus, equipment, fixture, fittings or services, and so does not verify they are in working order, fit for their purpose, or within ownership of the sellers, therefore the buyer must assume the information given is incorrect. Neither has the agent checked the legal documentation to verify legal status of the property or the validity of any guarantee. A buyer must assume the information is incorrect, until it has been verified by their own solicitors. The measurements supplied are for general guidance, and as such, must be considered as incorrect. A buyer is advised to re-check the measurements themselves before committing themselves to any expense. Nothing concerning the type of construction, or condition of the structure is to be implied from the photograph of the property. The sales particulars may change in the course of time, and any interested party is advised to make final inspection of the property prior to exchange of contracts.”

Misrepresentation Act 1967

“These details are prepared as a general guide only and should not be relied upon as a basis to enter into a legal contract, or to commit expenditure. An interested party should consult their own surveyor, solicitor or other professional before committing themselves to any expenditure or other legal commitments. If any interested party wishes to rely upon any information from the agent, then a request should be made, and specific written confirmation can be provided. The agents will not be responsible for any verbal statement made by any member of staff, as only a specific written confirmation should be relied upon. The agent will not be responsible for any loss other than when specific written confirmation has been requested.”

These particulars, whilst believed to be accurate are set out as a general outline only for guidance and do not constitute any part of an offer or contract. Intending purchasers should not rely on them as statements of representation of fact, but must satisfy themselves by inspection or otherwise as to their accuracy. No person in this firm's employment has the authority to make or give any representation or warranty in respect of the property.