



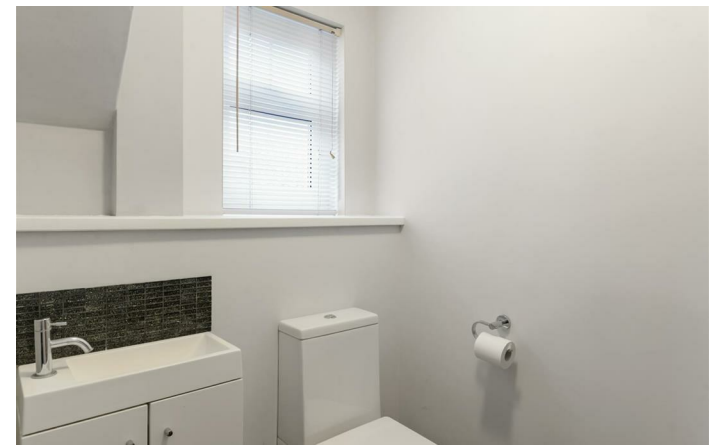
Hazel Avenue
Maidstone ME16 0BA
£475,000

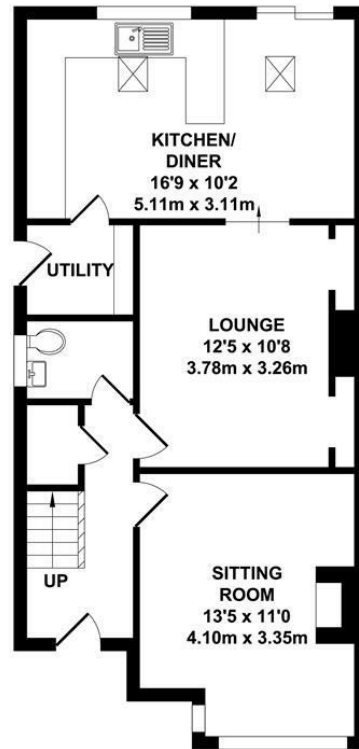


COUNTRY HOMES

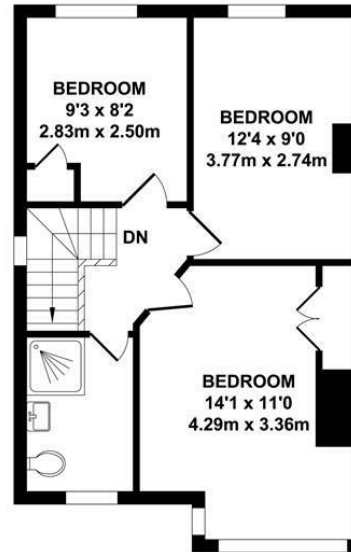
Maidstone ME16 0BA

SOLD SSTC PRIOR TO ONLINE MARKETING

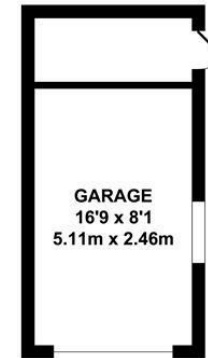




GROUND FLOOR
APPROX. FLOOR AREA
578 SQ.FT.
(53.71 SQ.M.)



FIRST FLOOR
APPROX. FLOOR AREA
425 SQ.FT.
(39.52 SQ.M.)

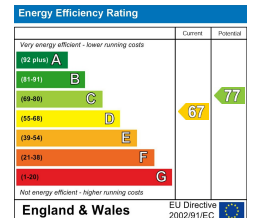


OUTBUILDING
APPROX. FLOOR AREA
135 SQ.FT.
(12.57 SQ.M.)

TOTAL APPROX. FLOOR AREA 1139 SQ.FT. (105.8 SQ.M.)

Whilst every attempt has been made to ensure the accuracy of the floor plan contained here, measurements of doors, windows, rooms and any other items are approximate and no responsibility is taken for any error, omission or mis-statement. This plan is for illustrative purposes only and should be used as such by any prospective purchaser. The services, systems and appliances shown have not been tested and no guarantee as to their operability or efficiency can be given.

Zome Media ©2026







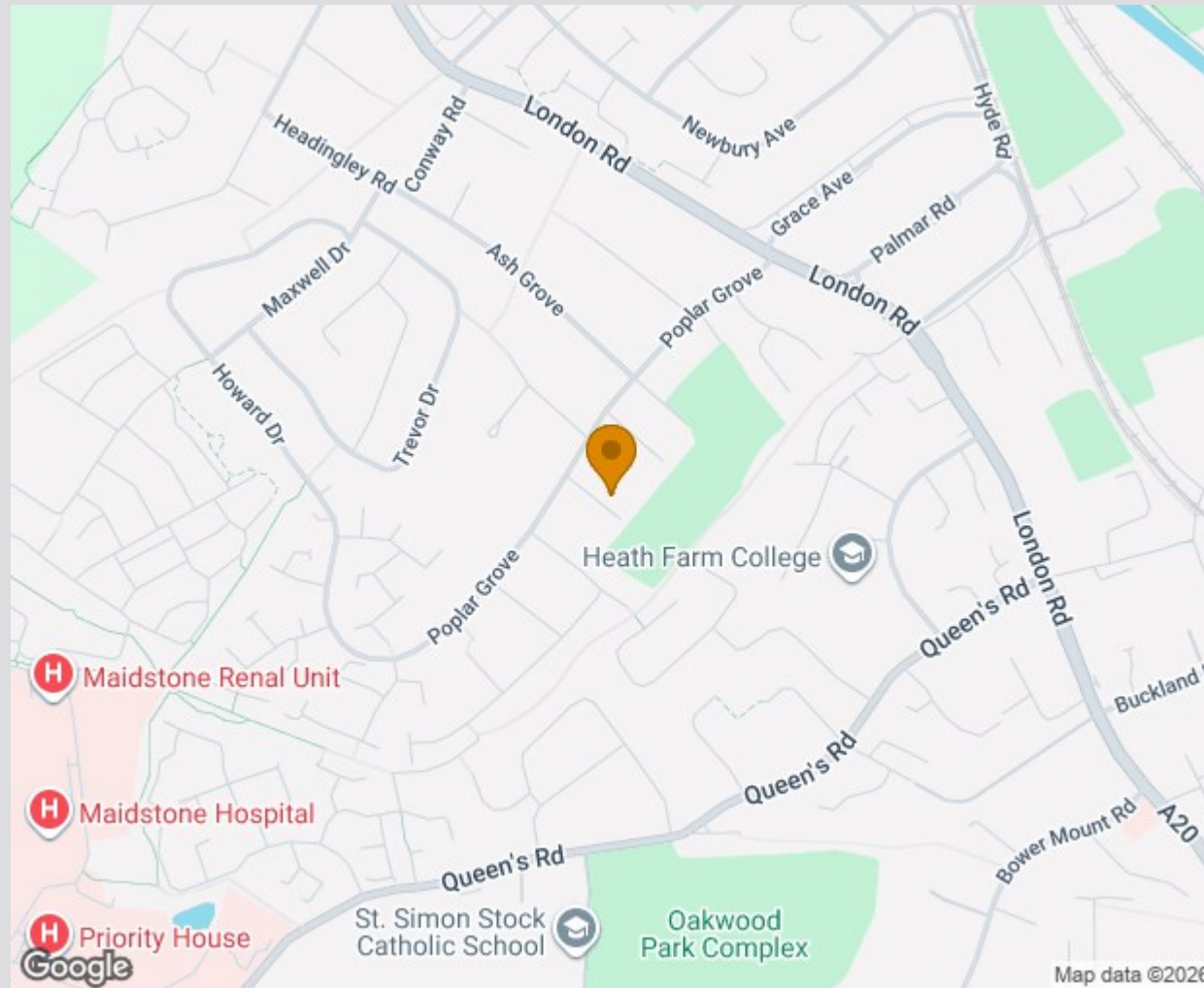
Location Map

Tenure: Freehold

Council tax band: D

Anti Money Laundering Charges

By law, we are required to conduct anti-money laundering checks on all potential buyers and sellers, and we take this responsibility very seriously. In line with HMRC guidelines, our trusted partner, Coadjute, will securely manage these checks on our behalf. Once an offer is accepted (subject to contract), Coadjute will send a secure link for you to complete the biometric checks electronically. A non-refundable fee of £45 + VAT per person will apply for these checks, and Coadjute will handle the payment for this service. These anti-money laundering checks must be completed before the property can be removed from the open market and advertised as 'sold subject to contract' and before we can send the memorandum of sale to the solicitors to confirm the sale. Please contact the office if you have any questions in relation to this.



TO VIEW CONTACT: 01622 94 22 22 allington@khp.me

www.khp.me



Zoopla.co.uk
Smarter property search

