



Connells

Swallow Road
Ipswich



Property Description

Situated within a popular and well-established residential area of Ipswich, Connells are pleased to offer this well established three-bedroom mid-terraced property. The accommodation offers well-balanced living space throughout, comprising an inviting entrance hall, comfortable living room, alongside a fitted kitchen with ample storage and workspace. Upstairs, the property benefits from three well-proportioned bedrooms and a family bathroom situated on the first floor. Externally, the home enjoys both front and rear gardens, providing useful outdoor space and communal parking.

The location is popular with families, first-time buyers, and commuters due to its excellent connectivity and community feel. The property is within easy reach of local shops, supermarkets, schools, and healthcare services, while Ipswich town centre offers an extensive selection of retail, leisure, and dining options. Nearby parks and green spaces provide opportunities for outdoor recreation and family activities. For commuters, the area benefits from good transport links, including access to the A12 and A14, connecting to Colchester, Bury St Edmunds, and further afield. Ipswich railway station is also easily accessible, providing regular rail services to London Liverpool Street and other major destinations.

Entrance

Accessed via double glazed entrance door with double glazed window to front, radiator and stairs rising to the first floor and doors giving access to:

Lounge

Double glazed window to rear, radiator and gas fire.

Kitchen

Double glazed door and window to rear, cooker point, space for fridge freezer, radiator and selection of wall and base level units.

First Floor Accommodation

Landing

Doors giving access to:

Bedroom One

Double glazed window to rear and radiator.

Bedroom Two

Double glazed window to rear, radiator, cupboard with baxi boiler.

Bedroom Three

Double glazed window to front and radiator.

Bathroom

Double glazed window to front and comprises of panel bath, pedestal wash hand basin, radiator and airing cupboard.

W/C

Double glazed window to front, low-level, w/c and radiator.

Front Garden

To the front of the property is laid to lawn with a private front.

Rear Garden

Accessed via tunnel to the side access. The rear garden is mainly laid to lawn with fencing to boundaries at approximately 50 ft in length with brick built outbuilding.

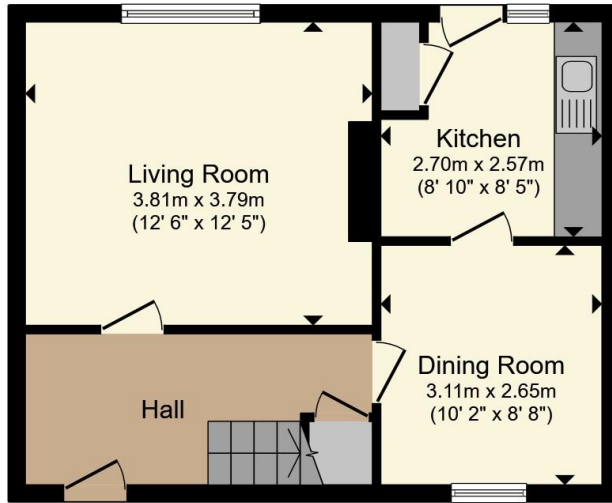
Outside

There is communal parking to the front.

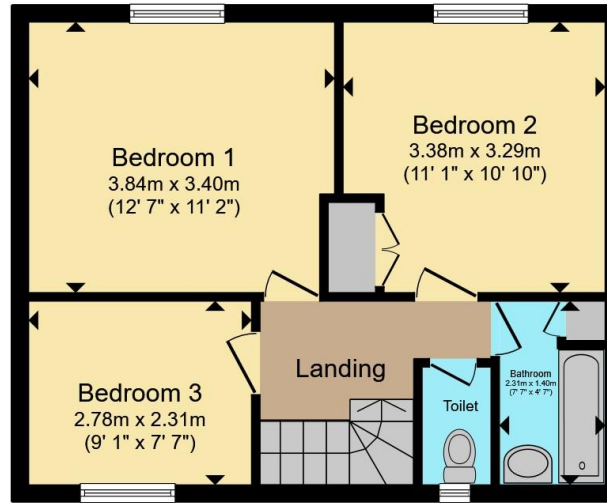
Agent Note

The vendor has advised us that the gas boiler comes with a 10 guarantee with 4 years left to run





Ground Floor



First Floor



Total floor area 84.0 m² (904 sq.ft.) approx

This floor plan is for illustrative purposes only. It is not drawn to scale. Any measurements, floor areas (including any total floor area), openings and orientation are approximate. No details are guaranteed, they cannot be relied upon for any purpose and they do not form part of any agreement. No liability is taken for any error, omission or misstatement. A party must rely upon its own inspection(s). Powered by www.propertybox.io



To view this property please contact Connells on

T 01473 233 966
E ipswich@connells.co.uk

6 Princes Street
IPSWICH IP1 1QT

EPC Rating: Council Tax
Awaited Band: B

view this property online connells.co.uk/Property/ICH308335

Tenure: Freehold



1. MONEY LAUNDERING REGULATIONS Intending purchasers will be asked to produce identification documentation at a later stage and we would ask for your co-operation in order that there will be no delay in agreeing the sale. 2. These particulars do not constitute part or all of an offer or contract. 3. The measurements indicated are supplied for guidance only and as such must be considered incorrect. Potential buyers are advised to recheck measurements before committing to any expense. 4. We have not tested any apparatus, equipment, fixtures, fittings or services and it is in the buyers interest to check the working condition of any appliances.

Connells Residential is registered in England and Wales under company number 1489613, Registered Office is Cumbria House, 16-20 Hockliffe Street, Leighton Buzzard, Bedfordshire, LU7 1GN. VAT Registration Number is 500 2481 05.

See all our properties at www.connells.co.uk | www.rightmove.co.uk | www.zoopla.co.uk

Property Ref: ICH308335 - 0007