



Lansdowne Drive, E8

£900,000

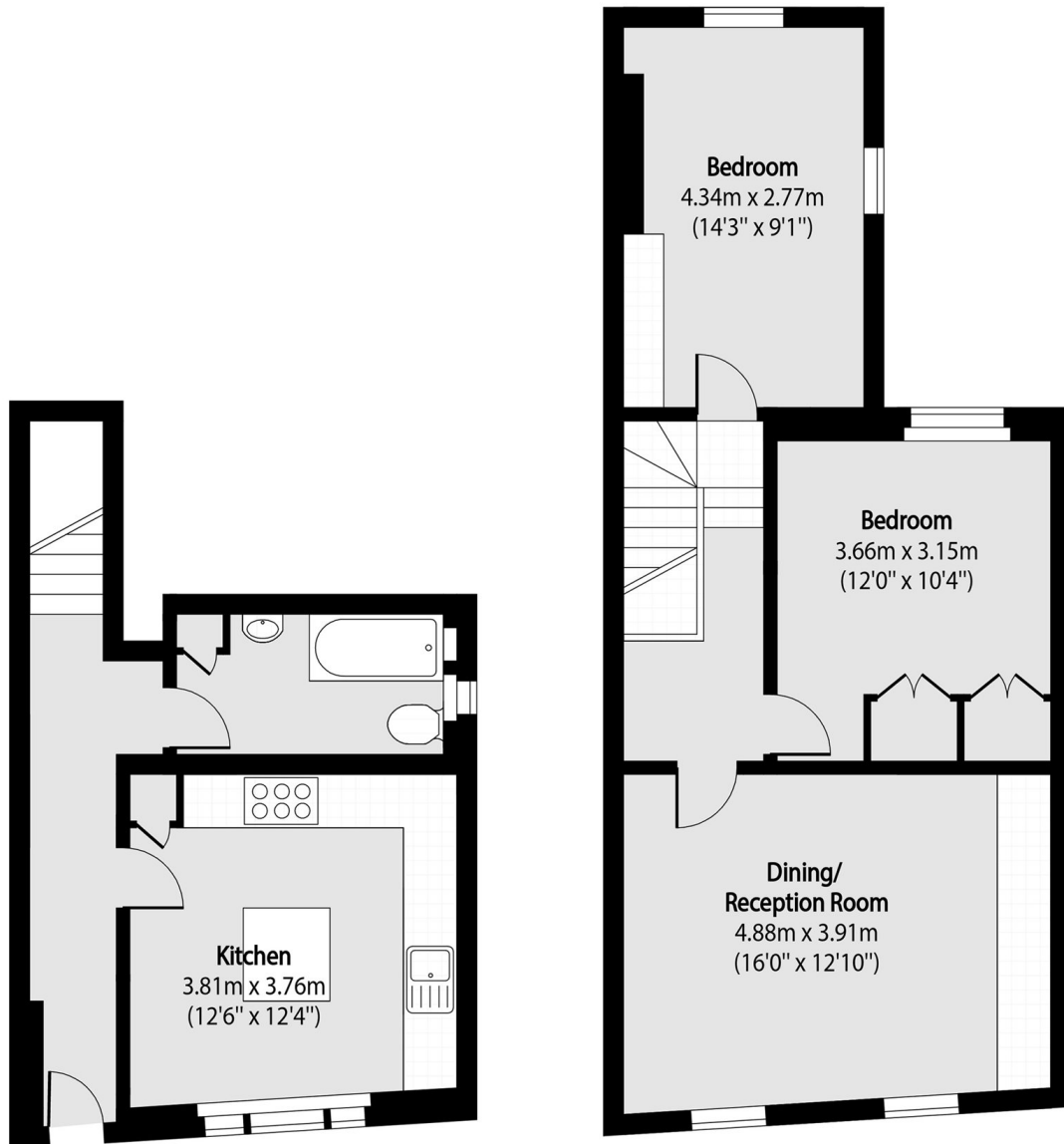
A beautiful two bedroom maisonette opposite London Fields. This property has been fully refurbished offering a social/ eat-in kitchen, sash windows throughout and spread over the ground and first floor.

Amazing location opposite London Fields Park and a short walk away from Broadway Market for all locals shops, bars and restaurants. London Fields overground station is also less than half a mile away for easy access to the city.

Features

- Chain Free
- Own Front Door
- Bespoke Storage
- Sash Windows
- Resident Street Parking

Lansdowne Drive, London, E8



Ground Floor

First Floor

Total area (approx): 77.85 sq m (838 sq. ft)