



Cornwall Gardens, Willesden Green

London NW10

£580,000



Cornwall Gardens

Willesden Green, London NW10

Outstanding three double bedroom duplex apartment of 969sq ft. Chain free and Share of Freehold.

Council Tax band: C

Tenure: Share of Freehold

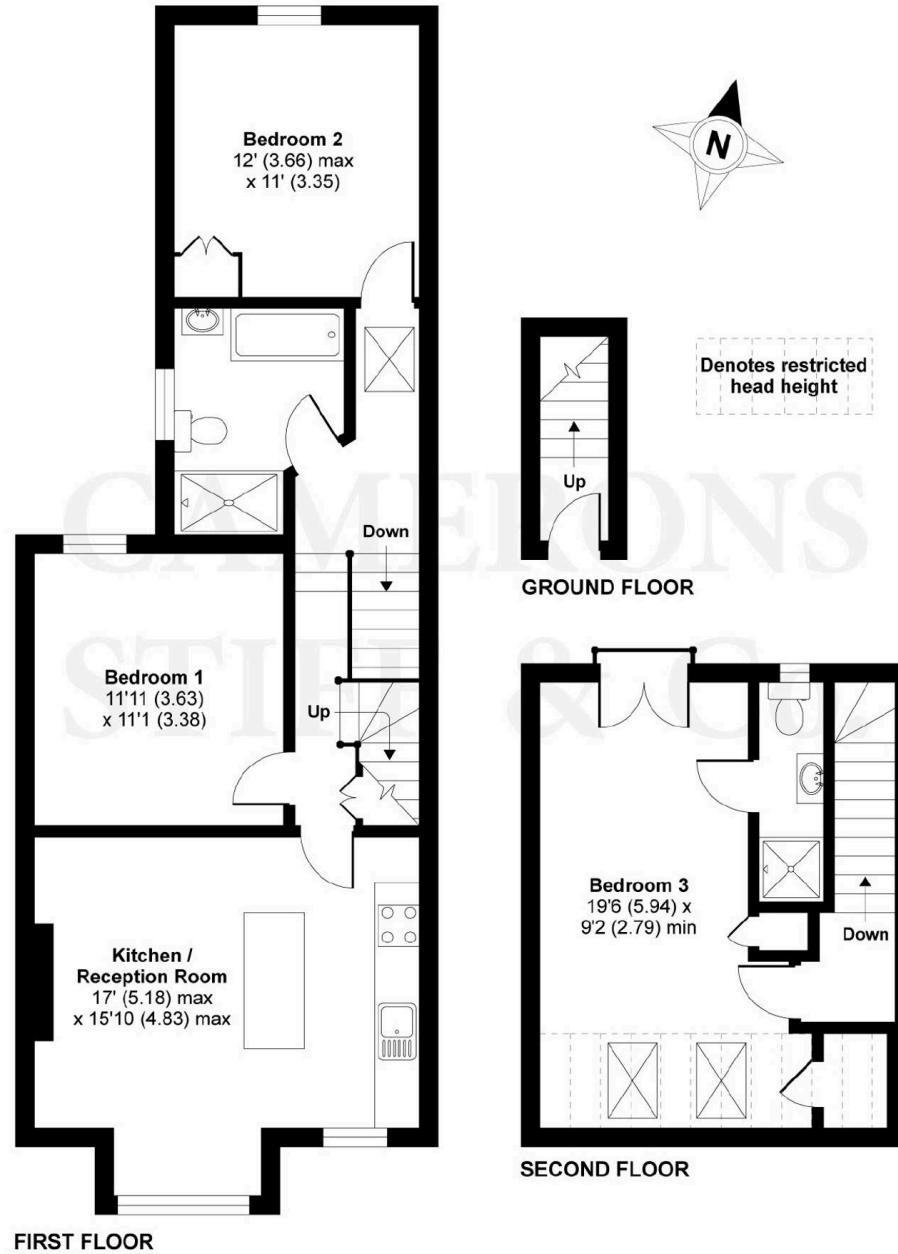
EPC Energy Efficiency Rating: E

EPC Environmental Impact Rating: E



Cornwall Gardens, London, NW10

APPROX. GROSS INTERNAL FLOOR AREA 969 SQ FT 90 SQ METRES (EXCLUDES RESTRICTED HEAD HEIGHT)



Whilst every attempt has been made to ensure the accuracy of the floor plan contained here, measurements of doors, windows and rooms are approximate and no responsibility is taken for any error, omission or misstatement. These plans are for representation purposes only as defined by RICS Code of Measuring Practice and should be used as such by any prospective purchaser. Specifically no guarantee is given on the total square footage of the property if quoted on this plan. Any figure given is for initial guidance only and should not be relied on as a basis of valuation.



Garrison Estates

20 College Parade, Salusbury Road, Queens Park - NW6 6RN

020 4511 4820 • contact@garrisonestates.co.uk • www.garrisonestates.co.uk/