



COMPASS CLOSE RUNCORN

WA7 6DL

Offers in the Region of
£160,000

NO CHAIN | FOUR BEDROOMS | END TERRACE | IDEAL FAMILY HOME OR INVESTMENT OPPORTUNITY

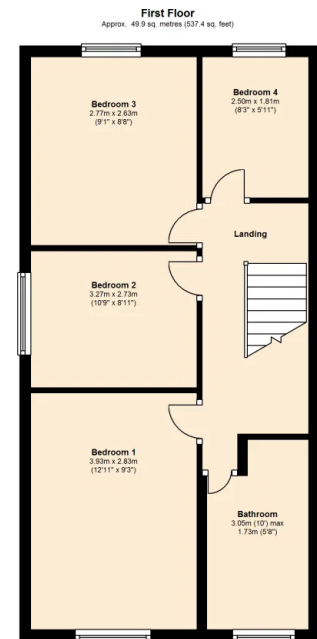
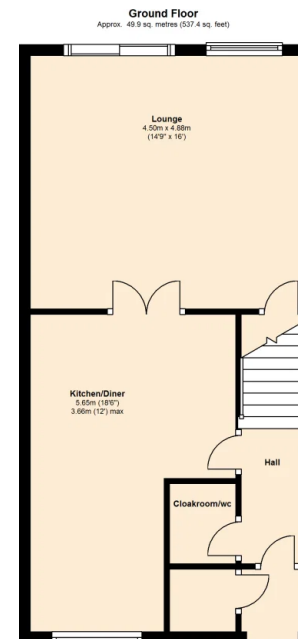
Situated within the popular residential area of Murdishaw, this spacious four-bedroom end-terrace property is offered to the market with the added benefit of no onward chain, making it an attractive proposition for buyers looking for a straightforward purchase. Whether you are a first-time buyer, growing family or investor seeking a property with excellent rental potential, this home offers fantastic value and versatile accommodation

The spacious lounge offers a bright and comfortable living environment with ample space for a range of furniture, making it ideal for both everyday family life and entertaining guests.

Compass Close is conveniently located within easy reach of local amenities including shops, supermarkets, schools and leisure facilities. Excellent transport links are nearby, with easy access to Runcorn East railway station, major road networks and commuter routes connecting Liverpool, Manchester, Chester and Warrington.

For investors, the property offers strong rental appeal due to its generous accommodation, four-bedroom layout and convenient location. For owner-occupiers, it presents an excellent opportunity to acquire a spacious family home with the potential to personalise and add value over time.

Early viewing is highly recommended to fully appreciate the size, potential and value this property has to offer.



Total area: approx. 99.9 sq. metres (1074.9 sq. feet)