



Howe Drive, Beaconsfield



Ashington Page



11 Howe Drive, Beaconsfield

A striking and substantially extended family home of approaching 3500 sq ft in a wide west facing plot of about 0.32 acres. Potential to create an Annex, subject to all necessary planning consents. 20 minute walk to the train station. Entrance porch with coats cupboard leading to the entrance hall and cloakroom. The Living Room has an attractive bay window, is triple aspect with bi-folding doors and has a gas log effect fire. The Music Room also has bi-folding doors and along one wall are fitted cabinets with shelving and cupboards.

There is a study and the heart of this property is the impressive Kitchen/Dining/Family space, measuring 27'4 x 24'6 with 2 sets of bi-folding doors that lead onto the wide patio and rear garden and with a roof lantern – lots of natural light. Featuring a rounded design of high quality angled and curved units, many with 180 degree hinges, under unit lighting, extensive Silestone worktops which are also rounded, drawers, peninsular island with wine rack, breakfast seating bar and cupboards. Double bowl sink unit with InSinkErator waste disposal, Bosch appliances including 2 ovens and 2 microwaves, twin tall integrated fridges with freezer compartments below, 4 burner induction hob with stainless steel extractor canopy above, 2 pull out larder units, Neff integrated dishwasher, cupboard housing Johnson & Starley Gas fired warm boiler.

The Family Room is a good size as is the Utility Room which has an excellent range of cupboards and drawers, worksurfaces, sink unit, space a plumbing for a slim dishwasher and a washing machine and space for a tumble dryer. Tall double household cupboard with a matching unit that houses the Worcester gas fired boiler and Megaflo hot water cylinder – this boiler provides under floor heating to the whole kitchen area, the utility and the shower room and serves the other rooms that have radiators. Very useful Shower Room with Duravit fittings.





On the first floor The Principal Bedroom has a Dressing Area with a good range of fitted wardrobes and shelving with more wardrobes and drawers in the bedroom area and there is a large full en suite bathroom with a curved bath and a wide separate shower cubicle with a rain shower head and hose.

The Guest Bedroom has a good range of fitted bedroom furniture including wardrobes, drawers and dressing tables and also has its own full en suite bathroom with a wide separate shower cubicle.

Both of the other bedrooms are doubles and have built in wardrobes and are served by the shower room.

Outside the gravel driveway has hardstanding for about 6 cars. To the rear there is a full width paved patio with a decking area at one end and adjacent is a covered area with a fish pond and its filtration unit.

There is a large lawned area with mature shrubs and trees. Both sides have access to the front. There are 2 storage sheds measuring approx 6' x 5'6.

The Double Garage has an automatic up and over door, has gym style flooring, light and power, a radiator and a skylight – used currently as a hobbies room for which it is ideal.

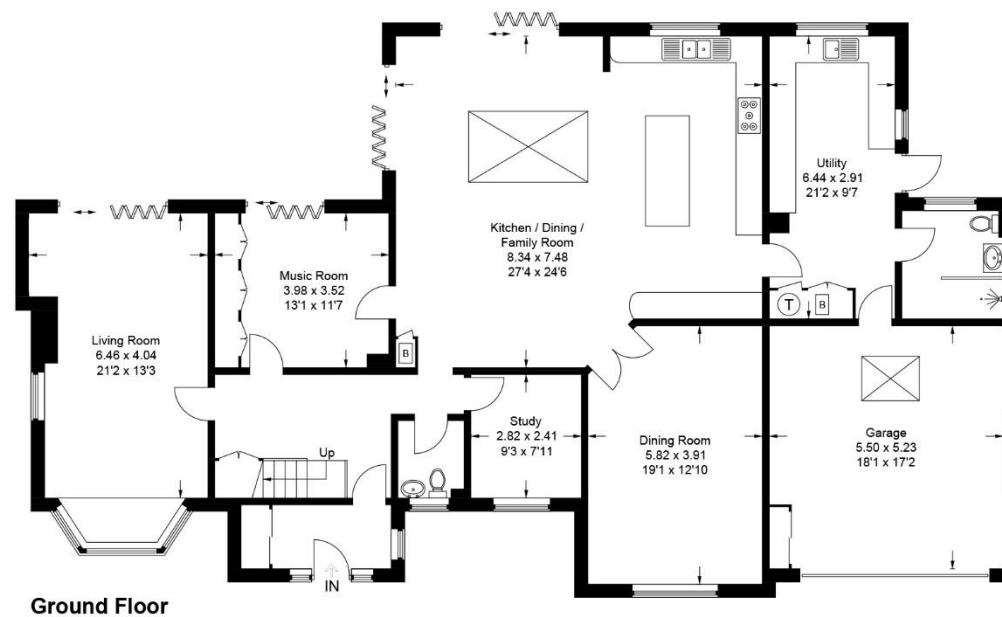
Tenure: Freehold

EPC: C

Council Tax Band: G



Approximate Gross Internal Area
Ground Floor = 209.5 sq m / 2,255 sq ft
First Floor = 113.6 sq m / 1,223 sq ft
Total = 323.1 sq m / 3,478 sq ft
(Including Garage)



This plan is for layout guidance only. Not drawn to scale unless stated. Windows and door openings are approximate. Whilst every care is taken in the preparation of this plan, please check all dimensions, shapes and compass bearings before making any decisions reliant upon them.





For an appointment to view this property, please contact us on:

01494 680 018

info@ashingtonpage.co.uk



Should you decide to use one of our recommended mortgage advisors, you should know that we would normally receive a referral fee on completion of a transaction. An average referral fee is typically £325

Important Notice: These particulars are for guidance only. They are prepared and issued in good faith and are intended to give a fair summary of the property. Any description or information should not be relied on as a statement or representation of fact or that the property or its services are in good condition. The photographs show only certain parts of the property at the time they were taken. Any areas, measurements or distance given are approximate only. Any reference to alterations to or use of, any part of the property is not a statement that any necessary planning, building regulations or other consent has been obtained. These matters must be verified by an intending purchaser. All statements contained in these particulars in relation to the property are made without responsibility of Ashington page or its clients. Neither Ashington Page (nor any joint agents) nor any of their employees has any authority to make or give any representation or warranty whatsoever in relation to the property.

www.AshingtonPage.co.uk

Ashington Page