



Balham High Road, SW17

£295,000

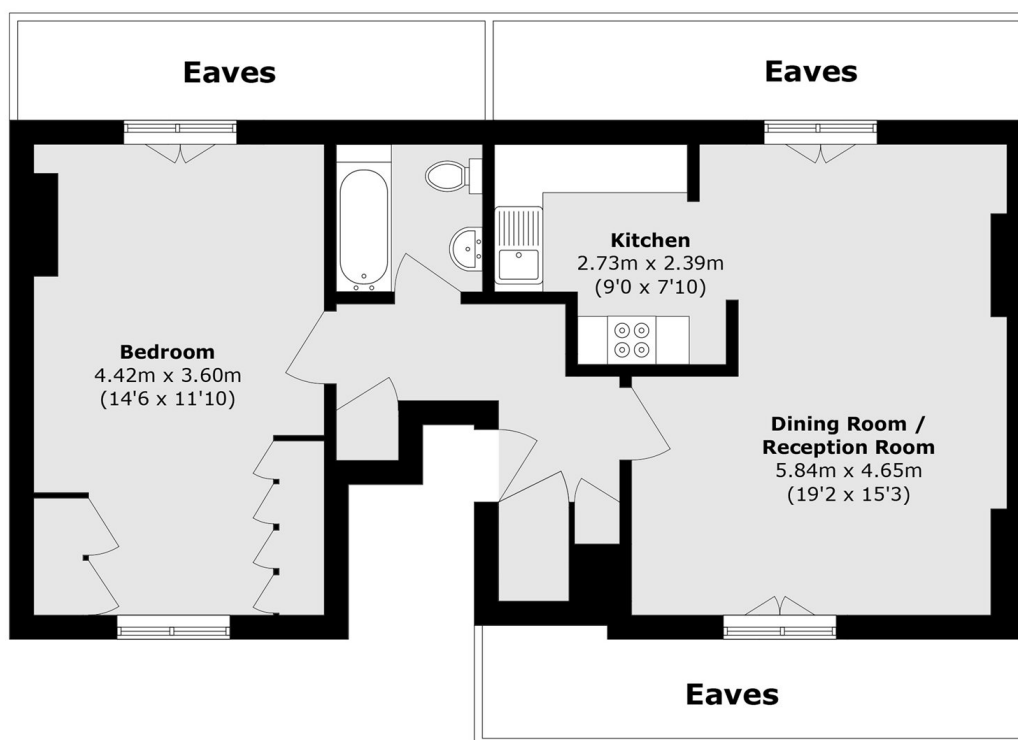
A staggering and well positioned one double bedroom apartment in a central location spanning to just shy of 700 sqft. The property opens onto a large reception room with an integral kitchen, a large double bedroom and a three piece bathroom. The property is sold chain free. *CGI Imagery

Conveniently located, the property is on the doorstep of both Balham and Tooting town centre with the many shops, bars and restaurants in great proximity. The vast green open spaces of Tooting Bec Common and Tooting Bec Underground station are a stones throw away.

Features

- One Double Bedroom
- 699 Sq'ft
- Chain Free
- Desirable Location
- Top Floor Apartment
- Blank Canvas

Balham High Road, London, SW17



Total area (approx.): 65.0 sq. m (699.6 sq. ft)
Excluding Eaves