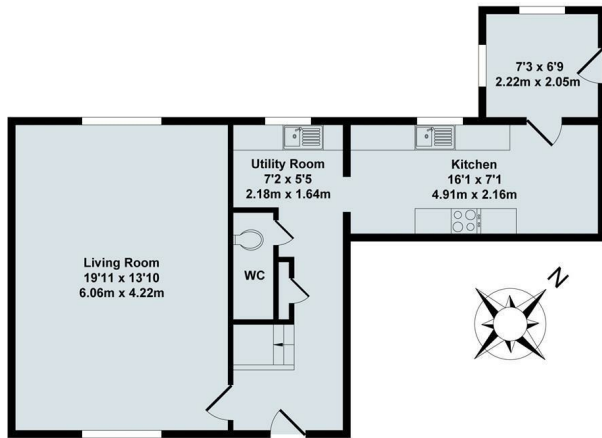




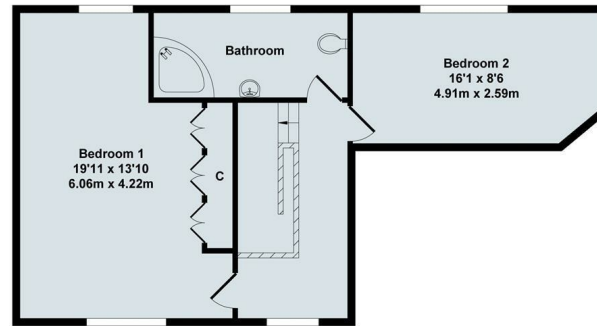
Gooseacre Farm Cottage Thrupp Lane, Radley, Abingdon, OX14

£1,950 Per Month - 12th May 2026.

- Refurbished 2 bedroom cottage with stunning views across open farmland
- Large spacious double aspect reception room
- Kitchen, Boot room, Utility room
- LPG central heating and Water is included as part of the rental -Excludes electric and council tax.
- Front garden and small rear courtyard area
- Parking
- Double glazing
- 1155 sq. ft
- EPC Rating: E
- Council Tax Band: C



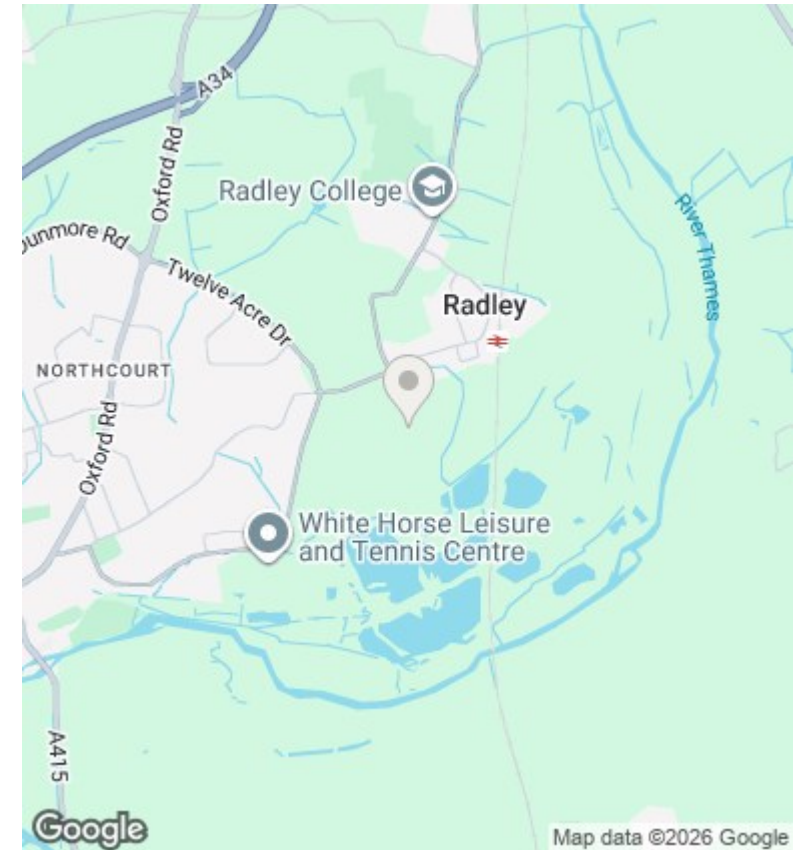
Ground Floor



First Floor

Total Approx. Floor Area 1155 Sq.Ft. (107.30 Sq.M.)

All items illustrated on this plan are included in the "Total Approx Floor Area"



Directions

Viewings

Viewings by arrangement only. Call 01235 554950 to make an appointment.

Council Tax Band

C

EPC Rating:

E

Energy Efficiency Rating		
	Current	Potential
<i>Very energy efficient - lower running costs</i>		
(92 plus) A		
(81-91) B		
(69-80) C		
(55-68) D		
(39-54) E	52	63
(21-38) F		
(1-20) G		
<i>Not energy efficient - higher running costs</i>		
England & Wales	EU Directive 2002/91/EC	