



Cole Hall Lane, Birmingham B33 9NS



welcome to

Cole Hall Lane, Birmingham

END OF TERRACEBEAUTIFULLY PRESENTED*** REFITTED KITCHEN***THREE DOUBLE BEDROOMS INCLUDING GROUND FLOOR ROOM WITH EN SUITE*** MODERN FAMILY BATHROOM *** TWO DOUBLE BEDROOMS TO FIRST FLOOR*** LARGE REAR GARDEN** MUST BE VIEWED***



Bedroom 3 Ground Floor Ensuite

Double-glazed window to rear, radiator and ceiling light point.

Lounge

Ceiling light point, double-glazed window to front, herringbone laminate flooring, understairs cupboard housing boiler and spotlights.

Kitchen

Integrated oven, gas hob with extractor fan over, composite sink with drainer and stainless-steel mixer tap, plumbing for washing machine, wall, drawer and base units, tiled floor, spotlights, radiator and double-glazed window to side.

Downstairs Bathroom

Tiled floor and splash zones, shower cubicle with mains shower, radiator, ceiling light point, vanity unit with wash basin and low level w.c.

Landing

Loft access, double-glazed window to side, door to bedrooms one and two and bathroom.

Bedroom One

Ceiling light point, radiator, double-glazed window to front.

Bedroom Two

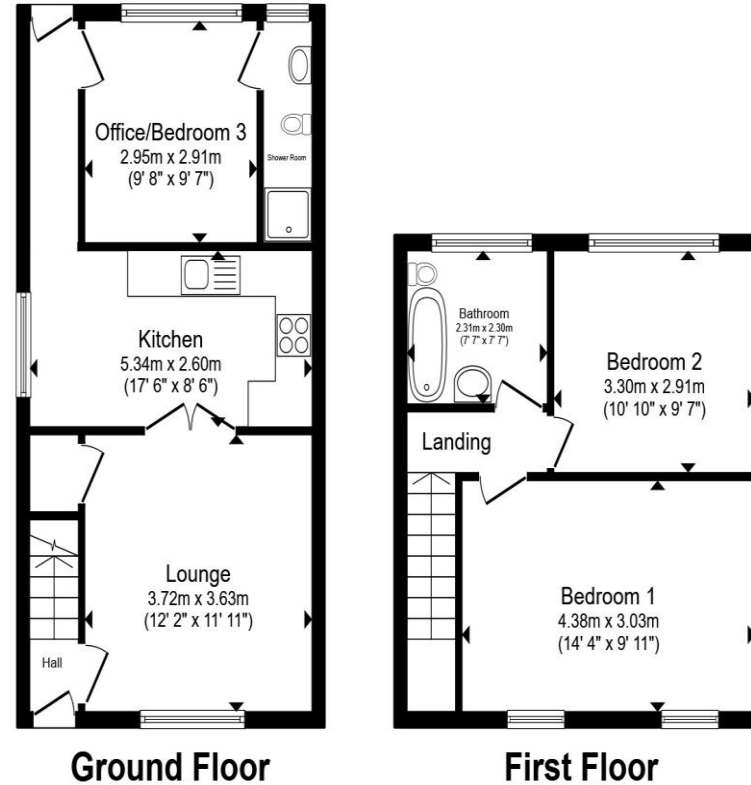
Radiator, ceiling light point, double-glazed window to rear.

Bathroom

Spotlights, P-shaped bath with mains shower over, radiator, low level w.c., vanity unit with hand wash basin, tiled splash zones and double-glazed obscured window to rear.

Rear Garden

Laid to lawn, patio area, shrub borders, enclosed to neighbouring boundaries.



Total floor area 76.2 m² (821 sq.ft.) approx

This floor plan is for illustrative purposes only. It is not drawn to scale. Any measurements, floor areas (including any total floor area), openings and orientation are approximate. No details are guaranteed, they cannot be relied upon for any purpose and they do not form part of any agreement. No liability is taken for any error, omission or misstatement. A party must rely upon its own inspection(s). Powered by www.propertybox.io

 shipways



view this property online shipways.co.uk/Property/CAB112145



welcome to

Cole Hall Lane, Birmingham

- END OF TERRACE HOUSE
- BEAUTIFULLY PRESENTED
- THREE DOUBLE BEDROOMS INCLUDING GROUND FLOOR ROOM WITH EN SUITE
- WALK IN WARDROBE IN MASTER BEDROOM
- MODERN FAMILY BATHROOM

Tenure: Freehold EPC Rating: C

Council Tax Band: A

offers over

£240,000



Please note the marker reflects the postcode not the actual property

view this property online shipways.co.uk/Property/CAB112145



Property Ref:
CAB112145 - 0006

1. MONEY LAUNDERING REGULATIONS Intending purchasers will be asked to produce identification documentation at a later stage and we would ask for your co-operation in order that there is no delay in agreeing the sale. 2. These particulars do not constitute part or all of an offer or contract. 3. The measurements indicated are supplied for guidance only and as such must be considered incorrect. Potential buyers are advised to recheck measurements before committing to any expense. 4. We have not tested any apparatus, equipment, fixtures or services and it is in the buyers interest to check the working condition of any appliances. 5. Where an EPC, or a Home Report (Scotland only) is held for this property, it is available for inspection at the branch by appointment. If you require a printed version of a Home Report, you will need to pay a reasonable production charge reflecting printing and other costs. 6. We are not able to offer an opinion either written or verbal on the content of these reports and this must be obtained from your legal representative. 7. Whilst we take care in preparing these reports, a buyer should ensure that his/her legal representative confirms as soon as possible all matters relating to title including the extent and boundaries of the property and other important matters before exchange of contracts.

Shipways is a trading name of Sequence (UK) Limited which is registered in England and Wales under company number 4268443, Registered Office is Cumbria House, 16-20 Hockliffe Street, Leighton Buzzard, Bedfordshire, LU7 1GN. VAT Registration Number is 500 2481 05.


shipways



0121 747 4722



castlebromwich@shipways.co.uk



258 Chester Road, Castle Bromwich,
BIRMINGHAM, West Midlands, B36 0JE



shipways.co.uk