

## Larch Road, NW2

£600,000

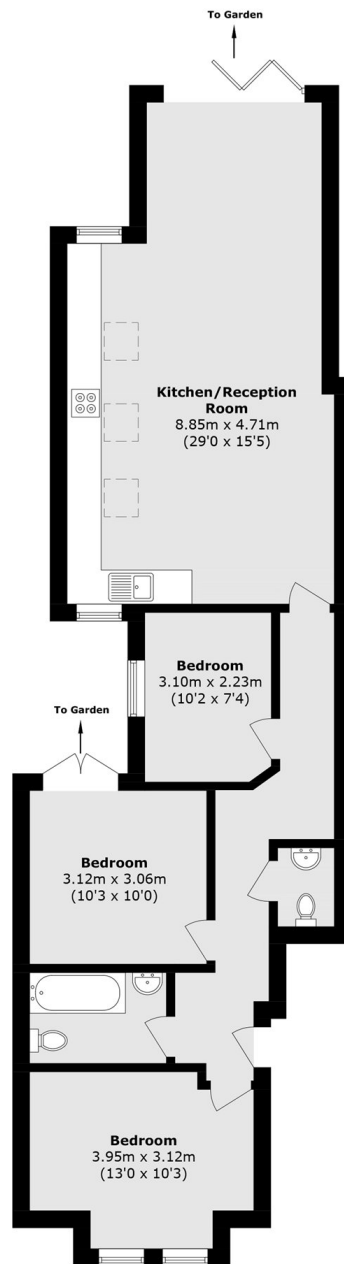
A brand new three bedroom ground floor garden flat which is a period conversion. Comprising three bedrooms, an open plan living and kitchen area, a bathroom and a private garden. The property comes with a share of freehold and is being offered chain free.

Larch Road is conveniently located close to the ever popular Gladstone Park, as well as Cricklewood station (Thameslink) and Willesden Green underground station (Jubilee line). Local amenities, outstanding schools and transport links are close by.

### Features

- Ground Floor Flat
- Brand New
- Three Bedrooms
- Open Plan Living Area
- Share Of Freehold
- Chain Free

# Larch Road, London, NW2



Total area (approx.): 82.5 sq. m (888 sq. ft)