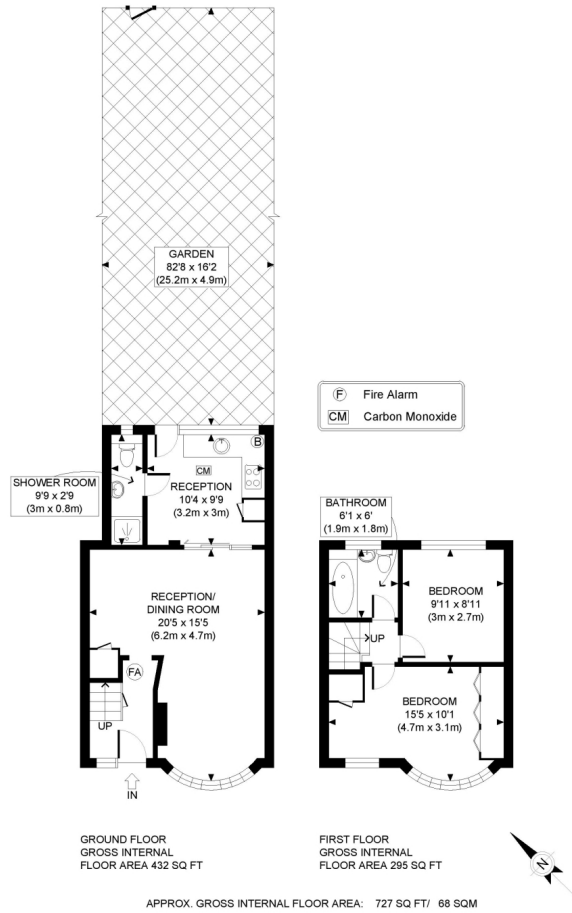


the floorplan...



more details from...

call: Rolitex Estates:0208 813 0777

email:info@rolitex.co.uk

web:info@rolitex.co.uk

Asking Price
£475,000

Cressage Close, Southall, UB1 2XP



**Two Double Bedrooms
Spacious Through Lounge
Fitted kitchen with garden access
Family bathroom additional WC
Large Private Rear Garden
Outhouse with Electricity and
Lighting**



Key Features:

- Two-bedroom terraced house
- Spacious through lounge
- Fitted kitchen with garden access
- Family bathroom additional WC
- Private rear garden with powered outhouse
- Outhouse with electricity and lighting
- Off-street parking
- Quiet cul-de-sac location
- Excellent transport links nearby
- Ideal for families or investors

Viewings highly recommended.

