



ELTRINGHAM STREET, SW18

£600,000

- Modern two bedroom apartment
- Private balcony
- Open plan living/kitchen
- Two bathrooms
- Allocated parking space
- Energy rating: TBC





## ABOUT THE HOME

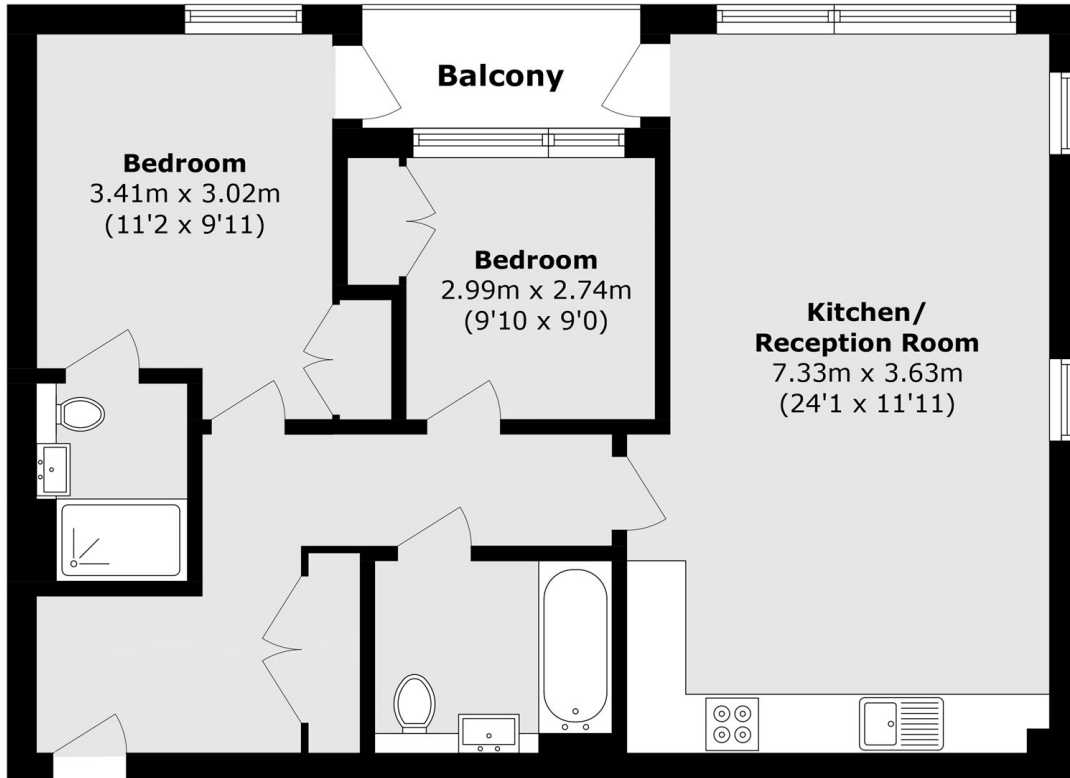
A well appointed, modern apartment with two double bedrooms, stylish bathroom and spacious open-plan living/kitchen room with a private balcony.

The apartment is beautifully presented and comprises of; a large hallway with useful built-in storage cupboards, a modern kitchen finished to a high standard opening to a reception room with ample space for dining and a private balcony which can also be accessed from one of the bedrooms. Both bedrooms are generous doubles and benefits from built in wardrobes; the principle bedroom boasts an en-suite bathroom and there is a separate contemporary family bathroom. In addition, the property offers underfloor heating throughout, an allocated underground parking space as well as secure bike storage.



Summerbee House is within the ever popular School Yard development. Positioned for easy access to Central London via Wandsworth Town Station and Clapham Junction. It is a short distance from the popular amenities of Wandsworth Town and Northcote Road.





Total area (approx.): 71.3 sq. m (767.4 sq. ft)

Balcony area (approx.): 4.3 sq. m (46.2 sq. ft)

#### JACKSONS WANDSWORTH

507 Old York Road, London,

SW18 1TF

Sales: 020 8875 8890

Lettings: 020 8875 8899

Energy Rating: We aim to make our particulars both accurate and reliable. However they are not guaranteed; nor do they form part of an offer or contract. If you require clarification on any points then please contact us, especially if you're traveling some distance to view. Please note that appliances and heating systems have not been tested and therefore no warranties can be given as to their good working order.