



## ST. JOHNS WOOD PARK

LONDON, NW8

£8,948 PER MONTH

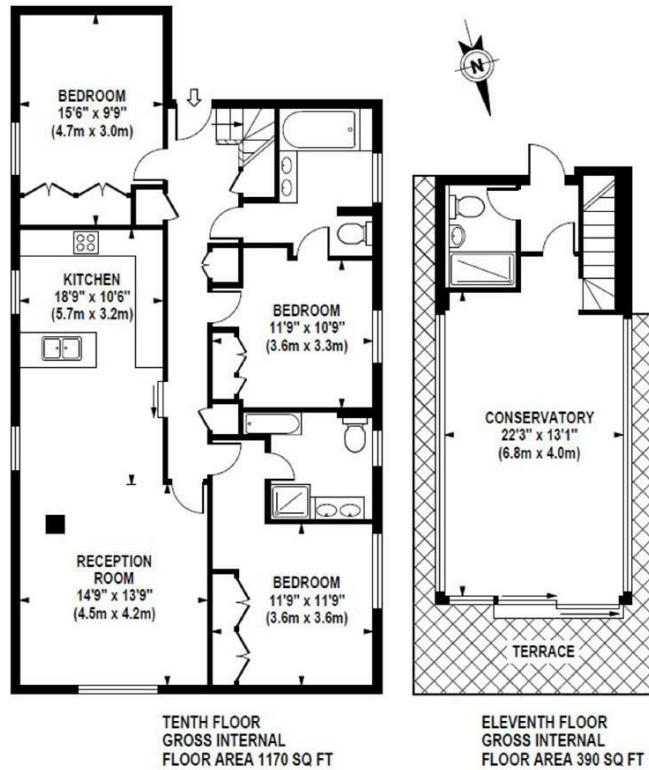
Newly refurbished, three bedroom/three bathroom penthouse apartment with bespoke design now available in a gated development a short walk from St Johns Wood and Swiss Cottage.

Boasting hard wood flooring, beautiful design, full air condition throughout, ample built in storage, Italian stone worktops, Bosch appliances, LED efficient lights, alarm and video entry phone.

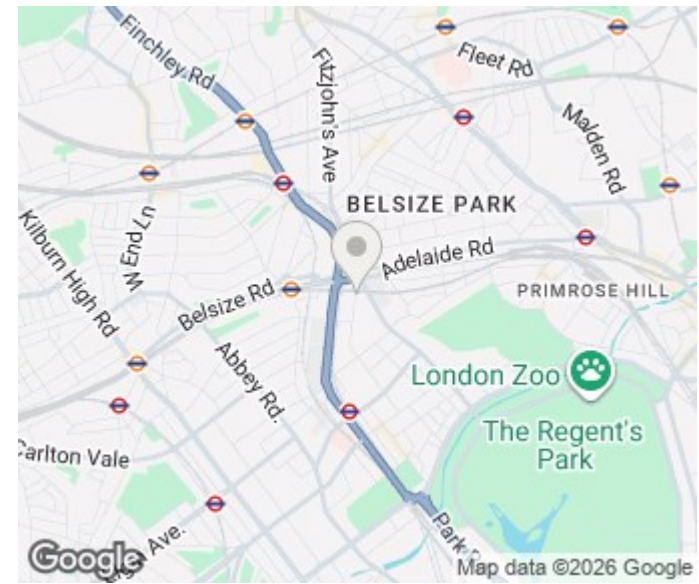
Boydell Court further boasts on-site 24 hour porter, secure off street parking, double glazing, alarm and video entry phone.

**PMP** | INTERNATIONAL

**BOYDELL COURT**  
Approximate Gross Internal Area 1560 sq ft / 144.9 sq m



Although every attempt has been made to ensure accuracy, all measurements are approximate. The floor plans for illustrative purposes only and not to scale. Measured in accordance to RICS standards.  
DE-PHOTOGRAPHY.NET



Energy Efficiency Rating		
	Current	Potential
Very energy efficient - lower running costs		
(92 plus) <b>A</b>		
(81-91) <b>B</b>		
(69-80) <b>C</b>	76	76
(55-68) <b>D</b>		
(39-54) <b>E</b>		
(21-38) <b>F</b>		
(1-20) <b>G</b>		
Not energy efficient - higher running costs		
<b>England &amp; Wales</b>	EU Directive 2002/91/EC	

Agents Note: Whilst every care has been taken to prepare these particulars, they are for guidance purposes only. All measurements are approximate and are for general guidance purposes only and whilst every care has been taken to ensure their accuracy, they should not be relied upon and potential buyers/tenants are advised to recheck the measurements

London  
PMP International  
94 Belsize Lane  
Belsize Park  
London  
NW3 5BE

020 7701 2878  
info@pmpi.co.uk  
www.pmpi.co.uk

**PMP** | INTERNATIONAL