



## Gorsuch Place, E2

£5,000 Per calendar month

This Spacious and furnished three-bedroom, two-bathroom apartment in the sought-after Shoreditch Exchange development.

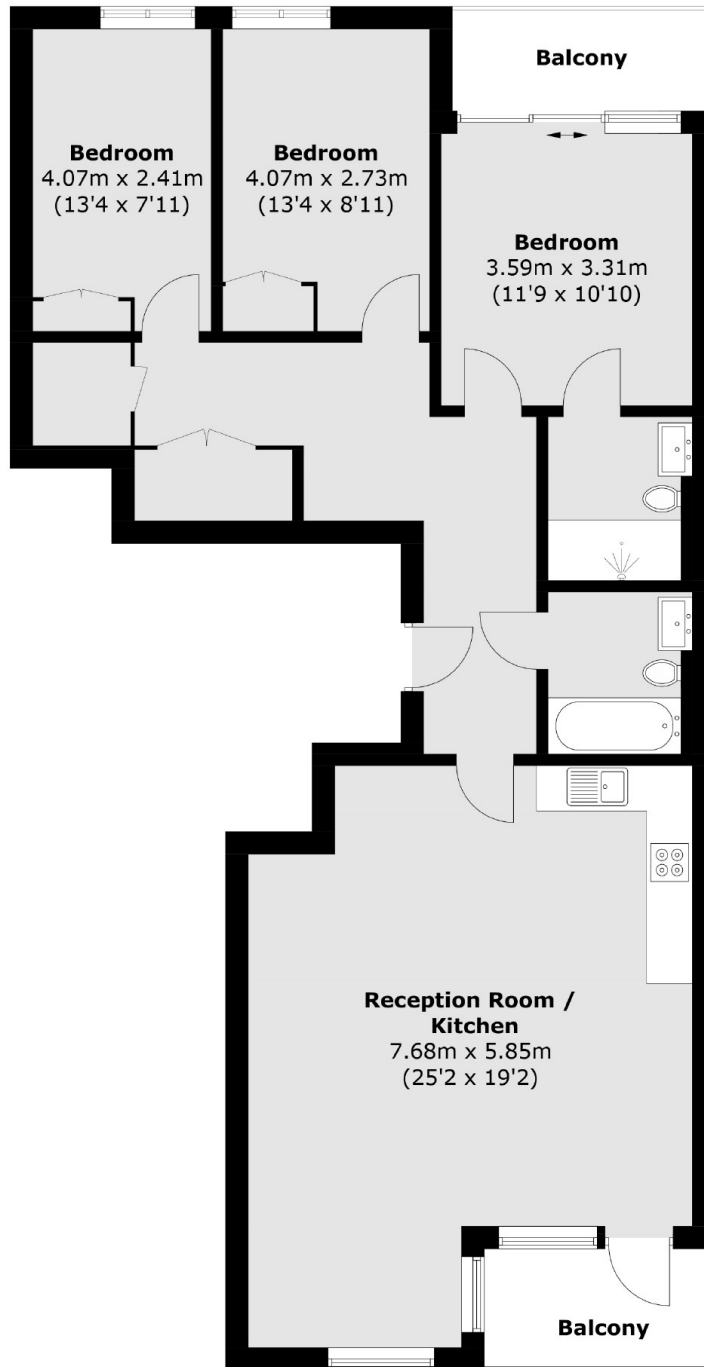
Designed with contemporary living in mind, the property boasts generous living space, brand-new appliances, and high-quality furnishings throughout. Residents of Shoreditch Exchange enjoy an impressive range of amenities, including a fully equipped gym, sauna, cinema room, library, rooftop terrace, and a concierge service all within one of East London's most vibrant and connected neighbourhoods.

Located just minutes from Shoreditch High Street station, with easy access to Liverpool Street, the City, and Old Street, this apartment offers the best of London living on your doorstep.

### Features

- Three Bedroom
- Two Bathroom
- Private Outside Spaces
- Modern development
- Furnished
- Amenities

Gorsuch Place,  
London, E2



Total area (approx.): 101.0 sq. m (1,087.2 sq. ft)  
Balcony: 9.2 sq. m (99.0 sq. ft)